

# **Perspectives on Facility Damage - 2009**

(Volume IX, Version -a-)

An annual report published by Colorado 811  
reviewing underground facility damages  
resulting from excavation activity.

- For Calendar Year 2009 -  
Covering Years 2001 - 2009 Facility Damages  
Including the 2009 County Damage Report Cards

Released August 11, 2010

This report may be referenced as the Colorado 811 2009 analysis on underground facility damage.  
A special thanks to Mr. Barry Miller with Foresight Advantage for preparing this report since 2001.

# Perspectives on Facility Damage - 2009

## INTRODUCTION

2010 marks the ninth year for publication of the Colorado underground facility damage report, *Perspectives on Facility Damage-2009*. Colorado 811 publishes the only comprehensive annual report in the nation that analyzes the root cause of all underground facility damage in a state. Colorado 811 is indebted to the member organizations that provide this valuable information.

Many of the Colorado underground facility owners/operators have consistently reported their excavation damage information since the 2001 reporting year. The current dataset spans nine years, contains detailed information on 80,672 separate facility damages and encompasses all facility types in nearly every county in Colorado. The decreasing trend since 2003 in the number and severity of facility damages in Colorado is evidence that shared responsibility, mutual cooperation and accurate information do make a difference.

**The large decrease in damages from 4,900 in 2008 to 3,192 in 2009, a 34.9% reduction in the number of facility damages, is attributable to a number of causes including:**

- 1) the continued slowing of the state and national economy (official US economic recession),
- 2) the reduction of residential construction activity in the state (annual permits down 50.8% from 2008),
- 3) the corresponding decrease in adjusted One-Call incoming ticket activity (down 14.1%), and
- 4) an increase in the efforts and more effective programs by a number of industry stakeholders to increase public awareness of One-Call (811) requirements and stakeholder damage prevention education.

Note: See Table-B on Page-8 for additional data and statistics.

The real decrease in damages attributable to the stakeholders' public awareness and damage prevention efforts in 2009 can be determined by subtracting the 34.9% decrease in damages from the 14.1% decrease in ticketing activity. By this method, continued stakeholder efforts have reduced damages by an additional 20.8% in 2009.

Colorado stakeholders reduced their all-facility damages per 1,000 incoming tickets from 18.0 in 2003 to 6.8 in 2009, a 62.4% decrease. At the same time, natural gas damages per 1,000 incoming tickets have decreased from 6.0 in 2003 to 1.6 in 2009, a 72.7% decrease. During these six years, incoming tickets decreased 37.3% while all-facility damages decreased 76.4%. By these measures, facility damages have decreased at over twice the rate of incoming tickets during a time when economic growth and residential construction activity also slowed. The influence of legislatively mandated damage reporting has had both an absolute and relative impact in improving public awareness and reducing facility damages in Colorado.

Colorado is the only U.S. state that has legislatively mandated the annual collection and reporting of comprehensive facility damage information by all facility owners/operators to the state One-Call center. This distinction provides Colorado facility owners/operators the ability to both understand the causes of facility damage and to implement targeted public awareness and industry educational activities. These activities are designed to increase requests by homeowners and professional excavators, promote safer excavation practices and to ultimately reduce facility damages. The cooperation of all industry stakeholders to facilitate the success of these actions ensures the delivery of vital utility services and creates a safer Colorado.

Colorado can take pride in its leadership role in damage prevention standards, practices, programs and bottom line results. We encourage the public and all involved in the damage prevention industry to maintain their efforts in the coming years. COLORADO 811 is always open to feedback and suggestions to improve the usefulness of the report. Please contact the COLORADO 811 Public Relations Administrator if you have any questions, need additional information or would like to arrange damage prevention education or support programs in your community.

Colorado 811  
16361 Table Mountain Parkway  
Golden, CO 80403

Phone: (303) 232-1991  
Web: [www.COLORADO811.org](http://www.COLORADO811.org)

# Perspectives on Facility Damage - 2009

## ABOUT THIS REPORT

Underground facility owners and operators in Colorado have submitted their damage data for analysis in this report as required by C.R.S. 9-1.5-103(7)(b). COLORADO 811 has collected and summarized the data and published this report to its membership and to the Public Utilities Commission of the State of Colorado as required by C.R.S. 9-1.5-103(7)(c)(d) & 9-1.5-105.

The intended audience for this report includes the following stakeholder groups: underground facility owners and operators, the underground facility location and marking industry, the excavation and construction industry, related industry associations, the One-Call industry, related regulatory and compliance agencies, appropriate local, county and state governments, and the interested public. COLORADO 811 anticipates that these stakeholder groups will utilize this information to create positive transformation within the utility safety and damage prevention community and specifically within damage prevention programs and efforts. COLORADO 811 is not responsible for any action taken based upon the data or the interpretation of any information presented within this report.

Additional information is available in past Damage Data Report reports from 2001 to 2008. Please visit the COLORADO 811 web site at [www.Colorado811.org](http://www.Colorado811.org). Click Menu Bar on Left: *Reports, Damage Data Reports*.

---

### IMPORTANT REPORTING INFORMATION

Colorado facility owners and operators are required by state law to submit their facility damage data within 90 days of service restoration for each damage event. Other damage prevention stakeholders are encouraged to submit their damages to help facilitate analysis of the damage data.

Please visit: [www.cga-DIRT.com/Colorado811](http://www.cga-DIRT.com/Colorado811) to register and submit your underground facility damages for 2010. The deadline for 2010 data submission is March 31, 2011.

---

*The methods and formulas used to determine the damage prevention metrics, regressions, scores and grades utilize proprietary techniques and intellectual property that was developed and is owned by Foresight Advantage. They may not be used without the expressed written consent of Foresight Advantage. COLORADO 811 is granted the right to publish the results, but not the methods used in this report.*

## COLORADO DAMAGE PREVENTION REPORT CARD

This report includes the **2009 Damage Prevention Report Card** for each of the 64 counties in Colorado. 2009 marks the 3rd year COLORADO 811 has published this valuable resource. The report card is designed to provide interested stakeholders a detailed understanding of damage reporting compliance by local stakeholders as well as the effectiveness of public awareness and damage prevention efforts in the county. Based upon the grading results each year, COLORADO 811 will identify and acknowledge those stakeholders who are performing effectively at the highest levels and provide guidance and assistance to those stakeholders needing improvement. Since each county is evaluated and graded relative to all other counties, our aim is to raise the reporting compliance, public awareness, and damage prevention level of all counties over time through continued innovation and sharing of effective damage prevention practices. Information is presented in this report that demonstrates Colorado has been effective at improving awareness and decreasing the damage metric over the past five years.

# Perspectives on Facility Damage - 2009

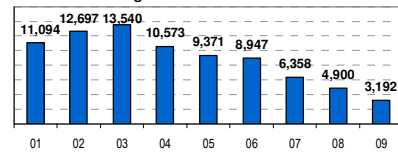
## KEY FINDINGS

### General facility damage information.

- 3,192 damages were reported in 2009, a 34.9% decrease from 4,900 damages in 2008.
- This decreasing trend is in its sixth year (Charts 1&2).
- **Excavators requested a locate on 63.0% and did not request a locate on 37.0% of the damages where a root cause option was selected (Chart 3, also see Root Cause section).**
- Facility owners did not specify a root cause option for 7.5% of reported damages. The share of damages without a reported root cause increased from 2.9% in 2008.
- DIRT Damages were reported in 55 of 64 counties, and in 256 cities, while 2 counties reported 0 damages.

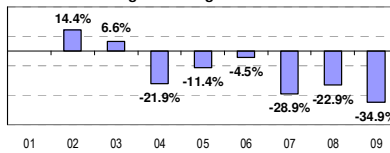
Colorado Facility Damages 2001-2009

Chart 1 # Damages



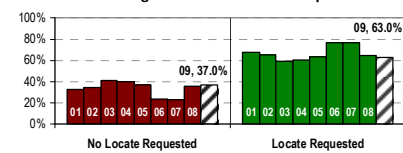
Colorado Facility Damages 2001-2009

Chart 2 % Change in Damages Year to Year



Colorado Facility Damages 2001-2009

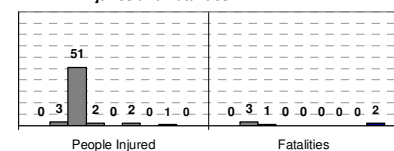
Chart 3 % Damages Without and With Request



- One injury and 2 fatalities were reported in 2009 (Chart 4).
- Owners reported 771 customers were affected by the facility damages (Chart 5).  
55% of the owners reported some value >=0, as shown by the diamond line.
- Owners reported 57,258 hours of service outage due to facility damages (Chart 6).  
14.3% of the owners reported some value >=0, as shown by the diamond line.
- The large decrease in recent years is likely due to under-reporting of this information after conversion to the Virtual Privet DIRT system in 2006.

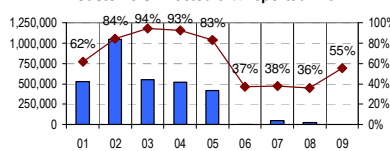
Colorado Facility Damages 2001-2009

Chart 4 Injuries and Fatalities



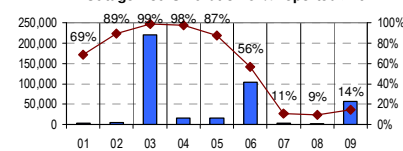
Colorado Facility Damages 2001-2009

Chart 5 Customers Affected & %Reported >=0



Colorado Facility Damages 2001-2009

Chart 6 Outage Hours Duration & %Reported >=0

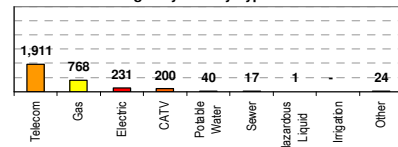


### Which facility type was damaged?

- Owners reported 1,911 (59.9%) Telecommunication facility damages (Charts 7&8).
- Owners reported 768 (24.1%) Gas facility damages.
- Owners reported 231 (7.2%) Electric facility damages.
- The general trend of all facility damages has been decreasing since 2003 (Chart 9).
- Telecommunication, gas and electric facility represent the best quality of data reporting.
- 13 counties (20% of 64 counties) had at least 75 facility damages, and combined these counties had 2,431(76.2%) facility damages. (See also Page-9, Table-C)

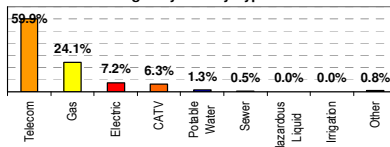
Colorado Facility Damages 2009 (All data)

Chart 7 # Damages by Facility Type



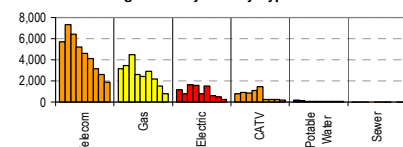
Colorado Facility Damages 2009 (exclude Unknown)

Chart 8 % Damages by Facility Type



Colorado Facility Damages 2001-2009

Chart 9 DamageTrend by Facility Type

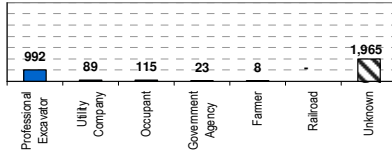


# Perspectives on Facility Damage - 2009

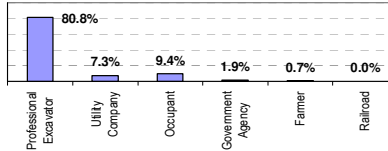
## Who was excavating when the damage occurred?

- A professional excavator was identified on 992 damages (80.8%) (Charts 10&11).
- Professional excavators' contribution ranged between 78-94% over the years (Chart 12).
- Utility company staff was identified on 89 damages (7.3%).
- A homeowner or business occupant was identified on 115 damages (9.4%).
- Facility owners did not report the excavator type on 1,965 damages (61.6%), significantly reducing the quality of the data reporting and analysis after 2005.
- The share of damages for each excavator type remains stable over the years (Chart 12).

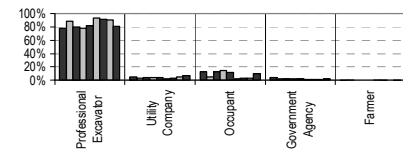
Colorado Facility Damages 2009 (All data)  
Chart 10 # Damages by Excavator Group



Colorado Facility Damages 2009 (exclude Unknown)  
Chart 11 % Damages by Excavator Group



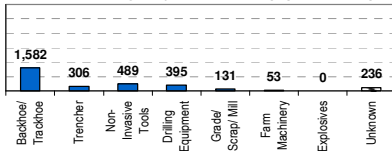
Colorado Facility Damages 2001-2009  
Chart 12 % Damage Trend by Excavator Group



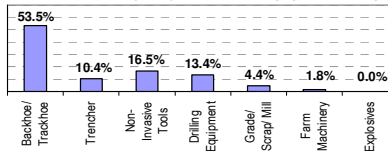
## What excavation equipment was used when the damage occurred?

- Backhoe and trackhoe equipment damaged 1,582 facilities (53.5%) (Charts 13&14).
- Non-invasive (hand tool, probe and vacuum) equipment damaged 489 facilities (16.5%).
- Facility owners did not report the excavation equipment type on 236 damages (7.4%), significantly improving the quality of the data reporting and analysis over 2006.
- The share of damages for each equipment type remains stable over the years (Chart 15).

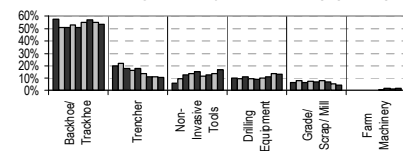
Colorado Facility Damages 2009 (All data)  
Chart 13 # Damages by Excavation Equipment Group



Colorado Facility Damages 2009 (exclude Unknown)  
Chart 14 % Damages by Excavation Equipment Group



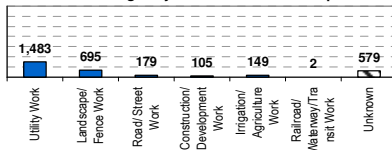
Colorado Facility Damages 2001-2009  
Chart 15 % Damage Trend by Excavation Equip Group



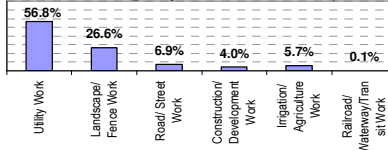
## What work was performed when the damage occurred?

- The utility work group contributed 1,483 damaged facilities (56.8%) (Charts 16&17).
- The landscaping/fencing work group contributed 695 damaged facilities (26.6%).
- Landscaping work contributed the most damages with 404 (12.7%) followed by Water work 388 (12.2%). (Note: The charts reflect groupings of similar work performed types).
- Facility owners did not report the work performed type on 579 damages (18.1%), significantly reducing the quality of the data reporting and analysis over 2007 and 2008.
- The share of damages for each work type group remains stable over the years (Chart 18).

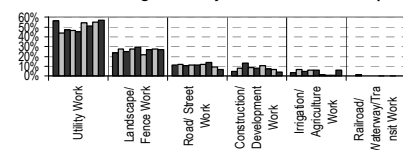
Colorado Facility Damages 2009 (All data)  
Chart 16 # Damages by Work Performed Group



Colorado Facility Damages 2009 (exclude Unknown)  
Chart 17 % Damages by Work Performed Group



Colorado Facility Damages 2001-2009  
Chart 18 % Damage Trend by Work Performed Group

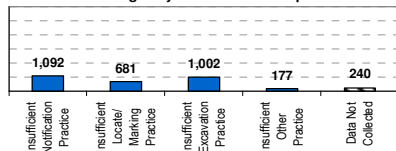


# Perspectives on Facility Damage - 2009

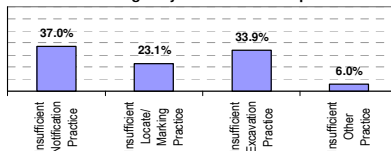
## What was the root cause of the damage?

- Facility owners reported 1,092 damages (37.0%) due to insufficient notification practices. 43 of these were not properly notified or provided wrong information (Charts 19 & 20).
- Facility owners reported 681 damages (23.1%) due to insufficient locate/markings practices.
- Facility owners reported 1,002 damages (33.9%) due to insufficient excavation practices.
- Facility owners reported 177 damages (4.7%) due to another root cause not listed.
- Facility owners did not report the root cause on 240 damages (7.5%), reducing the quality of the data reporting and analysis over 2008.
- The share of damages due to each root cause has shown some variance over the years, and changed considerably in 2006 and 2007 (Chart 21), likely due to inconsistent data collection procedures and the switch-over to the Virtual Private DIRT system.
- **NOTE:** Use of the option “Other Root Cause” does not provide any clue as to the root cause of the damage. The submitter did NOT select “Locate Not Requested”, so we might assume a locate was in fact requested. But we do not know if the root cause was due to insufficient notification practices, insufficient locate/markings practices, or insufficient excavation practices. **Facility owners are encouraged to research the damage incident and provide an appropriate root cause to facilitate proper analysis of the data.**

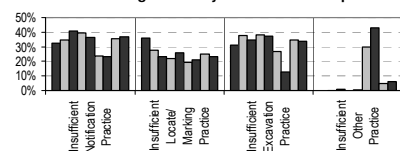
Colorado Facility Damages 2009 (All data)  
Chart 19 # Damages by Root Cause Group



Colorado Facility Damages 2009 (exclude Unknown)  
Chart 20 % Damages by Root Cause Group



Colorado Facility Damages 2001-2009  
Chart 21 % Damage Trend by Root Cause Group



## Root Cause Detail

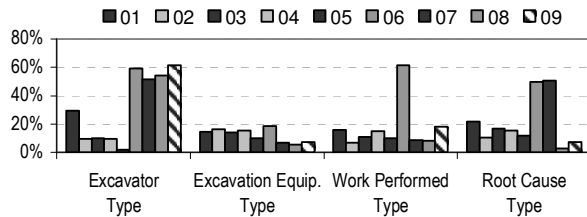
- Of the 681 damages with an incoming request and insufficient locate/markings practice:
  - 500 were located but had insufficient marks,
  - 143 were not located by the facility owner/operator,
  - 15 were not located because they could not be found by the locator,
  - 23 were not properly located because of incorrect map information.
- Of the 1,002 damages with an incoming request and insufficient excavation practice:
  - 187 were reported as insufficient excavation practices,
  - 677 indicated that 18" of clearance was not maintained by the excavator,
  - 62 indicated that a hand tool not used by excavator within 18 inches of marks,
  - 48 indicated that the excavator did not properly maintain the marks,
  - 24 indicated that a test hole (potholing) not used by excavator when required,
  - 3 indicated that the facility was not properly supported during excavation,
  - 1 indicated that excavator did not properly backfill the excavation.
- Of the 177 damages with an incoming request and sufficient excavation practice, but some other root cause:
  - 156 listed some other root cause,
  - 8 listed previous damage, deteriorated facility, or abandoned facility,
  - 6 listed a call center error.

# Perspectives on Facility Damage - 2009

## A NOTE ABOUT “DATA NOT COLLECTED / UNKNOWN”

From 2001-2005, the quality of the information submitted for most of the requested data elements was improving. This means that facility owners/operators were researching and providing a valid option for the data element instead of the “Unknown/Other” or “Data Not Collected” options. As Chart A and Table A show, when facility owners/operators began submitting their data directly into Virtual Private DIRT in 2006, the quality of the information decreased significantly as measured by the percent of unknown or not collected data.

**Colorado Facility Damages 2001-2009**  
**Chart A % Data Unknown / Not Collected**



**Colorado Facility Damages**  
**% Data Unknown or Not Collected**

Table A	05	06	07	08	09
Excavator Type	2.2%	59.4%	51.9%	54.1%	61.6%
Excavation Equipment Type	10.0%	18.5%	7.2%	5.6%	7.4%
Work Performed Type	10.0%	61.7%	8.7%	8.1%	18.1%
Root Cause Type	12.0%	49.7%	50.5%	2.9%	7.5%

Note the general improvement in Excavation Equipment Type, Work Performed Type and Root Cause Type from 2007 to 2009. Also note that for 61.6% of the reported damages the Excavator Type was not reported in 2009.

*Facility owners/operators are encouraged to collect and submit accurate and complete information on all facility damages. Lack of information limits our ability to analyze the data and to draw accurate and useful conclusions about facility damage.*

## SUPPLEMENTAL DATA CHARTS

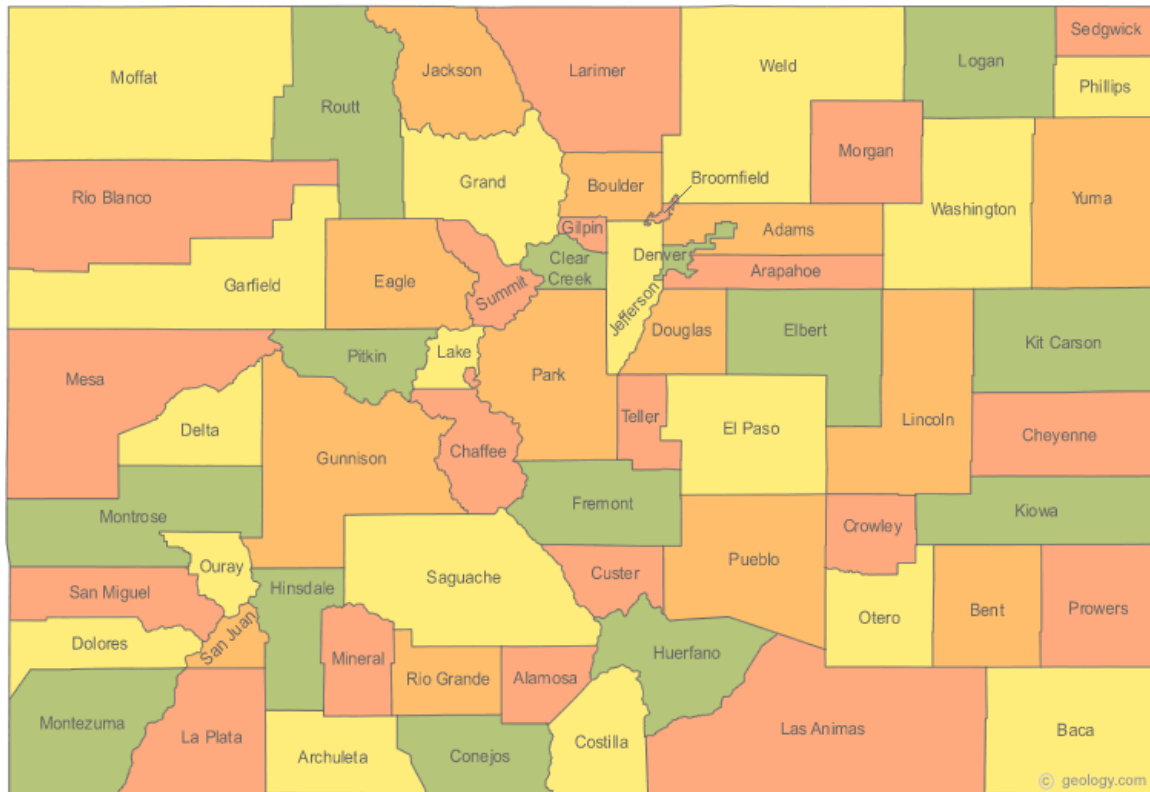
Pages 8 through 15 illustrate the following information for the 64 Colorado counties:

- Page 8 County Map of Colorado, Table B - State Demographic and One-Call Statistics
- Page 9 Table C - Share of Data and Cumulative Share of Data by County
- Page 10 Table D - Demographic and One-Call Data by County
- Page 11 Chart B - Incoming Tickets by County - 2005 through 2009
- Page 12 Chart C - Adjusted Facility Damages by County - 2005 through 2009
- Page 13 Chart D - DP Awareness Measure by County - 2005 through 2009
- Page 14 Chart E - Damage Prevention Measure by County - 2005 through 2009
- Page 15 Chart F- Facility Damages and Demographic Comparison - 2009

The chart on page 15 should help the viewer understand the relationship between Facility Damages, Incoming Tickets, Population, and Residential Building Permits in each of the counties.

# Perspectives on Facility Damage - 2009

## County Map of Colorado



**Table B – State Demographic and One-Call Data**

DEMOGRAPHICS									
Land Area:	104,093 Square Miles							%Change	%Change
	2003	2004	2005	2006	2007	2008	2009	2003-2009	2008-2009
Population:	4,585,803	4,649,267	4,713,246	4,807,199	4,895,355	4,987,285	5,074,114	10.6%	1.7%
Population Density:	44.1	44.7	45.3	46.2	47.0	47.9	48.7	10.6%	1.7%
Net Migration:	24,315	26,412	30,126	54,784	54,686	49,843	29,531	21.5%	-40.8%
Building Permits:	39,569	46,499	45,891	38,343	29,454	18,998	9,355	-76.4%	-50.8%
ONE-CALL DATA									
Incoming Tickets:	750,994	752,161	748,817	706,168	634,630	547,732	470,716	-37.3%	-14.1%
Counties w/ Reported Damages:	56	56	52	56	56	51	55		
DIRT Facility Damages:	13,540	10,573	9,371	8,947	6,358	4,900	3,192	-76.4%	-34.9%
Telecommunications Damages	6,425	5,216	4,639	4,144	3,195	2,602	1,911	-70.3%	-26.6%
Natural Gas Damages	4,489	2,627	2,435	2,939	2,185	1,521	768	-82.9%	-49.5%
Electric Damages	1,666	1,561	790	1,497	635	472	231	-86.1%	-51.1%
Cable TV Damages	847	1,079	1,434	258	235	226	200	-76.4%	-11.5%
Water Damages	90	84	53	89	77	62	40	-55.6%	-35.5%
Sewer Damages	19	5	17	16	21	6	17		
Other Damages	4	1	3	4	10	11	25		
DAMAGE METRIC									
Damages / 1,000 Tickets:	18.0	14.1	12.5	12.7	10.0	8.9	6.8	-62.4%	-24.2%
Telecom Damages / 1,000 Tickets	8.6	6.9	6.2	5.9	5.0	4.8	4.1	-52.5%	-14.5%
Nat Gas Damages / 1,000 Tickets	6.0	3.5	3.3	4.2	3.4	2.8	1.6	-72.7%	-41.2%
Electric Damages / 1,000 Tickets	2.2	2.1	1.1	2.1	1.0	0.9	0.5	-77.9%	-43.1%
Cable TV Damages / 1,000 Tickets	1.1	1.4	1.9	0.4	0.4	0.4	0.4	-62.3%	3.0%
Water Damages / 1,000 Tickets	0.12	0.11	0.07	0.13	0.12	0.11	0.08	-29.1%	-24.9%
Sewer Damages / 1,000 Tickets	0.03	0.01	0.02	0.02	0.03	0.01	0.04		
Other Damages / 1,000 Tickets	0.01	0.00	0.00	0.01	0.02	0.02	0.05		



# Perspectives on Facility Damage - 2009

## Table C – Share of Data and Cumulative Share of Data by County

Table C lists the Population, Net Migration, Permits, Incoming Tickets and Facility Damages as a share of the state total for the sixteen counties with the largest population (sorted in decreasing order). The lower part of the table summarizes the same data for the top sixteen, middle 32 and bottom sixteen counties. The interesting fact is that the top sixteen counties (1/4<sup>th</sup> of the counties) with the largest population represent from 85.5% to 89.1% of each measure; while the bottom sixteen counties with the smallest share of the population represent from between 1.0% to 2.2% of each measure. While this relationship is to be expected, it also suggests that lack of damage reporting by some of the smallest population counties does not materially impact the analysis and usefulness of the data reported by the larger population counties. As stated under *Key Findings* on Page-4, 55 of the 64 counties reported DIRT facility damages in 2009. For the nine counties with no damages reported, seven were adjusted by the damages reported in the Norfield ticketing system and two counties had no damages in either system.

There are three interesting observations evident in the table:

- 1) The proportionally smaller share (3.8%) of facility damages in Denver County in relation to its share of population (12.2%) and incoming tickets (8.1%),
- 2) The proportionally larger share (19.3%) of facility damages in El Paso County in relation to its share of population (11.9%) and incoming tickets (13.1%),
- 3) The change from 2008 to 2009 in the difference in the share of facility damages between the top sixteen counties and the middle 32 counties shows a clear improvement, or a proportional reduction in the share of facility damages for the top sixteen counties.

	Top 16	Tickets	Damages	Middle 32	Tickets	Damages
2008		85.4%	81.8%		13.5%	17.4%
2009		85.5%	78.7% (Improved)		13.3%	19.8% (Worsened)

COUNTY	%Population	Cumulative %Population	%Net Migration	Cumulative %Net Migration	%Permits	Cumulative %Permits	%Incoming Tickets	Cumulative %Incoming Tickets	%Adj DIRT Damages	Cumulative %Adj DIRT Damages
Colorado	5,083,221		29,531		9,355		470,716		3,207	
Denver	12.2%	12.2%	15.2%	15.2%	9.5%	9.5%	8.1%	8.1%	3.8%	3.8%
El Paso	11.9%	24.2%	10.4%	25.7%	14.2%	23.7%	13.1%	21.2%	19.3%	23.2%
Arapahoe	11.2%	35.4%	10.2%	35.8%	12.5%	36.3%	9.6%	30.8%	6.0%	29.1%
Jefferson	10.8%	46.2%	6.8%	42.6%	4.1%	40.3%	8.3%	39.1%	6.4%	35.5%
Adams	8.7%	54.8%	-3.3%	39.3%	5.3%	45.6%	6.5%	45.6%	4.1%	39.6%
Boulder	5.9%	60.7%	3.1%	42.4%	3.7%	49.3%	5.9%	51.5%	3.3%	42.9%
Larimer	5.8%	66.6%	5.0%	47.4%	4.8%	54.1%	7.1%	58.6%	5.1%	48.0%
Douglas	5.7%	72.3%	6.7%	54.2%	9.1%	63.2%	5.7%	64.3%	5.3%	53.3%
Weld	5.1%	77.3%	10.1%	64.3%	8.1%	71.3%	7.8%	72.0%	6.6%	59.9%
Pueblo	3.1%	80.5%	5.2%	69.5%	4.0%	75.4%	2.8%	74.8%	6.1%	66.0%
Mesa	2.9%	83.4%	6.7%	76.3%	3.9%	79.3%	3.5%	78.3%	4.4%	70.4%
Garfield	1.1%	84.5%	2.2%	78.4%	0.8%	80.1%	1.6%	79.9%	2.5%	72.9%
Broomfield	1.1%	85.7%	7.3%	85.7%	1.7%	81.8%	1.4%	81.3%	0.7%	73.6%
Eagle	1.1%	86.7%	1.5%	87.3%	0.8%	82.6%	0.9%	82.2%	1.7%	75.3%
La Plata	1.0%	87.8%	0.7%	88.0%	2.5%	85.1%	2.5%	84.7%	2.1%	77.4%
Fremont	1.0%	88.7%	1.2%	89.1%	0.5%	85.6%	0.7%	85.5%	1.4%	78.7%
Top 16		88.7%		89.1%		85.6%		85.5%		78.7%
Next 32		10.3%		9.9%		12.4%		13.3%		19.8%
Bottom 16		1.0%		1.0%		2.0%		1.2%		1.5%

# Perspectives on Facility Damage - 2009

## Table D – Demographic and One-Call Data by County

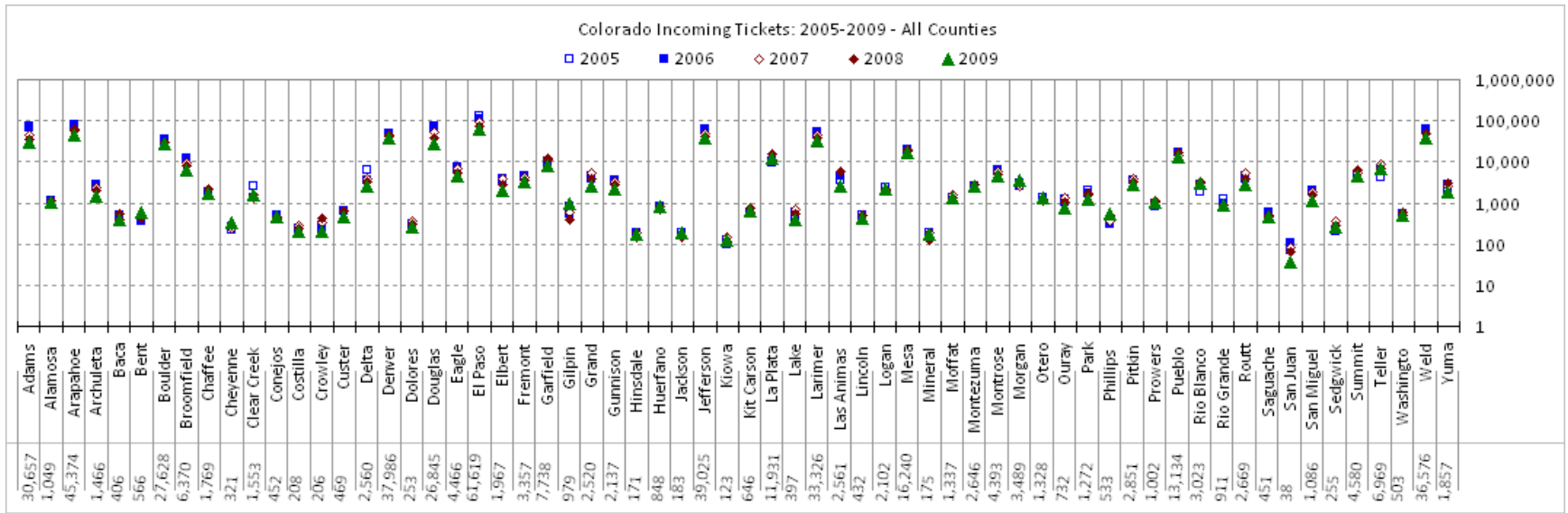
**Table D** lists the Demographic and One-Call data (with rank order where 1 is most and 64 is least) for the 64 Colorado counties ordered alphabetically. Each county includes Adjusted DIRT Damages, Incoming One-Call Tickets, Population, Net Migration and Building Permits. Note that only 55 of the 64 counties had facility damages reported in DIRT. Seven of the remaining nine counties had at least one facility damage reported in the Norfield ticketing system. The remaining two counties had no damages reported in either system. Also note that the Adjusted DIRT damages may not include all facility damages that actually occurred in the county.

Colorado	3,207		470,716		5,083,221		29,531		9,355	
COUNTY	Adj DIRT Damages	Rank: 1 is most	Incoming Tickets	Rank: 1 is most	Population	Rank: 1 is most	Net Migration	Rank: 1 is most	Permits	Rank: 1 is most
Adams	130	9	30,657	7	439,837	5	(976)	64	493	6
Alamosa	21	27	1,049	39	16,186	31	126	26	30	32
Arapahoe	191	5	45,374	2	570,236	3	3,005	3	1,172	2
Archuleta	1	51	1,466	34	12,933	36	162	23	42	26
Baca	1	51	406	53	4,133	55	0	48	1	56
Bent	2	45	566	46	6,213	48	49	32	3	54
Boulder	105	11	27,628	8	301,804	6	918	11	345	11
Broomfield	22	25	6,370	15	57,411	13	2,154	5	160	13
Chaffee	22	25	1,769	32	17,279	27	163	22	91	17
Cheyenne	3	43	321	55	2,006	59	1	47	0	62
Clear Creek	4	42	1,553	33	9,427	39	(49)	55	8	46
Conejos	1	51	452	50	8,414	41	(25)	52	17	39
Costilla	2	45	208	58	3,488	56	(7)	50	34	31
Crowley	0	63	206	59	6,284	47	48	34	1	56
Custer	1	51	469	49	4,210	54	92	30	60	23
Delta	33	22	2,560	26	32,071	18	420	16	13	44
Denver	123	10	37,986	4	622,107	1	4,497	1	888	3
Dolores	11	33	253	57	2,029	58	6	45	1	56
Douglas	169	6	26,845	9	289,445	8	1,988	7	851	4
Eagle	56	17	4,466	17	55,269	14	457	15	78	19
El Paso	620	1	61,619	1	605,976	2	3,082	2	1,333	1
Elbert	30	23	1,967	30	23,310	23	(75)	59	39	27
Fremont	44	20	3,357	20	48,307	16	341	17	46	24
Garfield	80	13	7,738	13	58,377	12	638	13	78	19
Gilpin	1	51	979	41	5,264	50	46	35	16	40
Grand	47	19	2,520	27	14,763	33	37	37	140	14
Gunnison	25	24	2,137	28	15,264	32	(107)	62	87	18
Hinsdale	3	43	171	62	886	63	14	39	9	45
Huerfano	5	40	848	43	8,178	43	131	24	35	30
Jackson	1	51	183	60	1,453	61	13	40	7	47
Jefferson	206	3	39,025	3	547,728	4	2,009	6	379	8
Kiowa	1	51	123	63	1,455	60	7	44	5	52

COUNTY	Adj DIRT Damages	Rank	Incoming Tickets	Rank	Population	Rank	Net Migration	Rank	Permits	Rank
Kit Carson	2	45	646	45	8,392	42	(2)	49	1	56
La Plata	66	15	11,931	12	51,268	15	215	20	233	12
Lake	2	45	397	54	8,681	40	236	19	0	62
Larimer	165	7	33,326	6	297,268	7	1,474	10	451	7
Las Animas	17	29	2,561	25	16,857	30	206	21	18	38
Lincoln	6	38	432	52	5,656	49	(13)	51	7	47
Logan	14	32	2,102	29	21,719	25	(35)	54	15	42
Mesa	141	8	16,240	10	147,258	11	1,986	8	365	10
Mineral	1	51	175	61	997	62	11	41	7	47
Moffat	11	33	1,337	35	14,598	34	299	18	21	35
Montezuma	40	21	2,646	24	25,920	21	106	27	16	40
Montrose	61	16	4,393	18	42,156	17	683	12	118	15
Morgan	15	31	3,489	19	28,689	20	(87)	60	19	37
Otero	5	40	1,328	36	19,005	26	(105)	61	3	54
Ouray	6	38	732	44	4,816	51	100	28	21	35
Park	16	30	1,272	37	17,271	28	129	25	106	16
Phillips	9	37	533	47	4,582	53	(27)	53	7	47
Pitkin	94	12	2,851	22	17,268	29	46	35	27	33
Prowers	2	45	1,002	40	13,406	35	(64)	57	1	56
Pueblo	195	4	13,134	11	159,687	10	1,541	9	377	9
Rio Blanco	1	51	3,023	21	7,258	45	638	13	26	34
Rio Grande	10	36	911	42	12,569	37	(65)	58	14	43
Routt	68	14	2,669	23	23,991	22	84	31	70	22
Saguache	1	51	451	51	7,154	46	49	32	39	27
San Juan	1	51	38	64	574	64	3	46	4	53
San Miguel	11	33	1,086	38	7,957	44	99	29	44	25
Sedgwick	1	51	255	56	2,555	57	25	38	1	56
Summit	53	18	4,580	16	29,460	19	9	43	78	19
Teller	18	28	6,969	14	22,738	24	(129)	63	36	29
Washington	0	63	503	48	4,743	52	10	42	7	47
Weld	212	2	36,576	5	256,982	9	2,996	4	761	5
Yuma	2	45	1,857	31	10,003	38	(52)	56	0	62

# Perspectives on Facility Damage - 2009

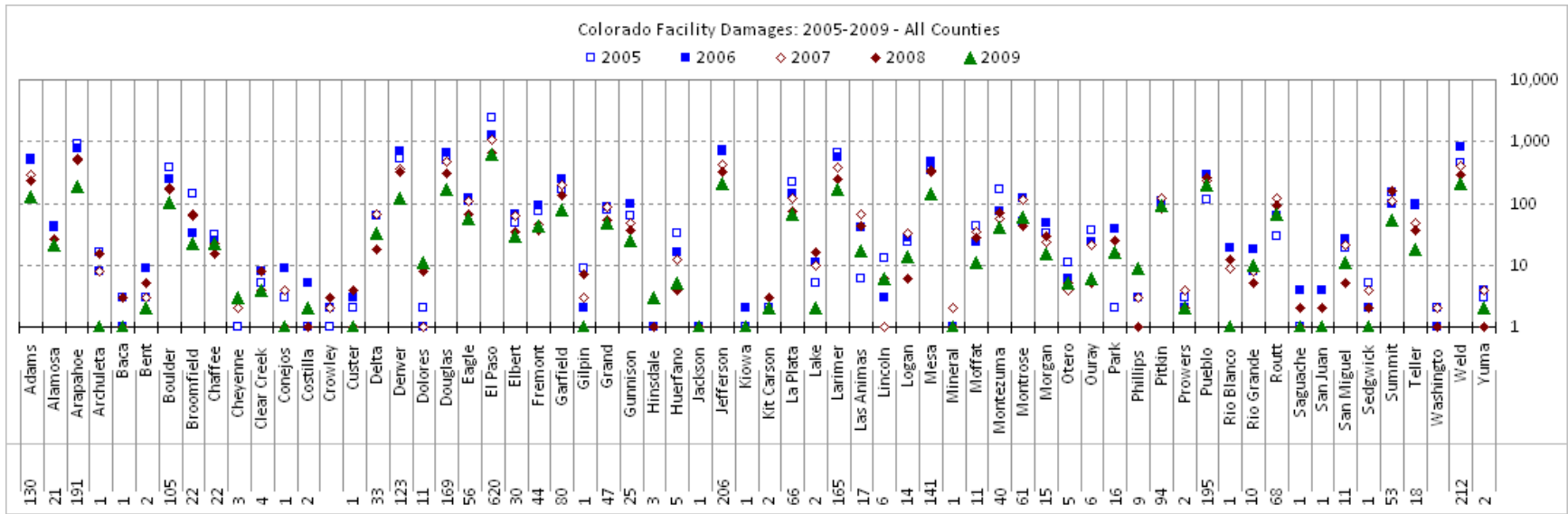
## Chart B – Incoming Tickets by County



**Chart B** represents the number of incoming tickets (reported from the Norfield ticketing system) for each county for 2005, 2006, 2007, 2008 and 2009. The number of incoming tickets for 2009 is reported at the bottom of the chart. The decreasing trend from 2005 to 2009 is primarily due to the slowing economic climate as well as the decrease in construction activity in the housing and commercial building sectors. The vertical axis has been plotted on a logarithmic scale, so each higher axial mark is a ten-fold increase from the lower mark.

# Perspectives on Facility Damage - 2009

## Chart C – Adjusted Facility Damages by County



**Chart C** represents the number of adjusted DIRT facility damages for each county for 2005, 2006, 2007, 2008 and 2009. The number facility damages for 2009 is reported at the bottom of the chart. The decreasing trend from 2005 to 2009 is due significantly to improvements in public awareness and damage prevention efforts as well as the slowing economic climate and the decrease in construction activity in the housing and commercial building sectors. The vertical axis has been plotted on a logarithmic scale, so each higher axial mark is a ten-fold increase from the lower mark.

# Perspectives on Facility Damage - 2009

Chart D – DP Awareness Measure by County  
( Ln(Density Adjusted Incoming Tickets ) / LN(Population) )

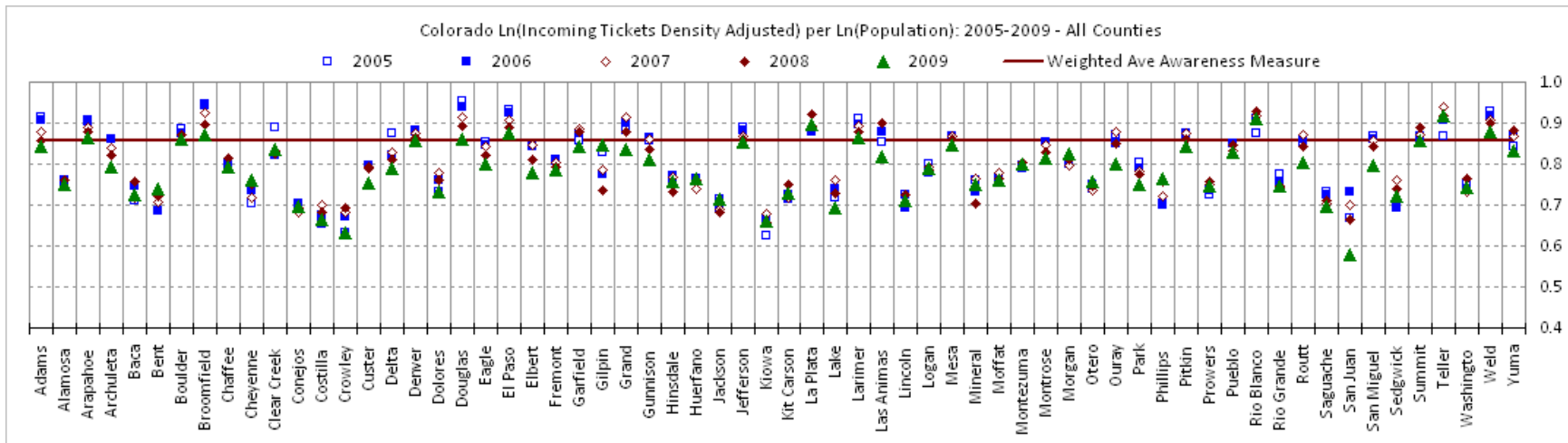
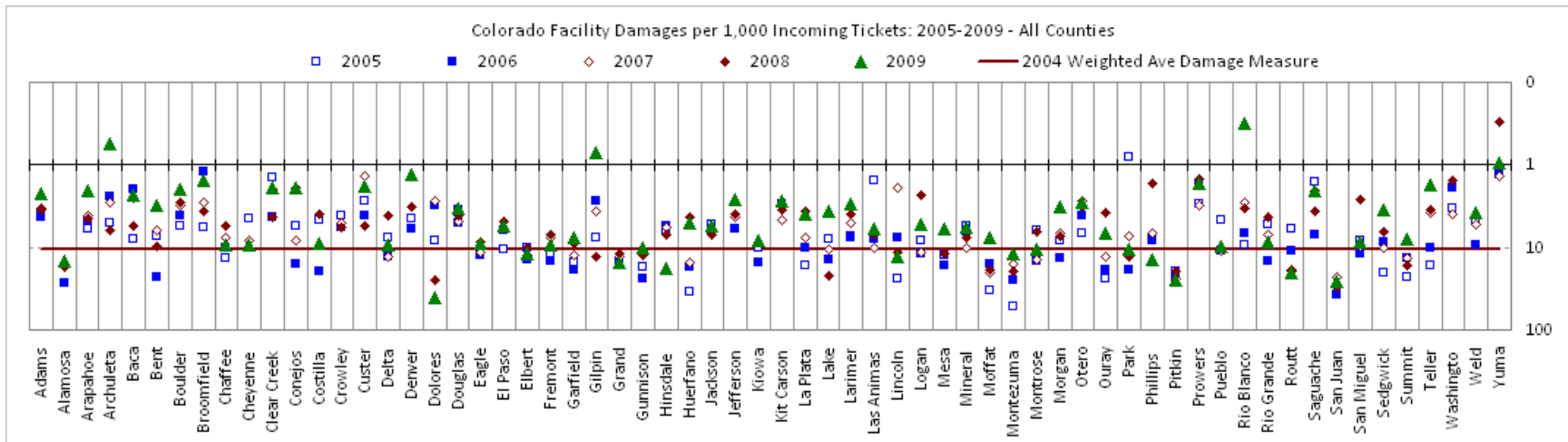


Chart D represents the Damage Prevention Awareness Metric as measured by the Ln(Density Adjusted Incoming Tickets) divided by Ln(Population) for each county for 2005, 2006, 2007, 2008 and 2009. The red horizontal line (0.86) is the population weighted average ratio for 2009 and has no direct interpretation other than in relation to the other counties. The DP Awareness Metric works best for comparing counties in the same year. Those counties *above* the red line are *performing better* than those counties *below* the red line.

The DP Awareness Metric will decrease from one year to the next if incoming tickets decrease during periods of economic and construction slowing while the population slowly increases. So counties showing a **decrease in the ratio** over time may still have **improved public awareness** if construction activity is decreasing faster than incoming tickets are decreasing. If incoming tickets are increasing proportionally faster than population is increasing, the ratio will get larger, but the change is likely driven by changing economic conditions.

# Perspectives on Facility Damage - 2009

**Chart E – Damage Prevention Measure by County  
(Adjusted DIRT Damages per 1,000 Density Adjusted Incoming Tickets)**



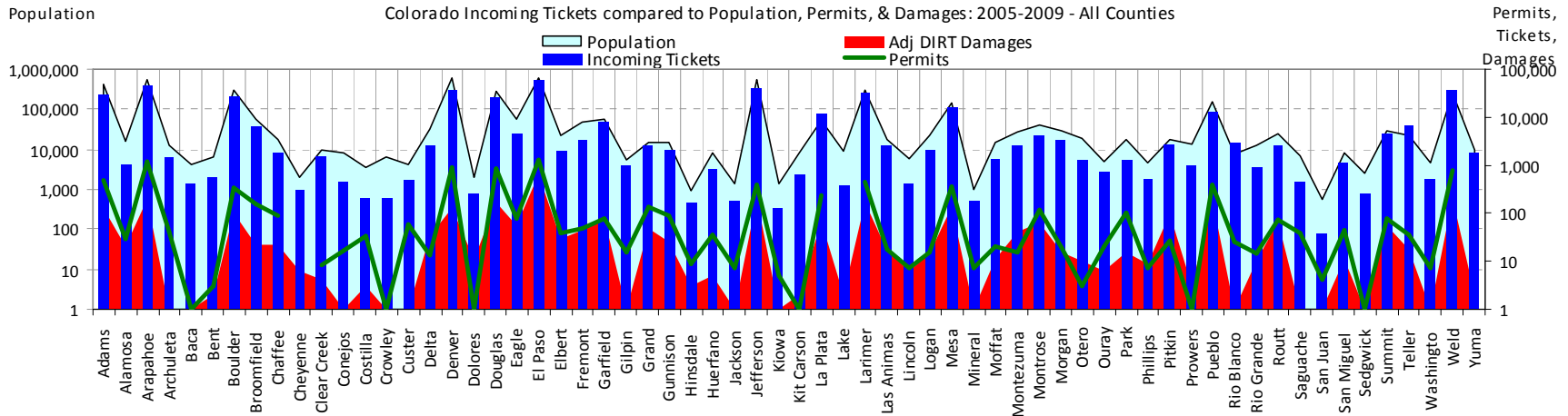
**Chart E** represents the Damage Prevention Metric as measured by the number of Adjusted DIRT Damages per 1,000 Density Adjusted Incoming Tickets for each county for 2005, 2006, 2007, 2008 and 2009. The red horizontal line (10.8) is the damage weighted average ratio in 2004. Counties *below* the red line, showing a higher ratio of facility damages per ticket, are *performing worse* than counties *above* the red line. Counties showing a **decrease in the ratio** over time (the marker moved up the vertical axis) have **improved damage prevention** over the years, as measured by decreasing facility damages per incoming ticket, during a time when both incoming tickets and facility damages were decreasing. For most counties, facility damages were decreasing proportionally faster than incoming tickets were decreasing, resulting in a lower Damage Prevention Metric, or ratio. The vertical axis has been plotted on a logarithmic scale, so each lower axial mark is a ten-fold increase from the higher mark.

Careful inspection of the chart should reveal more counties below the red line in 2005 (a higher overall damage ratio for Colorado with 17 hollow blue squares below the red line) than in 2009 (a lower overall damage ratio for Colorado with only 11 green triangles below the red line).

**In other words, although the economy and construction activity slowed from 2005-2009, reducing both the number of incoming tickets and facility damages, the level of damages decreased significantly for the level of tickets in many of the Colorado counties. This resulted from the tremendous efforts to promote public awareness and provide stakeholder education by the DPAT, the DPCs, industry organizations and many other Colorado stakeholders as well as the special grant funding from PHMSA that helped support some of these efforts.**

# Perspectives on Facility Damage - 2009

## Chart F – Facility Damages and Demographic Comparison by County Adjusted DIRT Damages, Incoming Tickets, Population and Permits



**Chart F** represents the number of Adjusted DIRT damages, Density Adjusted Incoming Tickets, Population and Housing Permits for each county in 2009. The counties are listed in alphabetical order from left to right. Notice that most counties that have a larger number of permits also have a larger number of incoming tickets and facility damages than counties with a similar population size. This visually suggests that there is a relationship between population, housing permits and both incoming tickets and facility damages. The vertical axis has been plotted on a logarithmic scale, so each higher axial mark is a ten-fold increase from the lower mark.

# Measuring County Damage Prevention Grades - 2009

## DAMAGE PREVENTION GRADING PROCESS

Pages 16 through 22 describe the methods used with the *2009 Damage Prevention Report Card* for scoring and grading each county. The report card utilizes metrics derived from three damage prevention areas:

- 1) Public Awareness
- 2) Damages
- 3) Damage Reporting

These three metrics are then combined to derive a *Composite Damage Prevention Grade*. A fourth metric will be added in the future to measure *Damage Prevention Activity* undertaken by stakeholders in each county. Page 22 contains a comprehensive listing of the Damage Prevention Grades sorted by Composite Grade.

### Colorado Damage Prevention Report Cards

Pages 23 through 87 show the Damage Prevention Report Card for each of the 64 Colorado counties. All of the demographic and One-Call data used to generate each metric, score, and grade is included on the report card. The scores and grades on the report cards are the same as those presented in the tables on pages 16-22.

### Description of the Public Awareness Metric

The *Public Awareness Metric* assesses the level of incoming tickets compared to the level of the population. As population increases in different areas of the state, incoming tickets should increase also. Some level of the ratio of the two measures should be representative of an acceptable level of public awareness. As time passes though, the economy as well as construction activity may undergo periods of expansion and contraction, which has an effect on the ratio. As construction activity slows down, incoming tickets will generally slow down, while population may slowly increase. In this case, the ratio will decrease; though this does not mean that the public awareness level has fallen. If incoming tickets are decreasing at a slower rate than construction activity, the public awareness level may be actually increasing. This ratio is best used to compare public awareness between counties in the same year and not across multiple years.

Since higher density population areas tend to utilize more vertical construction styles (high rise office buildings, multi-story apartments, etc.) there is a natural tendency for fewer incoming tickets for the level of population. This tendency suggests the need to adjust the incoming ticket level for higher population density areas. An algorithm was developed to make just such an adjustment for each county as the population density increases. In addition, both the adjusted incoming tickets and the population were transformed by the Natural Log function since there is such a large variance between the highest and lowest values of each.

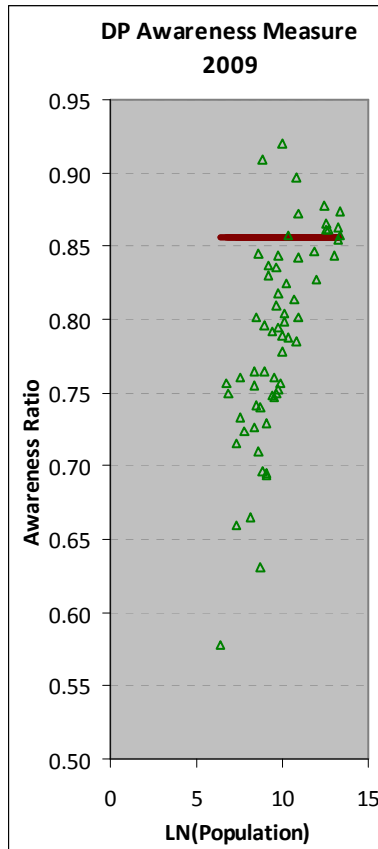
The Public Awareness Metric is thus calculated as a ratio of  $\text{LN}(\text{Density Adjusted Incoming Tickets}) / \text{LN}(\text{Population})$ . This ratio ranged from 0.58 to 0.92 with an average of 0.79, a ticket weighted average of 0.86, and a standard deviation of 0.07. Twelve counties have a Public Awareness ratio above the ticket weighted average of 0.86, leaving 52 counties below the average.



# Measuring County Damage Prevention Grades - 2009

## Chart G – Public Awareness Metric

Chart G represents the Damage Prevention Awareness Metric with the awareness ratio on the vertical axis and the Natural Log of Population on the horizontal axis. The red line represents the incoming ticket weighted average awareness ratio (0.86) for the state. Counties near or above the red line have better levels of public awareness than those below the red line.



The table to the right lists the 64 counties sorted by the awareness ratio for 2009. The color scheme represents the Public Awareness Measure letter grade for the county.

Color	Grade	#Counties
Pink	F	7
Orange	D	16
Yellow	C	28
Green	B	9
Dark Green	A	4

The thirteen counties near or above the state average (0.86) received a letter grade of A or B. The 51 counties below the state average received a letter grade of C, D or F.

The 24 counties highlighted in blue each have a Damage Prevention Council. Twenty-one of the 24 counties with a DPC have an awareness ratio above the state awareness ratio average (0.79). This demonstrates that having a DPC positively impacts the public awareness efforts in a county.

Awareness Measure 2009	
San Juan	0.578
Crowley	0.630
Kiowa	0.660
Costilla	0.665
Lake	0.693
Conejos	0.695
Saguache	0.696
Lincoln	0.710
Jackson	0.715
Sedgwick	0.723
Baca	0.726
Kit Carson	0.729
Dolores	0.734
Bent	0.739
Washington	0.741
Prowers	0.747
Rio Grande	0.748
Alamosa	0.749
Mineral	0.750
Park	0.752
Custer	0.755
Otero	0.756
Hinsdale	0.756
Moffat	0.761
Cheyenne	0.761
Huerfano	0.764
Phillips	0.765
Elbert	0.778
Fremont	0.785
Delta	0.788
Logan	0.789
Archuleta	0.792
Chaffee	0.794
San Miguel	0.796
Montezuma	0.799
Ouray	0.801
Eagle	0.801
Routt	0.803
Gunnison	0.810
Montrose	0.814
Las Animas	0.817
Morgan	0.824
Pueblo	0.828
Yuma	0.831
Grand	0.835
Clear Creek	0.837
Garfield	0.842
Pitkin	0.844
Adams	0.844
Gilpin	0.845
Mesa	0.847
Jefferson	0.854
Summit	0.857
Denver	0.857
Douglas	0.861
Boulder	0.862
Arapahoe	0.863
Larimer	0.866
Broomfield	0.873
El Paso	0.874
Weld	0.878
La Plata	0.897
Rio Blanco	0.909
Teller	0.919

# Measuring County Damage Prevention Grades - 2009

## Description of the Damage Metric

The *Damage Metric* assesses the level of facility damages compared to the level of incoming tickets. As incoming tickets increase in different areas of the state, damages most likely increase also. Some level of the ratio of the two measures should be representative of an acceptable level of damage prevention. As time passes though, the economy as well as construction activity may undergo periods of expansion and contraction, which may have an effect on the ratio. As construction activity slows down, both incoming tickets and facility damages should decrease – though the damage ratio should stay about the same. If facility damages are decreasing at a faster rate than incoming tickets are decreasing, the damage ratio will actually decrease, indicating an improvement in damage prevention efforts. This ratio can be used both to compare damage prevention results across time and between counties.

As described in the previous Public Awareness Metric section, the incoming ticket level for each county was adjusted to compensate for population density. There were no facility damages reported in DIRT by facility owners for nine counties. Seven of these nine counties had one or more facility damages reported in the Norfield ticket system by excavators, so DIRT damages were adjusted accordingly. Two counties experienced no facility damages. Since stakeholders desire to improve their damage prevention efforts, and we desire to measure and track this progress over time, we have established the damage ratio in 2004 as the damage ratio threshold to measure progress against. If damage prevention efforts are improving in a county, then the damage ratio should get smaller and move below the threshold over time if a county is above it. In addition, the damage weighted average ratio in each year should decrease if damage prevention efforts have improved.

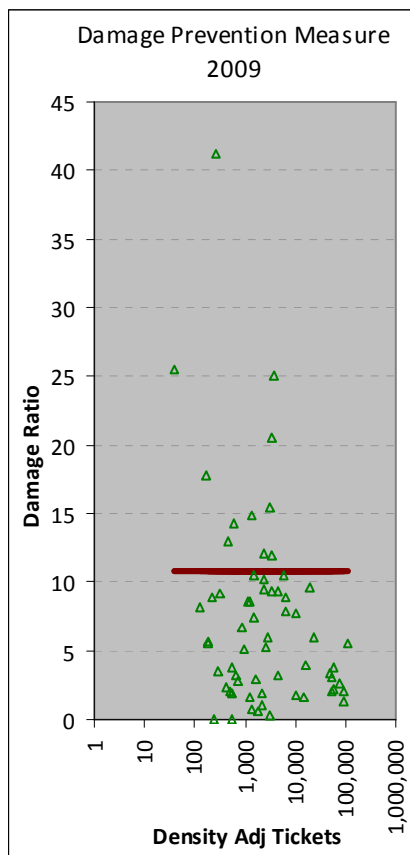
The Damage Metric is thus calculated as a ratio of Adjusted DIRT Damages and 1,000 Density Adjusted Incoming Tickets. This ratio ranged from 0.00 to 41.24 with an average of 7.22, a damage weighted average of 6.37, and a standard deviation of 7.16. The 2004 damage weighted average ratio was 10.78 and is used as a threshold.

***Note that 53 counties have a damage ratio below the 2004 damage threshold of 10.78, leaving only eleven counties above the threshold in 2009. Compare this result to 2004, when thirty-eight counties were above the threshold. Also note that in 2009 the damage weighted average ratio was 6.37, a 40.9% decrease from the 10.78 ratio in 2004.*** This result demonstrates significant progress in damage prevention over the past five years.

# Measuring County Damage Prevention Grades - 2009

## Chart H – Damage Metric

Chart H represents the Damage Metric with the damage ratio on the vertical axis and the Density Adjusted Incoming Tickets on the horizontal axis. The red line represents the damage weighted average damage ratio (10.78) for the state in 2004. Counties near or below the red line have better levels of damage prevention than those above the red line. The 2004 damage ratio was used as the critical threshold to track the number of counties improving their damage prevention efforts over the years. In 2004, 38 Counties were above the state damage ratio average, while in 2009, only 11 counties were above the 2004 state damage ratio average. This is a marked improvement over the past five years.



The table to the right lists the 64 counties sorted by the damage ratio for 2009. The color scheme represents the Damage Measure letter grade for the county.

Color	Grade	#Counties
Pink	F	1
Orange	D	10
Yellow	C	32
Green	B	15
Dark Green	A	6

The 53 counties near or below the state threshold (10.78) received a letter grade of C, B, or A. The eleven counties above the threshold received a letter grade of D or F.

The 24 counties highlighted in blue each have a Damage Prevention Council. Twenty-one of the 24 counties with a DPC have a damage ratio below the 2004 damage ratio threshold. This demonstrates that having a DPC positively impacts the damage prevention efforts in a county.

Damage Measure 2009	
Dolores	41.237
San Juan	25.434
Pitkin	25.007
Routt	20.581
Hinsdale	17.697
Grand	15.478
Alamosa	14.784
Phillips	14.265
Lincoln	13.014
Elbert	12.030
Montezuma	11.911
Montrose	10.468
Park	10.450
Gunnison	10.237
Pueblo	9.619
Chaffee	9.480
Fremont	9.296
Delta	9.275
Cheyenne	9.210
Eagle	8.860
Costilla	8.813
San Miguel	8.625
Rio Grande	8.573
Kiowa	8.185
Summit	7.810
Garfield	7.748
Moffat	7.488
Ouray	6.718
Las Animas	5.966
Mesa	5.915
Mineral	5.628
El Paso	5.476
Jackson	5.468
Logan	5.294
Huerfano	5.113
La Plata	3.944
Weld	3.773
Lake	3.716
Sedgwick	3.434
Douglas	3.351
Morgan	3.179
Bent	3.137
Larimer	3.009
Otero	2.912
Kit Carson	2.758
Jefferson	2.588
Baca	2.364
Adams	2.237
Saguache	2.072
Arapahoe	2.064
Boulder	1.984
Clear Creek	1.889
Conejos	1.873
Custer	1.830
Teller	1.777
Prowers	1.651
Broomfield	1.542
Denver	1.325
Yuma	0.952
Gilpin	0.715
Archuleta	0.555
Rio Blanco	0.309
Crowley	0.000
Washington	0.000

# Measuring County Damage Prevention Grades - 2009

## Description of the Damage Reporting Metric

The *Damage Reporting Metric* is used to assess the level of facility damage reporting for each facility type within a county. For each of eight facility types where at least one damage is reported, a county is given risk weighted points. The points are summed and divided by two to determine the numeric grade, which ranges from 0.00 points if no damages are reported to 4.50 points if a at least one damage is reported for each facility type within a county. This measure can be used both to compare damage prevention reporting across time and between counties.

Table E lists the risk weighting factor and the number of counties with reported damages for each facility type in 2009. Each facility type is assigned a risk weighting factor based upon its relative risk of damage to humans and property, giving the most risk weight to Natural Gas and Electric facility damages. Counties with a higher reporting metric have a higher level of facility damage reporting than counties with a lower metric. This metric penalizes counties where few or no damages are reported. When no facility damages actually occurred in a county and none were reported in DIRT or the Norfield ticketing system, the county is given a score of 4.0. If damage reporting efforts are improving in a county, then the damage reporting metric will increase over time.

	Natural Gas	Electric	Telecom	Cable TV	Water	Sewer	Pipeline	Other
<b>Risk Factor</b>	2.00	2.00	0.75	0.75	1.25	1.25	0.50	0.50
<b>#Counties</b>	43	19	47	19	5	6	1	9

The Damage Reporting Metric is thus calculated as the sum of risk weighted scores for each facility type within a county. This numeric score ranged from 0.25 to 4.25 with an average of 1.63 and a standard deviation of 1.13. Note that in 17 counties, both Natural Gas and Electric damages were reported, while Natural Gas was reported in 43 counties.

The table to the right lists the 64 counties sorted by the damage report score for 2009. The color scheme represents the Damage Reporting Measure letter grade for the county.

Color	Grade	#Counties
Pink	F	15
Orange	D	23
Yellow	C	10
Green	B	12
Dark Green	A	4

The 24 counties highlighted in blue each have a Damage Prevention Council. Eighteen of the top 32 counties with higher damage reporting scores have a DPC. This demonstrates that having a DPC positively impacts the damage reporting efforts in a county.

Reporting Measure 2009	
Cheyenne	0.250
Costilla	0.250
Jackson	0.250
Kiowa	0.250
Mineral	0.250
Otero	0.250
Prowers	0.250
Custer	0.375
Gilpin	0.375
Huerfano	0.375
Lake	0.375
Lincoln	0.375
Park	0.375
Rio Blanco	0.375
San Juan	0.375
Archuleta	0.625
Broomfield	0.750
Routt	0.750
Baca	1.000
Bent	1.000
Conejos	1.000
Hinsdale	1.000
Kit Carson	1.000
Saguache	1.000
Sedgwick	1.000
Clear Creek	1.375
Delta	1.375
Dolores	1.375
Elbert	1.375
La Plata	1.375
Logan	1.375
Moffat	1.375
Morgan	1.375
Ouray	1.375
Phillips	1.375
San Miguel	1.375
Teller	1.375
Yuma	1.375
Fremont	1.750
Garfield	1.750
Grand	1.750
Pueblo	1.750
Alamosa	2.375
Larimer	2.375
Las Animas	2.375
Mesa	2.375
Montrose	2.375
Rio Grande	2.375
Arapahoe	2.750
Boulder	2.750
Denver	2.750
Douglas	2.750
Eagle	2.750
Jefferson	2.750
Summit	2.750
Adams	3.000
Chaffee	3.000
Gunnison	3.000
Montezuma	3.000
Pitkin	3.375
Crowley	4.000
Washington	4.000
El Paso	4.250
Weld	4.250

# Measuring County Damage Prevention Grades - 2009

## Description of the Composite Damage Prevention Metric

The *Composite Damage Prevention Score* is formed through a weighted sum of the grades for each of the three damage prevention metrics:

- 1) Public Awareness Metric      50% Weighting
- 2) Damage Metric                    25% weighting
- 3) Damage Reporting Metric      25% weighting

For 2009, the *Composite Damage Prevention Score* ranged from 0.67 to 3.46 with an average of 2.05 and a standard deviation of 0.67.

The table to the right lists the 64 counties sorted by the composite damage prevention score for 2009. The color scheme represents the Composite Damage Prevention Measure letter grade for the county.

Color	Grade	#Counties
Pink	F	0
Orange	D	12
Yellow	C	36
Green	B	16
Dark Green	A	0

The 24 counties highlighted in blue each have a Damage Prevention Council. Twenty of the top 32 counties with higher composite damage prevention scores have a DPC. This demonstrates that having a DPC positively impacts the overall damage prevention efforts in a county.

Composite Score 2009	
San Juan	0.667
Costilla	0.833
Kiowa	0.917
Lincoln	0.917
Lake	1.000
Dolores	1.083
Jackson	1.167
Park	1.333
Conejos	1.333
Saguache	1.333
Hinsdale	1.417
Mineral	1.417
Bent	1.500
Cheyenne	1.500
Sedgwick	1.500
Baca	1.583
Kit Carson	1.583
Routt	1.583
Otero	1.583
Elbert	1.667
Huerfano	1.667
Phillips	1.667
Custer	1.667
Alamosa	1.750
Delta	1.750
Prowers	1.750
Fremont	1.833
Moffat	1.833
Rio Grande	1.833
Logan	1.917
San Miguel	1.917
Ouray	2.000
Grand	2.083
Montrose	2.167
Pueblo	2.167
Crowley	2.208
Archuleta	2.250
Eagle	2.250
Garfield	2.250
Las Animas	2.250
Montezuma	2.250
Morgan	2.250
Gilpin	2.292
Chaffee	2.333
Gunnison	2.333
Mesa	2.417
Pitkin	2.417
Clear Creek	2.417
Yuma	2.542
Summit	2.667
Washington	2.708
La Plata	2.833
Broomfield	2.833
Jefferson	2.833
Larimer	2.833
Adams	2.833
Douglas	2.917
Rio Blanco	2.958
Denver	3.000
Teller	3.083
Arapahoe	3.083
Boulder	3.083
El Paso	3.375
Weld	3.458

# Measuring County Damage Prevention Grades - 2009

The Table to the right summarizes the letter grades from the 2009 Damage Prevention Report Card for the four grading metrics:

- 1) *Public Awareness Metric*
- 2) *Damage Metric*
- 3) *Damage Reporting Metric*
- 4) *Composite Damage Prevention Metric*

Both Weld and El Paso Counties received the top *Composite Damage Prevention Grade* of “B+” as well as the top *Damage Reporting Grade* of “A+”. The quality of damage reporting by the stakeholders in each of these counties ensures the accuracy of these grades.

Teller, Rio Blanco, La Plata, Weld and El Paso counties received the top five Public Awareness Grades.

There were no facility damages reported for either Washington or Crowley county in either the DIRT or Norfield systems. Both Denver and Broomfield county are recognized for having the lowest damage ratio (approx 1.5 damages per 1,000 Incoming Tickets) for the large metropolitan counties, earning a “B+” Damage Grade.

A special acknowledgement goes to the dedicated stakeholders in each of the 24 Damage Prevention Councils, the Damage Prevention Action Team, UNCC and PHMSA (for the grant funding over the past three years). Without the positive attitudes and hard work of Colorado stakeholders, we would not have made this much progress.

Sorted Report Card List

	2nd Sort	3rd Sort	4th Sort	1st Sort
County	Public Awareness	Damage	Reporting	Composite
Weld	A-	C+	A+	B+
El Paso	B+	C+	A+	B+
Teller	A	B	D+	B
Rio Blanco	A-	A+	F	B
Broomfield	B+	B+	D-	B
Arapahoe	B	B	B-	B
Boulder	B	B	B-	B
Douglas	B	C+	B-	B
Larimer	B	C+	C+	B
Denver	B-	B+	B-	B
Jefferson	B-	B-	B-	B
Adams	C+	B	B	B
La Plata	A-	C+	D+	B-
Summit	B-	C	B-	B-
Yuma	C+	A-	D+	B-
Washington	D+	A+	A	B-
Gilpin	C+	A-	F	C+
Clear Creek	C+	B	D+	C+
Morgan	C+	C+	D+	C+
Garfield	C+	C	C-	C+
Mesa	C+	C	C+	C+
Pueblo	C+	C-	C-	C+
Pitkin	C+	D	B+	C+
Archuleta	C	A	D-	C+
Las Animas	C	C	C+	C+
Chaffee	C	C-	B	C+
Eagle	C	C-	B-	C+
Gunnison	C	C-	B	C+
Montrose	C	C-	C+	C+
Montezuma	C	D+	B	C+
Crowley	F	A+	A	C+
Grand	C+	D+	C-	C
Ouray	C	C	D+	C
San Miguel	C	C-	D+	C
Logan	C-	C+	D+	C
Moffat	C-	C	D+	C
Fremont	C-	C-	C-	C
Rio Grande	D+	C-	C+	C
Routt	C	D	D-	C-
Huerfano	C-	C+	F	C-
Cheyenne	C-	C-	F	C-
Delta	C-	C-	D+	C-
Elbert	C-	D+	D+	C-
Phillips	C-	D+	D+	C-
Prowers	D+	B+	F	C-
Custer	D+	B	F	C-
Otero	D+	B-	F	C-
Alamosa	D+	D+	C+	C-
Baca	D	B-	D	C-
Kit Carson	D	B-	D	C-
Bent	D	C+	D	C-
Sedgwick	D	C+	D	C-
Mineral	D+	C	F	D+
Park	D+	C-	F	D+
Hinsdale	D+	D+	D	D+
Jackson	D-	C+	F	D+
Conejos	F	B	D	D+
Saguache	F	B	D	D+
Dolores	D	F	D+	D
Lincoln	D-	D+	F	D
Kiowa	F	C	F	D
Costilla	F	C-	F	D
Lake	F	C+	F	D
San Juan	F	D	F	D-

# Colorado County Damage Prevention Report Cards - 2009

## 2009 Colorado Damage Prevention Report Card

Colorado Damage Prevention Report Card® is evaluated and published annually by Colorado 811

Reporting Year	<b>2009</b>	
County	<b>Adams</b>	Note: Colorado has 64 Counties

Grading Area	Grade	Score	Rank of 64	Weight
Public Awareness Metric:	C+	0.844	16	50%
Damage Prevention Metric:	B	2.237	17	25%
DIRT Reporting Metric:	B	3.000	6	25%
Stakeholder Participation:	Not Avail 2009	Not Avail 2009	Not Avail 2009	
County Composite Grade:	B	2.833		

Report Card Metrics				
Demographic Data	County Value	% of State	State Value	Rank of 64
Population:	439,837	8.65%	5,083,221	5
Pop Density per SqMile:	372		49	
Housing Permits:	493	5.27%	9,355	6
Net Migration:	(976)	-3.30%	29,531	64

One-Call Data	County Value	% of State	State Value	Rank of 64
Incoming Tickets:	30,657	6.51%	470,716	7
Adjusted Facility Damages:	130	4.05%	3,207	56
Non-Adjusted DIRT Damages:				
Telecommunications	65	3.40%	1,911	
Natural Gas	35	4.56%	768	
Electric	8	3.46%	231	
CableTV	21	10.50%	200	
Water	NotReported	0.00%	40	
Sewer	NotReported	0.00%	17	
Pipeline	1	100.00%	1	
Other	NotReported	0.00%	39	

The Colorado Damage Prevention Report Card® provides industry stakeholders in each county with current One-Call ticketing, underground facility damage and demographic information. This information is designed to provide knowledge of damage prevention conditions and programs in the county as well as to help facilitate improvement in public awareness and damage prevention efforts. Accurate and timely information can lead to more effective public awareness and damage prevention programs.

The Public Awareness Metric provides a density adjusted measure of tickets versus the population.  
 The Damage Prevention Metric provides a measure of adjusted facility damages versus tickets.  
 The DIRT Reporting Metric provides a measure DIRT damage reporting by facility type.

# Colorado County Damage Prevention Report Cards - 2009

## 2009 Colorado Damage Prevention Report Card

Colorado Damage Prevention Report Card® is evaluated and published annually by Colorado 811

Reporting Year	<b>2009</b>	
County	<b>Alamosa</b>	Note: Colorado has 64 Counties

Grading Area	Grade	Score	Rank of 64	Weight
Public Awareness Metric:	D+	0.749	47	50%
Damage Prevention Metric:	D+	14.784	58	25%
DIRT Reporting Metric:	C+	2.375	17	25%
Stakeholder Participation:	Not Avail 2009	Not Avail 2009	Not Avail 2009	
County Composite Grade:	C-	1.750		

Report Card Metrics				
Demographic Data	County Value	% of State	State Value	Rank of 64
Population:	16,186	0.32%	5,083,221	31
Pop Density per SqMile:	22		49	
Housing Permits:	30	0.32%	9,355	32
Net Migration:	126	0.43%	29,531	26

One-Call Data	County Value	% of State	State Value	Rank of 64
Incoming Tickets:	1,049	0.22%	470,716	39
Adjusted Facility Damages:	21	0.65%	3,207	38
Non-Adjusted DIRT Damages:				
Telecommunications	6	0.31%	1,911	
Natural Gas	13	1.69%	768	
Electric	2	0.87%	231	
CableTV	NotReported	0.00%	200	
Water	NotReported	0.00%	40	
Sewer	NotReported	0.00%	17	
Pipeline	NotReported	0.00%	1	
Other	NotReported	0.00%	39	

The *Colorado Damage Prevention Report Card®* provides industry stakeholders in each county with current One-Call ticketing, underground facility damage and demographic information. This information is designed to provide knowledge of damage prevention conditions and programs in the county as well as to help facilitate improvement in public awareness and damage prevention efforts. Accurate and timely information can lead to more effective public awareness and damage prevention programs.

The *Public Awareness Metric* provides a density adjusted measure of tickets versus the population.  
 The *Damage Prevention Metric* provides a measure of adjusted facility damages versus tickets.  
 The *DIRT Reporting Metric* provides a measure DIRT damage reporting by facility type.



# Colorado County Damage Prevention Report Cards - 2009

## 2009 Colorado Damage Prevention Report Card

Colorado Damage Prevention Report Card® is evaluated and published annually by Colorado 811

Reporting Year	<b>2009</b>	Note: Colorado has 64 Counties
County	<b>Arapahoe</b>	

Grading Area	Grade	Score	Rank of 64	Weight
Public Awareness Metric:	B	0.863	8	50%
Damage Prevention Metric:	B	2.064	15	25%
DIRT Reporting Metric:	B-	2.750	10	25%
Stakeholder Participation:	Not Avail 2009	Not Avail 2009	Not Avail 2009	
County Composite Grade:	B	3.083		

Report Card Metrics				
Demographic Data	County Value	% of State	State Value	Rank of 64
Population:	570,236	11.22%	5,083,221	3
Pop Density per SqMile:	709		49	
Housing Permits:	1,172	12.53%	9,355	2
Net Migration:	3,005	10.18%	29,531	3

One-Call Data	County Value	% of State	State Value	Rank of 64
Incoming Tickets:	45,374	9.64%	470,716	2
Adjusted Facility Damages:	191	5.96%	3,207	60
Non-Adjusted DIRT Damages:				
Telecommunications	94	4.92%	1,911	
Natural Gas	46	5.99%	768	
Electric	27	11.69%	231	
CableTV	24	12.00%	200	
Water	NotReported	0.00%	40	
Sewer	NotReported	0.00%	17	
Pipeline	NotReported	0.00%	1	
Other	NotReported	0.00%	39	

The *Colorado Damage Prevention Report Card®* provides industry stakeholders in each county with current One-Call ticketing, underground facility damage and demographic information. This information is designed to provide knowledge of damage prevention conditions and programs in the county as well as to help facilitate improvement in public awareness and damage prevention efforts. Accurate and timely information can lead to more effective public awareness and damage prevention programs.

The *Public Awareness Metric* provides a density adjusted measure of tickets versus the population.  
 The *Damage Prevention Metric* provides a measure of adjusted facility damages versus tickets.  
 The *DIRT Reporting Metric* provides a measure DIRT damage reporting by facility type.

# Colorado County Damage Prevention Report Cards - 2009

## 2009 Colorado Damage Prevention Report Card

Colorado Damage Prevention Report Card® is evaluated and published annually by Colorado 811

Reporting Year	<b>2009</b>	
County	<b>Archuleta</b>	Note: Colorado has 64 Counties

Grading Area	Grade	Score	Rank of 64	Weight
Public Awareness Metric:	C	0.792	33	50%
Damage Prevention Metric:	A	0.555	4	25%
DIRT Reporting Metric:	D-	0.625	49	25%
Stakeholder Participation:	Not Avail 2009	Not Avail 2009	Not Avail 2009	
County Composite Grade:	C+	2.250		

Report Card Metrics				
Demographic Data	County Value	% of State	State Value	Rank of 64
Population:	12,933	0.25%	5,083,221	36
Pop Density per SqMile:	10		49	
Housing Permits:	42	0.45%	9,355	26
Net Migration:	162	0.55%	29,531	23

One-Call Data	County Value	% of State	State Value	Rank of 64
Incoming Tickets:	1,466	0.31%	470,716	34
Adjusted Facility Damages:	1	0.03%	3,207	3
Non-Adjusted DIRT Damages:				
Telecommunications	NotReported	0.00%	1,911	
Natural Gas	NotReported	0.00%	768	
Electric	NotReported	0.00%	231	
CableTV	NotReported	0.00%	200	
Water	NotReported	0.00%	40	
Sewer	1	5.88%	17	
Pipeline	NotReported	0.00%	1	
Other	NotReported	0.00%	39	

The *Colorado Damage Prevention Report Card®* provides industry stakeholders in each county with current One-Call ticketing, underground facility damage and demographic information. This information is designed to provide knowledge of damage prevention conditions and programs in the county as well as to help facilitate improvement in public awareness and damage prevention efforts. Accurate and timely information can lead to more effective public awareness and damage prevention programs.

The *Public Awareness Metric* provides a density adjusted measure of tickets versus the population.  
 The *Damage Prevention Metric* provides a measure of adjusted facility damages versus tickets.  
 The *DIRT Reporting Metric* provides a measure DIRT damage reporting by facility type.

# Colorado County Damage Prevention Report Cards - 2009

## 2009 Colorado Damage Prevention Report Card

Colorado Damage Prevention Report Card® is evaluated and published annually by Colorado 811

Reporting Year	<b>2009</b>	Note: Colorado has 64 Counties
County	<b>Baca</b>	

Grading Area	Grade	Score	Rank of 64	Weight
Public Awareness Metric:	D	0.726	54	50%
Damage Prevention Metric:	B-	2.364	18	25%
DIRT Reporting Metric:	D	1.000	40	25%
Stakeholder Participation:	Not Avail 2009	Not Avail 2009	Not Avail 2009	
County Composite Grade:	C-	1.583		

### Report Card Metrics

Demographic Data	County Value	% of State	State Value	Rank of 64
Population:	4,133	0.08%	5,083,221	55
Pop Density per SqMile:	2		49	
Housing Permits:	1	0.01%	9,355	56
Net Migration:	0	0.00%	29,531	48

One-Call Data	County Value	% of State	State Value	Rank of 64
Incoming Tickets:	406	0.09%	470,716	53
Adjusted Facility Damages:	1	0.03%	3,207	3
Non-Adjusted DIRT Damages:				
Telecommunications	NotReported	0.00%	1,911	
Natural Gas	1	0.13%	768	
Electric	NotReported	0.00%	231	
CableTV	NotReported	0.00%	200	
Water	NotReported	0.00%	40	
Sewer	NotReported	0.00%	17	
Pipeline	NotReported	0.00%	1	
Other	NotReported	0.00%	39	

The *Colorado Damage Prevention Report Card®* provides industry stakeholders in each county with current One-Call ticketing, underground facility damage and demographic information. This information is designed to provide knowledge of damage prevention conditions and programs in the county as well as to help facilitate improvement in public awareness and damage prevention efforts. Accurate and timely information can lead to more effective public awareness and damage prevention programs.

The *Public Awareness Metric* provides a density adjusted measure of tickets versus the population.  
 The *Damage Prevention Metric* provides a measure of adjusted facility damages versus tickets.  
 The *DIRT Reporting Metric* provides a measure DIRT damage reporting by facility type.

# Colorado County Damage Prevention Report Cards - 2009

## 2009 Colorado Damage Prevention Report Card

Colorado Damage Prevention Report Card® is evaluated and published annually by Colorado 811

Reporting Year	<b>2009</b>	Note: Colorado has 64 Counties
County	<b>Bent</b>	

Grading Area	Grade	Score	Rank of 64	Weight
Public Awareness Metric:	D	0.739	51	50%
Damage Prevention Metric:	C+	3.137	23	25%
DIRT Reporting Metric:	D	1.000	40	25%
Stakeholder Participation:	Not Avail 2009	Not Avail 2009	Not Avail 2009	
County Composite Grade:	C-	1.500		

### Report Card Metrics

Demographic Data	County Value	% of State	State Value	Rank of 64
Population:	6,213	0.12%	5,083,221	48
Pop Density per SqMile:	4		49	
Housing Permits:	3	0.03%	9,355	54
Net Migration:	49	0.17%	29,531	32

One-Call Data	County Value	% of State	State Value	Rank of 64
Incoming Tickets:	566	0.12%	470,716	46
Adjusted Facility Damages:	2	0.06%	3,207	15
Non-Adjusted DIRT Damages:				
Telecommunications	NotReported	0.00%	1,911	
Natural Gas	2	0.26%	768	
Electric	NotReported	0.00%	231	
CableTV	NotReported	0.00%	200	
Water	NotReported	0.00%	40	
Sewer	NotReported	0.00%	17	
Pipeline	NotReported	0.00%	1	
Other	NotReported	0.00%	39	

The *Colorado Damage Prevention Report Card®* provides industry stakeholders in each county with current One-Call ticketing, underground facility damage and demographic information. This information is designed to provide knowledge of damage prevention conditions and programs in the county as well as to help facilitate improvement in public awareness and damage prevention efforts. Accurate and timely information can lead to more effective public awareness and damage prevention programs.

The *Public Awareness Metric* provides a density adjusted measure of tickets versus the population.  
 The *Damage Prevention Metric* provides a measure of adjusted facility damages versus tickets.  
 The *DIRT Reporting Metric* provides a measure DIRT damage reporting by facility type.

# Colorado County Damage Prevention Report Cards - 2009

## 2009 Colorado Damage Prevention Report Card

Colorado Damage Prevention Report Card® is evaluated and published annually by Colorado 811

Reporting Year	<b>2009</b>	Note: Colorado has 64 Counties
County	<b>Boulder</b>	

Grading Area	Grade	Score	Rank of 64	Weight
Public Awareness Metric:	B	0.862	9	50%
Damage Prevention Metric:	B	1.984	14	25%
DIRT Reporting Metric:	B-	2.750	10	25%
Stakeholder Participation:	Not Avail 2009	Not Avail 2009	Not Avail 2009	
County Composite Grade:	B	3.083		

Report Card Metrics				
Demographic Data	County Value	% of State	State Value	Rank of 64
Population:	301,804	5.94%	5,083,221	6
Pop Density per SqMile:	408		49	
Housing Permits:	345	3.69%	9,355	11
Net Migration:	918	3.11%	29,531	11

One-Call Data	County Value	% of State	State Value	Rank of 64
Incoming Tickets:	27,628	5.87%	470,716	8
Adjusted Facility Damages:	105	3.27%	3,207	54
Non-Adjusted DIRT Damages:				
Telecommunications	71	3.72%	1,911	
Natural Gas	19	2.47%	768	
Electric	9	3.90%	231	
CableTV	6	3.00%	200	
Water	NotReported	0.00%	40	
Sewer	NotReported	0.00%	17	
Pipeline	NotReported	0.00%	1	
Other	NotReported	0.00%	39	

The Colorado Damage Prevention Report Card® provides industry stakeholders in each county with current One-Call ticketing, underground facility damage and demographic information. This information is designed to provide knowledge of damage prevention conditions and programs in the county as well as to help facilitate improvement in public awareness and damage prevention efforts. Accurate and timely information can lead to more effective public awareness and damage prevention programs.

The Public Awareness Metric provides a density adjusted measure of tickets versus the population.  
 The Damage Prevention Metric provides a measure of adjusted facility damages versus tickets.  
 The DIRT Reporting Metric provides a measure DIRT damage reporting by facility type.

# Colorado County Damage Prevention Report Cards - 2009

## 2009 Colorado Damage Prevention Report Card

Colorado Damage Prevention Report Card® is evaluated and published annually by Colorado 811

Reporting Year	<b>2009</b>	
County	<b>Broomfield</b>	Note: Colorado has 64 Counties

Grading Area	Grade	Score	Rank of 64	Weight
Public Awareness Metric:	B+	0.873	6	50%
Damage Prevention Metric:	B+	1.542	8	25%
DIRT Reporting Metric:	D-	0.750	47	25%
Stakeholder Participation:	Not Avail 2009	Not Avail 2009	Not Avail 2009	
County Composite Grade:	B	2.833		

Report Card Metrics				
Demographic Data	County Value	% of State	State Value	Rank of 64
Population:	57,411	1.13%	5,083,221	13
Pop Density per SqMile:	1,689		49	
Housing Permits:	160	1.71%	9,355	13
Net Migration:	2,154	7.29%	29,531	5

One-Call Data	County Value	% of State	State Value	Rank of 64
Incoming Tickets:	6,370	1.35%	470,716	15
Adjusted Facility Damages:	22	0.69%	3,207	39
Non-Adjusted DIRT Damages:				
Telecommunications	16	0.84%	1,911	
Natural Gas	NotReported	0.00%	768	
Electric	NotReported	0.00%	231	
CableTV	6	3.00%	200	
Water	NotReported	0.00%	40	
Sewer	NotReported	0.00%	17	
Pipeline	NotReported	0.00%	1	
Other	NotReported	0.00%	39	

The *Colorado Damage Prevention Report Card®* provides industry stakeholders in each county with current One-Call ticketing, underground facility damage and demographic information. This information is designed to provide knowledge of damage prevention conditions and programs in the county as well as to help facilitate improvement in public awareness and damage prevention efforts. Accurate and timely information can lead to more effective public awareness and damage prevention programs.

The *Public Awareness Metric* provides a density adjusted measure of tickets versus the population.

The *Damage Prevention Metric* provides a measure of adjusted facility damages versus tickets.

The *DIRT Reporting Metric* provides a measure DIRT damage reporting by facility type.

# Colorado County Damage Prevention Report Cards - 2009

## 2009 Colorado Damage Prevention Report Card

Colorado Damage Prevention Report Card® is evaluated and published annually by Colorado 811

Reporting Year	<b>2009</b>	Note: Colorado has 64 Counties
County	<b>Chaffee</b>	

Grading Area	Grade	Score	Rank of 64	Weight
Public Awareness Metric:	C	0.794	32	50%
Damage Prevention Metric:	C-	9.480	49	25%
DIRT Reporting Metric:	B	3.000	6	25%
Stakeholder Participation:	Not Avail 2009	Not Avail 2009	Not Avail 2009	
County Composite Grade:	C+	2.333		

Report Card Metrics				
Demographic Data	County Value	% of State	State Value	Rank of 64
Population:	17,279	0.34%	5,083,221	27
Pop Density per SqMile:	17		49	
Housing Permits:	91	0.97%	9,355	17
Net Migration:	163	0.55%	29,531	22

One-Call Data	County Value	% of State	State Value	Rank of 64
Incoming Tickets:	1,769	0.38%	470,716	32
Adjusted Facility Damages:	22	0.69%	3,207	39
Non-Adjusted DIRT Damages:				
Telecommunications	7	0.37%	1,911	
Natural Gas	11	1.43%	768	
Electric	3	1.30%	231	
CableTV	NotReported	0.00%	200	
Water	1	2.50%	40	
Sewer	NotReported	0.00%	17	
Pipeline	NotReported	0.00%	1	
Other	NotReported	0.00%	39	

The Colorado Damage Prevention Report Card® provides industry stakeholders in each county with current One-Call ticketing, underground facility damage and demographic information. This information is designed to provide knowledge of damage prevention conditions and programs in the county as well as to help facilitate improvement in public awareness and damage prevention efforts. Accurate and timely information can lead to more effective public awareness and damage prevention programs.

The Public Awareness Metric provides a density adjusted measure of tickets versus the population.  
 The Damage Prevention Metric provides a measure of adjusted facility damages versus tickets.  
 The DIRT Reporting Metric provides a measure DIRT damage reporting by facility type.

# Colorado County Damage Prevention Report Cards - 2009

## 2009 Colorado Damage Prevention Report Card

Colorado Damage Prevention Report Card® is evaluated and published annually by Colorado 811

Reporting Year	<b>2009</b>	Note: Colorado has 64 Counties
County	<b>Cheyenne</b>	

Grading Area	Grade	Score	Rank of 64	Weight
Public Awareness Metric:	C-	0.761	40	50%
Damage Prevention Metric:	C-	9.210	46	25%
DIRT Reporting Metric:	F	0.250	58	25%
Stakeholder Participation:	Not Avail 2009	Not Avail 2009	Not Avail 2009	
County Composite Grade:	C-	1.500		

Report Card Metrics				
Demographic Data	County Value	% of State	State Value	Rank of 64
Population:	2,006	0.04%	5,083,221	59
Pop Density per SqMile:	1		49	
Housing Permits:	0	0.00%	9,355	62
Net Migration:	1	0.00%	29,531	47

One-Call Data	County Value	% of State	State Value	Rank of 64
Incoming Tickets:	321	0.07%	470,716	55
Adjusted Facility Damages:	3	0.09%	3,207	21
Non-Adjusted DIRT Damages:				
Telecommunications	NotReported	0.00%	1,911	
Natural Gas	NotReported	0.00%	768	
Electric	NotReported	0.00%	231	
CableTV	NotReported	0.00%	200	
Water	NotReported	0.00%	40	
Sewer	NotReported	0.00%	17	
Pipeline	NotReported	0.00%	1	
Other	3	7.69%	39	

The *Colorado Damage Prevention Report Card®* provides industry stakeholders in each county with current One-Call ticketing, underground facility damage and demographic information. This information is designed to provide knowledge of damage prevention conditions and programs in the county as well as to help facilitate improvement in public awareness and damage prevention efforts. Accurate and timely information can lead to more effective public awareness and damage prevention programs.

The *Public Awareness Metric* provides a density adjusted measure of tickets versus the population.  
 The *Damage Prevention Metric* provides a measure of adjusted facility damages versus tickets.  
 The *DIRT Reporting Metric* provides a measure DIRT damage reporting by facility type.



# Colorado County Damage Prevention Report Cards - 2009

## 2009 Colorado Damage Prevention Report Card

Colorado Damage Prevention Report Card® is evaluated and published annually by Colorado 811

Reporting Year	<b>2009</b>	
County	<b>Clear Creek</b>	Note: Colorado has 64 Counties

Grading Area	Grade	Score	Rank of 64	Weight
Public Awareness Metric:	C+	0.837	19	50%
Damage Prevention Metric:	B	1.889	13	25%
DIRT Reporting Metric:	D+	1.375	27	25%
Stakeholder Participation:	Not Avail 2009	Not Avail 2009	Not Avail 2009	
County Composite Grade:	C+	2.417		

Report Card Metrics				
Demographic Data	County Value	% of State	State Value	Rank of 64
Population:	9,427	0.19%	5,083,221	39
Pop Density per SqMile:	24		49	
Housing Permits:	8	0.09%	9,355	46
Net Migration:	(49)	-0.17%	29,531	55

One-Call Data	County Value	% of State	State Value	Rank of 64
Incoming Tickets:	1,553	0.33%	470,716	33
Adjusted Facility Damages:	4	0.12%	3,207	23
Non-Adjusted DIRT Damages:				
Telecommunications	1	0.05%	1,911	
Natural Gas	3	0.39%	768	
Electric	NotReported	0.00%	231	
CableTV	NotReported	0.00%	200	
Water	NotReported	0.00%	40	
Sewer	NotReported	0.00%	17	
Pipeline	NotReported	0.00%	1	
Other	NotReported	0.00%	39	

The *Colorado Damage Prevention Report Card®* provides industry stakeholders in each county with current One-Call ticketing, underground facility damage and demographic information. This information is designed to provide knowledge of damage prevention conditions and programs in the county as well as to help facilitate improvement in public awareness and damage prevention efforts. Accurate and timely information can lead to more effective public awareness and damage prevention programs.

The *Public Awareness Metric* provides a density adjusted measure of tickets versus the population.

The *Damage Prevention Metric* provides a measure of adjusted facility damages versus tickets.

The *DIRT Reporting Metric* provides a measure DIRT damage reporting by facility type.

# Colorado County Damage Prevention Report Cards - 2009

## 2009 Colorado Damage Prevention Report Card

Colorado Damage Prevention Report Card® is evaluated and published annually by Colorado 811

Reporting Year	<b>2009</b>	Note: Colorado has 64 Counties
County	<b>Conejos</b>	

Grading Area	Grade	Score	Rank of 64	Weight
Public Awareness Metric:	F	0.695	59	50%
Damage Prevention Metric:	B	1.873	12	25%
DIRT Reporting Metric:	D	1.000	40	25%
Stakeholder Participation:	Not Avail 2009	Not Avail 2009	Not Avail 2009	
County Composite Grade:	D+	1.333		

Report Card Metrics				
Demographic Data	County Value	% of State	State Value	Rank of 64
Population:	8,414	0.17%	5,083,221	41
Pop Density per SqMile:	7		49	
Housing Permits:	17	0.18%	9,355	39
Net Migration:	(25)	-0.08%	29,531	52

One-Call Data	County Value	% of State	State Value	Rank of 64
Incoming Tickets:	452	0.10%	470,716	50
Adjusted Facility Damages:	1	0.03%	3,207	3
Non-Adjusted DIRT Damages:				
Telecommunications	NotReported	0.00%	1,911	
Natural Gas	1	0.13%	768	
Electric	NotReported	0.00%	231	
CableTV	NotReported	0.00%	200	
Water	NotReported	0.00%	40	
Sewer	NotReported	0.00%	17	
Pipeline	NotReported	0.00%	1	
Other	NotReported	0.00%	39	

The *Colorado Damage Prevention Report Card®* provides industry stakeholders in each county with current One-Call ticketing, underground facility damage and demographic information. This information is designed to provide knowledge of damage prevention conditions and programs in the county as well as to help facilitate improvement in public awareness and damage prevention efforts. Accurate and timely information can lead to more effective public awareness and damage prevention programs.

The *Public Awareness Metric* provides a density adjusted measure of tickets versus the population.  
 The *Damage Prevention Metric* provides a measure of adjusted facility damages versus tickets.  
 The *DIRT Reporting Metric* provides a measure DIRT damage reporting by facility type.

# Colorado County Damage Prevention Report Cards - 2009

## 2009 Colorado Damage Prevention Report Card

Colorado Damage Prevention Report Card® is evaluated and published annually by Colorado 811

Reporting Year	<b>2009</b>	Note: Colorado has 64 Counties
County	<b>Costilla</b>	

Grading Area	Grade	Score	Rank of 64	Weight
Public Awareness Metric:	F	0.665	61	50%
Damage Prevention Metric:	C-	8.813	44	25%
DIRT Reporting Metric:	F	0.250	58	25%
Stakeholder Participation:	Not Avail 2009	Not Avail 2009	Not Avail 2009	
County Composite Grade:	D	0.833		

Report Card Metrics				
Demographic Data	County Value	% of State	State Value	Rank of 64
Population:	3,488	0.07%	5,083,221	56
Pop Density per SqMile:	3		49	
Housing Permits:	34	0.36%	9,355	31
Net Migration:	(7)	-0.02%	29,531	50

One-Call Data	County Value	% of State	State Value	Rank of 64
Incoming Tickets:	208	0.04%	470,716	58
Adjusted Facility Damages:	2	0.06%	3,207	15
Non-Adjusted DIRT Damages:				
Telecommunications	NotReported	0.00%	1,911	
Natural Gas	NotReported	0.00%	768	
Electric	NotReported	0.00%	231	
CableTV	NotReported	0.00%	200	
Water	NotReported	0.00%	40	
Sewer	NotReported	0.00%	17	
Pipeline	NotReported	0.00%	1	
Other	2	5.13%	39	

The *Colorado Damage Prevention Report Card®* provides industry stakeholders in each county with current One-Call ticketing, underground facility damage and demographic information. This information is designed to provide knowledge of damage prevention conditions and programs in the county as well as to help facilitate improvement in public awareness and damage prevention efforts. Accurate and timely information can lead to more effective public awareness and damage prevention programs.

The *Public Awareness Metric* provides a density adjusted measure of tickets versus the population.  
 The *Damage Prevention Metric* provides a measure of adjusted facility damages versus tickets.  
 The *DIRT Reporting Metric* provides a measure DIRT damage reporting by facility type.

# Colorado County Damage Prevention Report Cards - 2009

## 2009 Colorado Damage Prevention Report Card

Colorado Damage Prevention Report Card® is evaluated and published annually by Colorado 811

Reporting Year	<b>2009</b>	
County	<b>Crowley</b>	Note: Colorado has 64 Counties

Grading Area	Grade	Score	Rank of 64	Weight
Public Awareness Metric:	F	0.630	63	50%
Damage Prevention Metric:	A+	0.000	1	25%
DIRT Reporting Metric:	A	4.000	3	25%
Stakeholder Participation:	Not Avail 2009	Not Avail 2009	Not Avail 2009	
County Composite Grade:	C+	2.208		

Report Card Metrics				
Demographic Data	County Value	% of State	State Value	Rank of 64
Population:	6,284	0.12%	5,083,221	47
Pop Density per SqMile:	8		49	
Housing Permits:	1	0.01%	9,355	56
Net Migration:	48	0.16%	29,531	34

One-Call Data	County Value	% of State	State Value	Rank of 64
Incoming Tickets:	206	0.04%	470,716	59
Adjusted Facility Damages:	NoDamages	0.00%	3,207	1
Non-Adjusted DIRT Damages:				
Telecommunications	NotReported	0.00%	1,911	
Natural Gas	NotReported	0.00%	768	
Electric	NotReported	0.00%	231	
CableTV	NotReported	0.00%	200	
Water	NotReported	0.00%	40	
Sewer	NotReported	0.00%	17	
Pipeline	NotReported	0.00%	1	
Other	NotReported	0.00%	39	

The Colorado Damage Prevention Report Card® provides industry stakeholders in each county with current One-Call ticketing, underground facility damage and demographic information. This information is designed to provide knowledge of damage prevention conditions and programs in the county as well as to help facilitate improvement in public awareness and damage prevention efforts. Accurate and timely information can lead to more effective public awareness and damage prevention programs.

The Public Awareness Metric provides a density adjusted measure of tickets versus the population.  
 The Damage Prevention Metric provides a measure of adjusted facility damages versus tickets.  
 The DIRT Reporting Metric provides a measure DIRT damage reporting by facility type.

# Colorado County Damage Prevention Report Cards - 2009

## 2009 Colorado Damage Prevention Report Card

Colorado Damage Prevention Report Card® is evaluated and published annually by Colorado 811

Reporting Year	<b>2009</b>	Note: Colorado has 64 Counties
County	<b>Custer</b>	

Grading Area	Grade	Score	Rank of 64	Weight
Public Awareness Metric:	D+	0.755	44	50%
Damage Prevention Metric:	B	1.830	11	25%
DIRT Reporting Metric:	F	0.375	50	25%
Stakeholder Participation:	Not Avail 2009	Not Avail 2009	Not Avail 2009	
County Composite Grade:	C-	1.667		

Report Card Metrics				
Demographic Data	County Value	% of State	State Value	Rank of 64
Population:	4,210	0.08%	5,083,221	54
Pop Density per SqMile:	6		49	
Housing Permits:	60	0.64%	9,355	23
Net Migration:	92	0.31%	29,531	30

One-Call Data	County Value	% of State	State Value	Rank of 64
Incoming Tickets:	469	0.10%	470,716	49
Adjusted Facility Damages:	1	0.03%	3,207	3
Non-Adjusted DIRT Damages:				
Telecommunications	1	0.05%	1,911	
Natural Gas	NotReported	0.00%	768	
Electric	NotReported	0.00%	231	
CableTV	NotReported	0.00%	200	
Water	NotReported	0.00%	40	
Sewer	NotReported	0.00%	17	
Pipeline	NotReported	0.00%	1	
Other	NotReported	0.00%	39	

The *Colorado Damage Prevention Report Card®* provides industry stakeholders in each county with current One-Call ticketing, underground facility damage and demographic information. This information is designed to provide knowledge of damage prevention conditions and programs in the county as well as to help facilitate improvement in public awareness and damage prevention efforts. Accurate and timely information can lead to more effective public awareness and damage prevention programs.

The *Public Awareness Metric* provides a density adjusted measure of tickets versus the population.  
 The *Damage Prevention Metric* provides a measure of adjusted facility damages versus tickets.  
 The *DIRT Reporting Metric* provides a measure DIRT damage reporting by facility type.

# Colorado County Damage Prevention Report Cards - 2009

## 2009 Colorado Damage Prevention Report Card

Colorado Damage Prevention Report Card® is evaluated and published annually by Colorado 811

Reporting Year	<b>2009</b>	
County	<b>Delta</b>	Note: Colorado has 64 Counties

Grading Area	Grade	Score	Rank of 64	Weight
Public Awareness Metric:	C-	0.788	35	50%
Damage Prevention Metric:	C-	9.275	47	25%
DIRT Reporting Metric:	D+	1.375	27	25%
Stakeholder Participation:	Not Avail 2009	Not Avail 2009	Not Avail 2009	
County Composite Grade:	C-	1.750		

Report Card Metrics				
Demographic Data	County Value	% of State	State Value	Rank of 64
Population:	32,071	0.63%	5,083,221	18
Pop Density per SqMile:	28		49	
Housing Permits:	13	0.14%	9,355	44
Net Migration:	420	1.42%	29,531	16

One-Call Data	County Value	% of State	State Value	Rank of 64
Incoming Tickets:	2,560	0.54%	470,716	26
Adjusted Facility Damages:	33	1.03%	3,207	43
Non-Adjusted DIRT Damages:				
Telecommunications	14	0.73%	1,911	
Natural Gas	19	2.47%	768	
Electric	NotReported	0.00%	231	
CableTV	NotReported	0.00%	200	
Water	NotReported	0.00%	40	
Sewer	NotReported	0.00%	17	
Pipeline	NotReported	0.00%	1	
Other	NotReported	0.00%	39	

The Colorado Damage Prevention Report Card® provides industry stakeholders in each county with current One-Call ticketing, underground facility damage and demographic information. This information is designed to provide knowledge of damage prevention conditions and programs in the county as well as to help facilitate improvement in public awareness and damage prevention efforts. Accurate and timely information can lead to more effective public awareness and damage prevention programs.

The Public Awareness Metric provides a density adjusted measure of tickets versus the population.  
 The Damage Prevention Metric provides a measure of adjusted facility damages versus tickets.  
 The DIRT Reporting Metric provides a measure DIRT damage reporting by facility type.

# Colorado County Damage Prevention Report Cards - 2009

## 2009 Colorado Damage Prevention Report Card

Colorado Damage Prevention Report Card® is evaluated and published annually by Colorado 811

Reporting Year	<b>2009</b>	Note: Colorado has 64 Counties
County	<b>Denver</b>	

Grading Area	Grade	Score	Rank of 64	Weight
Public Awareness Metric:	B-	0.857	11	50%
Damage Prevention Metric:	B+	1.325	7	25%
DIRT Reporting Metric:	B-	2.750	10	25%
Stakeholder Participation:	Not Avail 2009	Not Avail 2009	Not Avail 2009	
County Composite Grade:	B	3.000		

Report Card Metrics				
Demographic Data	County Value	% of State	State Value	Rank of 64
Population:	622,107	12.24%	5,083,221	1
Pop Density per SqMile:	3,988		49	
Housing Permits:	888	9.49%	9,355	3
Net Migration:	4,497	15.23%	29,531	1

One-Call Data	County Value	% of State	State Value	Rank of 64
Incoming Tickets:	37,986	8.07%	470,716	4
Adjusted Facility Damages:	123	3.84%	3,207	55
Non-Adjusted DIRT Damages:				
Telecommunications	52	2.72%	1,911	
Natural Gas	41	5.34%	768	
Electric	13	5.63%	231	
CableTV	17	8.50%	200	
Water	NotReported	0.00%	40	
Sewer	NotReported	0.00%	17	
Pipeline	NotReported	0.00%	1	
Other	NotReported	0.00%	39	

The *Colorado Damage Prevention Report Card®* provides industry stakeholders in each county with current One-Call ticketing, underground facility damage and demographic information. This information is designed to provide knowledge of damage prevention conditions and programs in the county as well as to help facilitate improvement in public awareness and damage prevention efforts. Accurate and timely information can lead to more effective public awareness and damage prevention programs.

The *Public Awareness Metric* provides a density adjusted measure of tickets versus the population.  
 The *Damage Prevention Metric* provides a measure of adjusted facility damages versus tickets.  
 The *DIRT Reporting Metric* provides a measure DIRT damage reporting by facility type.

# Colorado County Damage Prevention Report Cards - 2009

## 2009 Colorado Damage Prevention Report Card

Colorado Damage Prevention Report Card® is evaluated and published annually by Colorado 811

Reporting Year	<b>2009</b>	Note: Colorado has 64 Counties
County	<b>Dolores</b>	

Grading Area	Grade	Score	Rank of 64	Weight
Public Awareness Metric:	D	0.734	52	50%
Damage Prevention Metric:	F	41.237	64	25%
DIRT Reporting Metric:	D+	1.375	27	25%
Stakeholder Participation:	Not Avail 2009	Not Avail 2009	Not Avail 2009	
County Composite Grade:	D	1.083		

### Report Card Metrics

Demographic Data	County Value	% of State	State Value	Rank of 64
Population:	2,029	0.04%	5,083,221	58
Pop Density per SqMile:	2		49	
Housing Permits:	1	0.01%	9,355	56
Net Migration:	6	0.02%	29,531	45

One-Call Data	County Value	% of State	State Value	Rank of 64
Incoming Tickets:	253	0.05%	470,716	57
Adjusted Facility Damages:	11	0.34%	3,207	30
Non-Adjusted DIRT Damages:				
Telecommunications	9	0.47%	1,911	
Natural Gas	2	0.26%	768	
Electric	NotReported	0.00%	231	
CableTV	NotReported	0.00%	200	
Water	NotReported	0.00%	40	
Sewer	NotReported	0.00%	17	
Pipeline	NotReported	0.00%	1	
Other	NotReported	0.00%	39	

The *Colorado Damage Prevention Report Card®* provides industry stakeholders in each county with current One-Call ticketing, underground facility damage and demographic information. This information is designed to provide knowledge of damage prevention conditions and programs in the county as well as to help facilitate improvement in public awareness and damage prevention efforts. Accurate and timely information can lead to more effective public awareness and damage prevention programs.

The *Public Awareness Metric* provides a density adjusted measure of tickets versus the population.  
 The *Damage Prevention Metric* provides a measure of adjusted facility damages versus tickets.  
 The *DIRT Reporting Metric* provides a measure DIRT damage reporting by facility type.



# Colorado County Damage Prevention Report Cards - 2009

## 2009 Colorado Damage Prevention Report Card

Colorado Damage Prevention Report Card® is evaluated and published annually by Colorado 811

Reporting Year	<b>2009</b>	
County	<b>Douglas</b>	Note: Colorado has 64 Counties

Grading Area	Grade	Score	Rank of 64	Weight
Public Awareness Metric:	B	0.861	10	50%
Damage Prevention Metric:	C+	3.351	25	25%
DIRT Reporting Metric:	B-	2.750	10	25%
Stakeholder Participation:	Not Avail 2009	Not Avail 2009	Not Avail 2009	
County Composite Grade:	B	2.917		

Report Card Metrics				
Demographic Data	County Value	% of State	State Value	Rank of 64
Population:	289,445	5.69%	5,083,221	8
Pop Density per SqMile:	344		49	
Housing Permits:	851	9.10%	9,355	4
Net Migration:	1,988	6.73%	29,531	7

One-Call Data	County Value	% of State	State Value	Rank of 64
Incoming Tickets:	26,845	5.70%	470,716	9
Adjusted Facility Damages:	169	5.27%	3,207	59
Non-Adjusted DIRT Damages:				
Telecommunications	115	6.02%	1,911	
Natural Gas	36	4.69%	768	
Electric	5	2.16%	231	
CableTV	13	6.50%	200	
Water	NotReported	0.00%	40	
Sewer	NotReported	0.00%	17	
Pipeline	NotReported	0.00%	1	
Other	NotReported	0.00%	39	

The *Colorado Damage Prevention Report Card®* provides industry stakeholders in each county with current One-Call ticketing, underground facility damage and demographic information. This information is designed to provide knowledge of damage prevention conditions and programs in the county as well as to help facilitate improvement in public awareness and damage prevention efforts. Accurate and timely information can lead to more effective public awareness and damage prevention programs.

The *Public Awareness Metric* provides a density adjusted measure of tickets versus the population.

The *Damage Prevention Metric* provides a measure of adjusted facility damages versus tickets.

The *DIRT Reporting Metric* provides a measure DIRT damage reporting by facility type.

# Colorado County Damage Prevention Report Cards - 2009

## 2009 Colorado Damage Prevention Report Card

Colorado Damage Prevention Report Card® is evaluated and published annually by Colorado 811

Reporting Year	<b>2009</b>	Note: Colorado has 64 Counties
County	<b>Eagle</b>	

Grading Area	Grade	Score	Rank of 64	Weight
Public Awareness Metric:	C	0.801	28	50%
Damage Prevention Metric:	C-	8.860	45	25%
DIRT Reporting Metric:	B-	2.750	10	25%
Stakeholder Participation:	Not Avail 2009	Not Avail 2009	Not Avail 2009	
County Composite Grade:	C+	2.250		

Report Card Metrics				
Demographic Data	County Value	% of State	State Value	Rank of 64
Population:	55,269	1.09%	5,083,221	14
Pop Density per SqMile:	32		49	
Housing Permits:	78	0.83%	9,355	19
Net Migration:	457	1.55%	29,531	15

One-Call Data	County Value	% of State	State Value	Rank of 64
Incoming Tickets:	4,466	0.95%	470,716	17
Adjusted Facility Damages:	56	1.75%	3,207	48
Non-Adjusted DIRT Damages:				
Telecommunications	34	1.78%	1,911	
Natural Gas	11	1.43%	768	
Electric	7	3.03%	231	
CableTV	4	2.00%	200	
Water	NotReported	0.00%	40	
Sewer	NotReported	0.00%	17	
Pipeline	NotReported	0.00%	1	
Other	NotReported	0.00%	39	

The Colorado Damage Prevention Report Card® provides industry stakeholders in each county with current One-Call ticketing, underground facility damage and demographic information. This information is designed to provide knowledge of damage prevention conditions and programs in the county as well as to help facilitate improvement in public awareness and damage prevention efforts. Accurate and timely information can lead to more effective public awareness and damage prevention programs.

The Public Awareness Metric provides a density adjusted measure of tickets versus the population.  
 The Damage Prevention Metric provides a measure of adjusted facility damages versus tickets.  
 The DIRT Reporting Metric provides a measure DIRT damage reporting by facility type.

# Colorado County Damage Prevention Report Cards - 2009

## 2009 Colorado Damage Prevention Report Card

Colorado Damage Prevention Report Card® is evaluated and published annually by Colorado 811

Reporting Year	<b>2009</b>	
County	<b>El Paso</b>	Note: Colorado has 64 Counties

Grading Area	Grade	Score	Rank of 64	Weight
Public Awareness Metric:	B+	0.874	5	50%
Damage Prevention Metric:	C+	5.476	33	25%
DIRT Reporting Metric:	A+	4.250	1	25%
Stakeholder Participation:	Not Avail 2009	Not Avail 2009	Not Avail 2009	
County Composite Grade:	B+	3.375		

Report Card Metrics				
Demographic Data	County Value	% of State	State Value	Rank of 64
Population:	605,976	11.92%	5,083,221	2
Pop Density per SqMile:	285		49	
Housing Permits:	1,333	14.25%	9,355	1
Net Migration:	3,082	10.44%	29,531	2

One-Call Data	County Value	% of State	State Value	Rank of 64
Incoming Tickets:	61,619	13.09%	470,716	1
Adjusted Facility Damages:	620	19.33%	3,207	64
Non-Adjusted DIRT Damages:				
Telecommunications	231	12.09%	1,911	
Natural Gas	215	27.99%	768	
Electric	105	45.45%	231	
CableTV	22	11.00%	200	
Water	30	75.00%	40	
Sewer	8	47.06%	17	
Pipeline	NotReported	0.00%	1	
Other	9	23.08%	39	

The *Colorado Damage Prevention Report Card®* provides industry stakeholders in each county with current One-Call ticketing, underground facility damage and demographic information. This information is designed to provide knowledge of damage prevention conditions and programs in the county as well as to help facilitate improvement in public awareness and damage prevention efforts. Accurate and timely information can lead to more effective public awareness and damage prevention programs.

The *Public Awareness Metric* provides a density adjusted measure of tickets versus the population.  
 The *Damage Prevention Metric* provides a measure of adjusted facility damages versus tickets.  
 The *DIRT Reporting Metric* provides a measure DIRT damage reporting by facility type.

# Colorado County Damage Prevention Report Cards - 2009

## 2009 Colorado Damage Prevention Report Card

Colorado Damage Prevention Report Card® is evaluated and published annually by Colorado 811

Reporting Year	<b>2009</b>	Note: Colorado has 64 Counties
County	<b>Elbert</b>	

Grading Area	Grade	Score	Rank of 64	Weight
Public Awareness Metric:	C-	0.778	37	50%
Damage Prevention Metric:	D+	12.030	55	25%
DIRT Reporting Metric:	D+	1.375	27	25%
Stakeholder Participation:	Not Avail 2009	Not Avail 2009	Not Avail 2009	
County Composite Grade:	C-	1.667		

Report Card Metrics				
Demographic Data	County Value	% of State	State Value	Rank of 64
Population:	23,310	0.46%	5,083,221	23
Pop Density per SqMile:	13		49	
Housing Permits:	39	0.42%	9,355	27
Net Migration:	(75)	-0.25%	29,531	59

One-Call Data	County Value	% of State	State Value	Rank of 64
Incoming Tickets:	1,967	0.42%	470,716	30
Adjusted Facility Damages:	30	0.94%	3,207	42
Non-Adjusted DIRT Damages:				
Telecommunications	24	1.26%	1,911	
Natural Gas	6	0.78%	768	
Electric	NotReported	0.00%	231	
CableTV	NotReported	0.00%	200	
Water	NotReported	0.00%	40	
Sewer	NotReported	0.00%	17	
Pipeline	NotReported	0.00%	1	
Other	NotReported	0.00%	39	

The *Colorado Damage Prevention Report Card®* provides industry stakeholders in each county with current One-Call ticketing, underground facility damage and demographic information. This information is designed to provide knowledge of damage prevention conditions and programs in the county as well as to help facilitate improvement in public awareness and damage prevention efforts. Accurate and timely information can lead to more effective public awareness and damage prevention programs.

The *Public Awareness Metric* provides a density adjusted measure of tickets versus the population.  
 The *Damage Prevention Metric* provides a measure of adjusted facility damages versus tickets.  
 The *DIRT Reporting Metric* provides a measure DIRT damage reporting by facility type.

# Colorado County Damage Prevention Report Cards - 2009

## 2009 Colorado Damage Prevention Report Card

Colorado Damage Prevention Report Card® is evaluated and published annually by Colorado 811

Reporting Year	<b>2009</b>	Note: Colorado has 64 Counties
County	<b>Fremont</b>	

Grading Area	Grade	Score	Rank of 64	Weight
Public Awareness Metric:	C-	0.785	36	50%
Damage Prevention Metric:	C-	9.296	48	25%
DIRT Reporting Metric:	C-	1.750	23	25%
Stakeholder Participation:	Not Avail 2009	Not Avail 2009	Not Avail 2009	
County Composite Grade:	C	1.833		

Report Card Metrics				
Demographic Data	County Value	% of State	State Value	Rank of 64
Population:	48,307	0.95%	5,083,221	16
Pop Density per SqMile:	32		49	
Housing Permits:	46	0.49%	9,355	24
Net Migration:	341	1.15%	29,531	17

One-Call Data	County Value	% of State	State Value	Rank of 64
Incoming Tickets:	3,357	0.71%	470,716	20
Adjusted Facility Damages:	44	1.37%	3,207	45
Non-Adjusted DIRT Damages:				
Telecommunications	27	1.41%	1,911	
Natural Gas	16	2.08%	768	
Electric	NotReported	0.00%	231	
CableTV	1	0.50%	200	
Water	NotReported	0.00%	40	
Sewer	NotReported	0.00%	17	
Pipeline	NotReported	0.00%	1	
Other	NotReported	0.00%	39	

The Colorado Damage Prevention Report Card® provides industry stakeholders in each county with current One-Call ticketing, underground facility damage and demographic information. This information is designed to provide knowledge of damage prevention conditions and programs in the county as well as to help facilitate improvement in public awareness and damage prevention efforts. Accurate and timely information can lead to more effective public awareness and damage prevention programs.

The Public Awareness Metric provides a density adjusted measure of tickets versus the population.  
 The Damage Prevention Metric provides a measure of adjusted facility damages versus tickets.  
 The DIRT Reporting Metric provides a measure DIRT damage reporting by facility type.

# Colorado County Damage Prevention Report Cards - 2009

## 2009 Colorado Damage Prevention Report Card

Colorado Damage Prevention Report Card® is evaluated and published annually by Colorado 811

Reporting Year	<b>2009</b>	Note: Colorado has 64 Counties
County	<b>Garfield</b>	

Grading Area	Grade	Score	Rank of 64	Weight
Public Awareness Metric:	C+	0.842	18	50%
Damage Prevention Metric:	C	7.748	39	25%
DIRT Reporting Metric:	C-	1.750	23	25%
Stakeholder Participation:	Not Avail 2009	Not Avail 2009	Not Avail 2009	
County Composite Grade:	C+	2.250		

Report Card Metrics				
Demographic Data	County Value	% of State	State Value	Rank of 64
Population:	58,377	1.15%	5,083,221	12
Pop Density per SqMile:	20		49	
Housing Permits:	78	0.83%	9,355	19
Net Migration:	638	2.16%	29,531	13

One-Call Data	County Value	% of State	State Value	Rank of 64
Incoming Tickets:	7,738	1.64%	470,716	13
Adjusted Facility Damages:	80	2.49%	3,207	52
Non-Adjusted DIRT Damages:				
Telecommunications	47	2.46%	1,911	
Natural Gas	25	3.26%	768	
Electric	NotReported	0.00%	231	
CableTV	8	4.00%	200	
Water	NotReported	0.00%	40	
Sewer	NotReported	0.00%	17	
Pipeline	NotReported	0.00%	1	
Other	NotReported	0.00%	39	

The *Colorado Damage Prevention Report Card®* provides industry stakeholders in each county with current One-Call ticketing, underground facility damage and demographic information. This information is designed to provide knowledge of damage prevention conditions and programs in the county as well as to help facilitate improvement in public awareness and damage prevention efforts. Accurate and timely information can lead to more effective public awareness and damage prevention programs.

The *Public Awareness Metric* provides a density adjusted measure of tickets versus the population.  
 The *Damage Prevention Metric* provides a measure of adjusted facility damages versus tickets.  
 The *DIRT Reporting Metric* provides a measure DIRT damage reporting by facility type.

# Colorado County Damage Prevention Report Cards - 2009

## 2009 Colorado Damage Prevention Report Card

Colorado Damage Prevention Report Card® is evaluated and published annually by Colorado 811

Reporting Year	<b>2009</b>	Note: Colorado has 64 Counties
County	<b>Gilpin</b>	

Grading Area	Grade	Score	Rank of 64	Weight
Public Awareness Metric:	C+	0.845	15	50%
Damage Prevention Metric:	A-	0.715	5	25%
DIRT Reporting Metric:	F	0.375	50	25%
Stakeholder Participation:	Not Avail 2009	Not Avail 2009	Not Avail 2009	
County Composite Grade:	C+	2.292		

### Report Card Metrics

Demographic Data	County Value	% of State	State Value	Rank of 64
Population:	5,264	0.10%	5,083,221	50
Pop Density per SqMile:	35		49	
Housing Permits:	16	0.17%	9,355	40
Net Migration:	46	0.16%	29,531	35

One-Call Data	County Value	% of State	State Value	Rank of 64
Incoming Tickets:	979	0.21%	470,716	41
Adjusted Facility Damages:	1	0.03%	3,207	3
Non-Adjusted DIRT Damages:				
Telecommunications	1	0.05%	1,911	
Natural Gas	NotReported	0.00%	768	
Electric	NotReported	0.00%	231	
CableTV	NotReported	0.00%	200	
Water	NotReported	0.00%	40	
Sewer	NotReported	0.00%	17	
Pipeline	NotReported	0.00%	1	
Other	NotReported	0.00%	39	

The *Colorado Damage Prevention Report Card®* provides industry stakeholders in each county with current One-Call ticketing, underground facility damage and demographic information. This information is designed to provide knowledge of damage prevention conditions and programs in the county as well as to help facilitate improvement in public awareness and damage prevention efforts. Accurate and timely information can lead to more effective public awareness and damage prevention programs.

The *Public Awareness Metric* provides a density adjusted measure of tickets versus the population.  
 The *Damage Prevention Metric* provides a measure of adjusted facility damages versus tickets.  
 The *DIRT Reporting Metric* provides a measure DIRT damage reporting by facility type.

# Colorado County Damage Prevention Report Cards - 2009

## 2009 Colorado Damage Prevention Report Card

Colorado Damage Prevention Report Card® is evaluated and published annually by Colorado 811

Reporting Year	<b>2009</b>	
County	<b>Grand</b>	Note: Colorado has 64 Counties

Grading Area	Grade	Score	Rank of 64	Weight
Public Awareness Metric:	C+	0.835	20	50%
Damage Prevention Metric:	D+	15.478	59	25%
DIRT Reporting Metric:	C-	1.750	23	25%
Stakeholder Participation:	Not Avail 2009	Not Avail 2009	Not Avail 2009	
County Composite Grade:	C	2.083		

Report Card Metrics				
Demographic Data	County Value	% of State	State Value	Rank of 64
Population:	14,763	0.29%	5,083,221	33
Pop Density per SqMile:	8		49	
Housing Permits:	140	1.50%	9,355	14
Net Migration:	37	0.13%	29,531	37

One-Call Data	County Value	% of State	State Value	Rank of 64
Incoming Tickets:	2,520	0.54%	470,716	27
Adjusted Facility Damages:	47	1.47%	3,207	46
Non-Adjusted DIRT Damages:				
Telecommunications	36	1.88%	1,911	
Natural Gas	9	1.17%	768	
Electric	NotReported	0.00%	231	
CableTV	2	1.00%	200	
Water	NotReported	0.00%	40	
Sewer	NotReported	0.00%	17	
Pipeline	NotReported	0.00%	1	
Other	NotReported	0.00%	39	

The *Colorado Damage Prevention Report Card®* provides industry stakeholders in each county with current One-Call ticketing, underground facility damage and demographic information. This information is designed to provide knowledge of damage prevention conditions and programs in the county as well as to help facilitate improvement in public awareness and damage prevention efforts. Accurate and timely information can lead to more effective public awareness and damage prevention programs.

The *Public Awareness Metric* provides a density adjusted measure of tickets versus the population.  
 The *Damage Prevention Metric* provides a measure of adjusted facility damages versus tickets.  
 The *DIRT Reporting Metric* provides a measure DIRT damage reporting by facility type.



# Colorado County Damage Prevention Report Cards - 2009

## 2009 Colorado Damage Prevention Report Card

Colorado Damage Prevention Report Card® is evaluated and published annually by Colorado 811

Reporting Year	<b>2009</b>	
County	<b>Gunnison</b>	Note: Colorado has 64 Counties

Grading Area	Grade	Score	Rank of 64	Weight
Public Awareness Metric:	C	0.810	26	50%
Damage Prevention Metric:	C-	10.237	51	25%
DIRT Reporting Metric:	B	3.000	6	25%
Stakeholder Participation:	Not Avail 2009	Not Avail 2009	Not Avail 2009	
County Composite Grade:	C+	2.333		

Report Card Metrics				
Demographic Data	County Value	% of State	State Value	Rank of 64
Population:	15,264	0.30%	5,083,221	32
Pop Density per SqMile:	5		49	
Housing Permits:	87	0.93%	9,355	18
Net Migration:	(107)	-0.36%	29,531	62

One-Call Data	County Value	% of State	State Value	Rank of 64
Incoming Tickets:	2,137	0.45%	470,716	28
Adjusted Facility Damages:	25	0.78%	3,207	41
Non-Adjusted DIRT Damages:				
Telecommunications	4	0.21%	1,911	
Natural Gas	14	1.82%	768	
Electric	6	2.60%	231	
CableTV	NotReported	0.00%	200	
Water	NotReported	0.00%	40	
Sewer	1	5.88%	17	
Pipeline	NotReported	0.00%	1	
Other	NotReported	0.00%	39	

The *Colorado Damage Prevention Report Card®* provides industry stakeholders in each county with current One-Call ticketing, underground facility damage and demographic information. This information is designed to provide knowledge of damage prevention conditions and programs in the county as well as to help facilitate improvement in public awareness and damage prevention efforts. Accurate and timely information can lead to more effective public awareness and damage prevention programs.

The *Public Awareness Metric* provides a density adjusted measure of tickets versus the population.  
 The *Damage Prevention Metric* provides a measure of adjusted facility damages versus tickets.  
 The *DIRT Reporting Metric* provides a measure DIRT damage reporting by facility type.

# Colorado County Damage Prevention Report Cards - 2009

## 2009 Colorado Damage Prevention Report Card

Colorado Damage Prevention Report Card® is evaluated and published annually by Colorado 811

Reporting Year	<b>2009</b>	
County	<b>Hinsdale</b>	Note: Colorado has 64 Counties

Grading Area	Grade	Score	Rank of 64	Weight
Public Awareness Metric:	D+	0.756	42	50%
Damage Prevention Metric:	D+	17.697	60	25%
DIRT Reporting Metric:	D	1.000	40	25%
Stakeholder Participation:	Not Avail 2009	Not Avail 2009	Not Avail 2009	
County Composite Grade:	D+	1.417		

Report Card Metrics				
Demographic Data	County Value	% of State	State Value	Rank of 64
Population:	886	0.02%	5,083,221	63
Pop Density per SqMile:	1		49	
Housing Permits:	9	0.10%	9,355	45
Net Migration:	14	0.05%	29,531	39

One-Call Data	County Value	% of State	State Value	Rank of 64
Incoming Tickets:	171	0.04%	470,716	62
Adjusted Facility Damages:	3	0.09%	3,207	21
Non-Adjusted DIRT Damages:				
Telecommunications	NotReported	0.00%	1,911	
Natural Gas	NotReported	0.00%	768	
Electric	3	1.30%	231	
CableTV	NotReported	0.00%	200	
Water	NotReported	0.00%	40	
Sewer	NotReported	0.00%	17	
Pipeline	NotReported	0.00%	1	
Other	NotReported	0.00%	39	

The Colorado Damage Prevention Report Card® provides industry stakeholders in each county with current One-Call ticketing, underground facility damage and demographic information. This information is designed to provide knowledge of damage prevention conditions and programs in the county as well as to help facilitate improvement in public awareness and damage prevention efforts. Accurate and timely information can lead to more effective public awareness and damage prevention programs.

The Public Awareness Metric provides a density adjusted measure of tickets versus the population.  
 The Damage Prevention Metric provides a measure of adjusted facility damages versus tickets.  
 The DIRT Reporting Metric provides a measure DIRT damage reporting by facility type.

# Colorado County Damage Prevention Report Cards - 2009

## 2009 Colorado Damage Prevention Report Card

Colorado Damage Prevention Report Card® is evaluated and published annually by Colorado 811

Reporting Year	<b>2009</b>	Note: Colorado has 64 Counties
County	<b>Huerfano</b>	

Grading Area	Grade	Score	Rank of 64	Weight
Public Awareness Metric:	C-	0.764	39	50%
Damage Prevention Metric:	C+	5.113	30	25%
DIRT Reporting Metric:	F	0.375	50	25%
Stakeholder Participation:	Not Avail 2009	Not Avail 2009	Not Avail 2009	
County Composite Grade:	C-	1.667		

Report Card Metrics				
Demographic Data	County Value	% of State	State Value	Rank of 64
Population:	8,178	0.16%	5,083,221	43
Pop Density per SqMile:	5		49	
Housing Permits:	35	0.37%	9,355	30
Net Migration:	131	0.44%	29,531	24

One-Call Data	County Value	% of State	State Value	Rank of 64
Incoming Tickets:	848	0.18%	470,716	43
Adjusted Facility Damages:	5	0.16%	3,207	24
Non-Adjusted DIRT Damages:				
Telecommunications	5	0.26%	1,911	
Natural Gas	NotReported	0.00%	768	
Electric	NotReported	0.00%	231	
CableTV	NotReported	0.00%	200	
Water	NotReported	0.00%	40	
Sewer	NotReported	0.00%	17	
Pipeline	NotReported	0.00%	1	
Other	NotReported	0.00%	39	

The Colorado Damage Prevention Report Card® provides industry stakeholders in each county with current One-Call ticketing, underground facility damage and demographic information. This information is designed to provide knowledge of damage prevention conditions and programs in the county as well as to help facilitate improvement in public awareness and damage prevention efforts. Accurate and timely information can lead to more effective public awareness and damage prevention programs.

The Public Awareness Metric provides a density adjusted measure of tickets versus the population.  
 The Damage Prevention Metric provides a measure of adjusted facility damages versus tickets.  
 The DIRT Reporting Metric provides a measure DIRT damage reporting by facility type.

# Colorado County Damage Prevention Report Cards - 2009

## 2009 Colorado Damage Prevention Report Card

Colorado Damage Prevention Report Card® is evaluated and published annually by Colorado 811

Reporting Year	<b>2009</b>	Note: Colorado has 64 Counties
County	<b>Jackson</b>	

Grading Area	Grade	Score	Rank of 64	Weight
Public Awareness Metric:	D-	0.715	56	50%
Damage Prevention Metric:	C+	5.468	32	25%
DIRT Reporting Metric:	F	0.250	58	25%
Stakeholder Participation:	Not Avail 2009	Not Avail 2009	Not Avail 2009	
County Composite Grade:	D+	1.167		

Report Card Metrics				
Demographic Data	County Value	% of State	State Value	Rank of 64
Population:	1,453	0.03%	5,083,221	61
Pop Density per SqMile:	1		49	
Housing Permits:	7	0.07%	9,355	47
Net Migration:	13	0.04%	29,531	40

One-Call Data	County Value	% of State	State Value	Rank of 64
Incoming Tickets:	183	0.04%	470,716	60
Adjusted Facility Damages:	1	0.03%	3,207	3
Non-Adjusted DIRT Damages:				
Telecommunications	NotReported	0.00%	1,911	
Natural Gas	NotReported	0.00%	768	
Electric	NotReported	0.00%	231	
CableTV	NotReported	0.00%	200	
Water	NotReported	0.00%	40	
Sewer	NotReported	0.00%	17	
Pipeline	NotReported	0.00%	1	
Other	1	2.56%	39	

The *Colorado Damage Prevention Report Card®* provides industry stakeholders in each county with current One-Call ticketing, underground facility damage and demographic information. This information is designed to provide knowledge of damage prevention conditions and programs in the county as well as to help facilitate improvement in public awareness and damage prevention efforts. Accurate and timely information can lead to more effective public awareness and damage prevention programs.

The *Public Awareness Metric* provides a density adjusted measure of tickets versus the population.  
 The *Damage Prevention Metric* provides a measure of adjusted facility damages versus tickets.  
 The *DIRT Reporting Metric* provides a measure DIRT damage reporting by facility type.

# Colorado County Damage Prevention Report Cards - 2009

## 2009 Colorado Damage Prevention Report Card

Colorado Damage Prevention Report Card® is evaluated and published annually by Colorado 811

Reporting Year	<b>2009</b>	Note: Colorado has 64 Counties
County	<b>Jefferson</b>	

Grading Area	Grade	Score	Rank of 64	Weight
Public Awareness Metric:	B-	0.854	13	50%
Damage Prevention Metric:	B-	2.588	19	25%
DIRT Reporting Metric:	B-	2.750	10	25%
Stakeholder Participation:	Not Avail 2009	Not Avail 2009	Not Avail 2009	
County Composite Grade:	B	2.833		

Report Card Metrics				
Demographic Data	County Value	% of State	State Value	Rank of 64
Population:	547,728	10.78%	5,083,221	4
Pop Density per SqMile:	709		49	
Housing Permits:	379	4.05%	9,355	8
Net Migration:	2,009	6.80%	29,531	6

One-Call Data	County Value	% of State	State Value	Rank of 64
Incoming Tickets:	39,025	8.29%	470,716	3
Adjusted Facility Damages:	206	6.42%	3,207	62
Non-Adjusted DIRT Damages:				
Telecommunications	128	6.70%	1,911	
Natural Gas	25	3.26%	768	
Electric	12	5.19%	231	
CableTV	41	20.50%	200	
Water	NotReported	0.00%	40	
Sewer	NotReported	0.00%	17	
Pipeline	NotReported	0.00%	1	
Other	NotReported	0.00%	39	

The Colorado Damage Prevention Report Card® provides industry stakeholders in each county with current One-Call ticketing, underground facility damage and demographic information. This information is designed to provide knowledge of damage prevention conditions and programs in the county as well as to help facilitate improvement in public awareness and damage prevention efforts. Accurate and timely information can lead to more effective public awareness and damage prevention programs.

The Public Awareness Metric provides a density adjusted measure of tickets versus the population.  
 The Damage Prevention Metric provides a measure of adjusted facility damages versus tickets.  
 The DIRT Reporting Metric provides a measure DIRT damage reporting by facility type.

# Colorado County Damage Prevention Report Cards - 2009

## 2009 Colorado Damage Prevention Report Card

Colorado Damage Prevention Report Card® is evaluated and published annually by Colorado 811

Reporting Year	<b>2009</b>	Note: Colorado has 64 Counties
County	<b>Kiowa</b>	

Grading Area	Grade	Score	Rank of 64	Weight
Public Awareness Metric:	F	0.660	62	50%
Damage Prevention Metric:	C	8.185	41	25%
DIRT Reporting Metric:	F	0.250	58	25%
Stakeholder Participation:	Not Avail 2009	Not Avail 2009	Not Avail 2009	
County Composite Grade:	D	0.917		

### Report Card Metrics

Demographic Data	County Value	% of State	State Value	Rank of 64
Population:	1,455	0.03%	5,083,221	60
Pop Density per SqMile:	1		49	
Housing Permits:	5	0.05%	9,355	52
Net Migration:	7	0.02%	29,531	44

One-Call Data	County Value	% of State	State Value	Rank of 64
Incoming Tickets:	123	0.03%	470,716	63
Adjusted Facility Damages:	1	0.03%	3,207	3
Non-Adjusted DIRT Damages:				
Telecommunications	NotReported	0.00%	1,911	
Natural Gas	NotReported	0.00%	768	
Electric	NotReported	0.00%	231	
CableTV	NotReported	0.00%	200	
Water	NotReported	0.00%	40	
Sewer	NotReported	0.00%	17	
Pipeline	NotReported	0.00%	1	
Other	1	2.56%	39	

The *Colorado Damage Prevention Report Card®* provides industry stakeholders in each county with current One-Call ticketing, underground facility damage and demographic information. This information is designed to provide knowledge of damage prevention conditions and programs in the county as well as to help facilitate improvement in public awareness and damage prevention efforts. Accurate and timely information can lead to more effective public awareness and damage prevention programs.

The *Public Awareness Metric* provides a density adjusted measure of tickets versus the population.  
 The *Damage Prevention Metric* provides a measure of adjusted facility damages versus tickets.  
 The *DIRT Reporting Metric* provides a measure DIRT damage reporting by facility type.

# Colorado County Damage Prevention Report Cards - 2009

## 2009 Colorado Damage Prevention Report Card

Colorado Damage Prevention Report Card® is evaluated and published annually by Colorado 811

Reporting Year	<b>2009</b>	
County	<b>Kit Carson</b>	Note: Colorado has 64 Counties

Grading Area	Grade	Score	Rank of 64	Weight
Public Awareness Metric:	D	0.729	53	50%
Damage Prevention Metric:	B-	2.758	20	25%
DIRT Reporting Metric:	D	1.000	40	25%
Stakeholder Participation:	Not Avail 2009	Not Avail 2009	Not Avail 2009	
County Composite Grade:	C-	1.583		

Report Card Metrics				
Demographic Data	County Value	% of State	State Value	Rank of 64
Population:	8,392	0.17%	5,083,221	42
Pop Density per SqMile:	4		49	
Housing Permits:	1	0.01%	9,355	56
Net Migration:	(2)	-0.01%	29,531	49

One-Call Data	County Value	% of State	State Value	Rank of 64
Incoming Tickets:	646	0.14%	470,716	45
Adjusted Facility Damages:	2	0.06%	3,207	15
Non-Adjusted DIRT Damages:				
Telecommunications	NotReported	0.00%	1,911	
Natural Gas	2	0.26%	768	
Electric	NotReported	0.00%	231	
CableTV	NotReported	0.00%	200	
Water	NotReported	0.00%	40	
Sewer	NotReported	0.00%	17	
Pipeline	NotReported	0.00%	1	
Other	NotReported	0.00%	39	

The *Colorado Damage Prevention Report Card®* provides industry stakeholders in each county with current One-Call ticketing, underground facility damage and demographic information. This information is designed to provide knowledge of damage prevention conditions and programs in the county as well as to help facilitate improvement in public awareness and damage prevention efforts. Accurate and timely information can lead to more effective public awareness and damage prevention programs.

The *Public Awareness Metric* provides a density adjusted measure of tickets versus the population.  
 The *Damage Prevention Metric* provides a measure of adjusted facility damages versus tickets.  
 The *DIRT Reporting Metric* provides a measure DIRT damage reporting by facility type.

# Colorado County Damage Prevention Report Cards - 2009

## 2009 Colorado Damage Prevention Report Card

Colorado Damage Prevention Report Card® is evaluated and published annually by Colorado 811

Reporting Year	<b>2009</b>	Note: Colorado has 64 Counties
County	<b>La Plata</b>	

Grading Area	Grade	Score	Rank of 64	Weight
Public Awareness Metric:	A-	0.897	3	50%
Damage Prevention Metric:	C+	3.944	29	25%
DIRT Reporting Metric:	D+	1.375	27	25%
Stakeholder Participation:	Not Avail 2009	Not Avail 2009	Not Avail 2009	
County Composite Grade:	B-	2.833		

Report Card Metrics				
Demographic Data	County Value	% of State	State Value	Rank of 64
Population:	51,268	1.01%	5,083,221	15
Pop Density per SqMile:	30		49	
Housing Permits:	233	2.49%	9,355	12
Net Migration:	215	0.73%	29,531	20

One-Call Data	County Value	% of State	State Value	Rank of 64
Incoming Tickets:	11,931	2.53%	470,716	12
Adjusted Facility Damages:	66	2.06%	3,207	50
Non-Adjusted DIRT Damages:				
Telecommunications	52	2.72%	1,911	
Natural Gas	14	1.82%	768	
Electric	NotReported	0.00%	231	
CableTV	NotReported	0.00%	200	
Water	NotReported	0.00%	40	
Sewer	NotReported	0.00%	17	
Pipeline	NotReported	0.00%	1	
Other	NotReported	0.00%	39	

The *Colorado Damage Prevention Report Card®* provides industry stakeholders in each county with current One-Call ticketing, underground facility damage and demographic information. This information is designed to provide knowledge of damage prevention conditions and programs in the county as well as to help facilitate improvement in public awareness and damage prevention efforts. Accurate and timely information can lead to more effective public awareness and damage prevention programs.

The *Public Awareness Metric* provides a density adjusted measure of tickets versus the population.  
 The *Damage Prevention Metric* provides a measure of adjusted facility damages versus tickets.  
 The *DIRT Reporting Metric* provides a measure DIRT damage reporting by facility type.



# Colorado County Damage Prevention Report Cards - 2009

## 2009 Colorado Damage Prevention Report Card

Colorado Damage Prevention Report Card® is evaluated and published annually by Colorado 811

Reporting Year	<b>2009</b>	Note: Colorado has 64 Counties
County	<b>Lake</b>	

Grading Area	Grade	Score	Rank of 64	Weight
Public Awareness Metric:	F	0.693	60	50%
Damage Prevention Metric:	C+	3.716	27	25%
DIRT Reporting Metric:	F	0.375	50	25%
Stakeholder Participation:	Not Avail 2009	Not Avail 2009	Not Avail 2009	
County Composite Grade:	D	1.000		

Report Card Metrics				
Demographic Data	County Value	% of State	State Value	Rank of 64
Population:	8,681	0.17%	5,083,221	40
Pop Density per SqMile:	23		49	
Housing Permits:	0	0.00%	9,355	62
Net Migration:	236	0.80%	29,531	19

One-Call Data	County Value	% of State	State Value	Rank of 64
Incoming Tickets:	397	0.08%	470,716	54
Adjusted Facility Damages:	2	0.06%	3,207	15
Non-Adjusted DIRT Damages:				
Telecommunications	2	0.10%	1,911	
Natural Gas	NotReported	0.00%	768	
Electric	NotReported	0.00%	231	
CableTV	NotReported	0.00%	200	
Water	NotReported	0.00%	40	
Sewer	NotReported	0.00%	17	
Pipeline	NotReported	0.00%	1	
Other	NotReported	0.00%	39	

The Colorado Damage Prevention Report Card® provides industry stakeholders in each county with current One-Call ticketing, underground facility damage and demographic information. This information is designed to provide knowledge of damage prevention conditions and programs in the county as well as to help facilitate improvement in public awareness and damage prevention efforts. Accurate and timely information can lead to more effective public awareness and damage prevention programs.

The Public Awareness Metric provides a density adjusted measure of tickets versus the population.  
 The Damage Prevention Metric provides a measure of adjusted facility damages versus tickets.  
 The DIRT Reporting Metric provides a measure DIRT damage reporting by facility type.

# Colorado County Damage Prevention Report Cards - 2009

## 2009 Colorado Damage Prevention Report Card

Colorado Damage Prevention Report Card® is evaluated and published annually by Colorado 811

Reporting Year	<b>2009</b>	Note: Colorado has 64 Counties
County	<b>Larimer</b>	

Grading Area	Grade	Score	Rank of 64	Weight
Public Awareness Metric:	B	0.866	7	50%
Damage Prevention Metric:	C+	3.009	22	25%
DIRT Reporting Metric:	C+	2.375	17	25%
Stakeholder Participation:	Not Avail 2009	Not Avail 2009	Not Avail 2009	
County Composite Grade:	B	2.833		

Report Card Metrics				
Demographic Data	County Value	% of State	State Value	Rank of 64
Population:	297,268	5.85%	5,083,221	7
Pop Density per SqMile:	113		49	
Housing Permits:	451	4.82%	9,355	7
Net Migration:	1,474	4.99%	29,531	10

One-Call Data	County Value	% of State	State Value	Rank of 64
Incoming Tickets:	33,326	7.08%	470,716	6
Adjusted Facility Damages:	165	5.14%	3,207	58
Non-Adjusted DIRT Damages:				
Telecommunications	128	6.70%	1,911	
Natural Gas	23	2.99%	768	
Electric	NotReported	0.00%	231	
CableTV	12	6.00%	200	
Water	2	5.00%	40	
Sewer	NotReported	0.00%	17	
Pipeline	NotReported	0.00%	1	
Other	NotReported	0.00%	39	

The Colorado Damage Prevention Report Card® provides industry stakeholders in each county with current One-Call ticketing, underground facility damage and demographic information. This information is designed to provide knowledge of damage prevention conditions and programs in the county as well as to help facilitate improvement in public awareness and damage prevention efforts. Accurate and timely information can lead to more effective public awareness and damage prevention programs.

The Public Awareness Metric provides a density adjusted measure of tickets versus the population.  
 The Damage Prevention Metric provides a measure of adjusted facility damages versus tickets.  
 The DIRT Reporting Metric provides a measure DIRT damage reporting by facility type.

# Colorado County Damage Prevention Report Cards - 2009

## 2009 Colorado Damage Prevention Report Card

Colorado Damage Prevention Report Card® is evaluated and published annually by Colorado 811

Reporting Year	<b>2009</b>	
County	<b>Las Animas</b>	Note: Colorado has 64 Counties

Grading Area	Grade	Score	Rank of 64	Weight
Public Awareness Metric:	C	0.817	24	50%
Damage Prevention Metric:	C	5.966	36	25%
DIRT Reporting Metric:	C+	2.375	17	25%
Stakeholder Participation:	Not Avail 2009	Not Avail 2009	Not Avail 2009	
County Composite Grade:	C+	2.250		

Report Card Metrics				
Demographic Data	County Value	% of State	State Value	Rank of 64
Population:	16,857	0.33%	5,083,221	30
Pop Density per SqMile:	4		49	
Housing Permits:	18	0.19%	9,355	38
Net Migration:	206	0.70%	29,531	21

One-Call Data	County Value	% of State	State Value	Rank of 64
Incoming Tickets:	2,561	0.54%	470,716	25
Adjusted Facility Damages:	17	0.53%	3,207	36
Non-Adjusted DIRT Damages:				
Telecommunications	9	0.47%	1,911	
Natural Gas	2	0.26%	768	
Electric	NotReported	0.00%	231	
CableTV	1	0.50%	200	
Water	5	12.50%	40	
Sewer	NotReported	0.00%	17	
Pipeline	NotReported	0.00%	1	
Other	NotReported	0.00%	39	

The *Colorado Damage Prevention Report Card®* provides industry stakeholders in each county with current One-Call ticketing, underground facility damage and demographic information. This information is designed to provide knowledge of damage prevention conditions and programs in the county as well as to help facilitate improvement in public awareness and damage prevention efforts. Accurate and timely information can lead to more effective public awareness and damage prevention programs.

The *Public Awareness Metric* provides a density adjusted measure of tickets versus the population.  
 The *Damage Prevention Metric* provides a measure of adjusted facility damages versus tickets.  
 The *DIRT Reporting Metric* provides a measure DIRT damage reporting by facility type.

# Colorado County Damage Prevention Report Cards - 2009

## 2009 Colorado Damage Prevention Report Card

Colorado Damage Prevention Report Card® is evaluated and published annually by Colorado 811

Reporting Year	<b>2009</b>	Note: Colorado has 64 Counties
County	<b>Lincoln</b>	

Grading Area	Grade	Score	Rank of 64	Weight
Public Awareness Metric:	D-	0.710	57	50%
Damage Prevention Metric:	D+	13.014	56	25%
DIRT Reporting Metric:	F	0.375	50	25%
Stakeholder Participation:	Not Avail 2009	Not Avail 2009	Not Avail 2009	
County Composite Grade:	D	0.917		

Report Card Metrics				
Demographic Data	County Value	% of State	State Value	Rank of 64
Population:	5,656	0.11%	5,083,221	49
Pop Density per SqMile:	2		49	
Housing Permits:	7	0.07%	9,355	47
Net Migration:	(13)	-0.04%	29,531	51

One-Call Data	County Value	% of State	State Value	Rank of 64
Incoming Tickets:	432	0.09%	470,716	52
Adjusted Facility Damages:	6	0.19%	3,207	26
Non-Adjusted DIRT Damages:				
Telecommunications	6	0.31%	1,911	
Natural Gas	NotReported	0.00%	768	
Electric	NotReported	0.00%	231	
CableTV	NotReported	0.00%	200	
Water	NotReported	0.00%	40	
Sewer	NotReported	0.00%	17	
Pipeline	NotReported	0.00%	1	
Other	NotReported	0.00%	39	

The *Colorado Damage Prevention Report Card®* provides industry stakeholders in each county with current One-Call ticketing, underground facility damage and demographic information. This information is designed to provide knowledge of damage prevention conditions and programs in the county as well as to help facilitate improvement in public awareness and damage prevention efforts. Accurate and timely information can lead to more effective public awareness and damage prevention programs.

The *Public Awareness Metric* provides a density adjusted measure of tickets versus the population.  
 The *Damage Prevention Metric* provides a measure of adjusted facility damages versus tickets.  
 The *DIRT Reporting Metric* provides a measure DIRT damage reporting by facility type.

# Colorado County Damage Prevention Report Cards - 2009

## 2009 Colorado Damage Prevention Report Card

Colorado Damage Prevention Report Card® is evaluated and published annually by Colorado 811

Reporting Year	<b>2009</b>	
County	<b>Logan</b>	Note: Colorado has 64 Counties

Grading Area	Grade	Score	Rank of 64	Weight
Public Awareness Metric:	C-	0.789	34	50%
Damage Prevention Metric:	C+	5.294	31	25%
DIRT Reporting Metric:	D+	1.375	27	25%
Stakeholder Participation:	Not Avail 2009	Not Avail 2009	Not Avail 2009	
County Composite Grade:	C	1.917		

Report Card Metrics				
Demographic Data	County Value	% of State	State Value	Rank of 64
Population:	21,719	0.43%	5,083,221	25
Pop Density per SqMile:	12		49	
Housing Permits:	15	0.16%	9,355	42
Net Migration:	(35)	-0.12%	29,531	54

One-Call Data	County Value	% of State	State Value	Rank of 64
Incoming Tickets:	2,102	0.45%	470,716	29
Adjusted Facility Damages:	14	0.44%	3,207	33
Non-Adjusted DIRT Damages:				
Telecommunications	13	0.68%	1,911	
Natural Gas	1	0.13%	768	
Electric	NotReported	0.00%	231	
CableTV	NotReported	0.00%	200	
Water	NotReported	0.00%	40	
Sewer	NotReported	0.00%	17	
Pipeline	NotReported	0.00%	1	
Other	NotReported	0.00%	39	

The Colorado Damage Prevention Report Card® provides industry stakeholders in each county with current One-Call ticketing, underground facility damage and demographic information. This information is designed to provide knowledge of damage prevention conditions and programs in the county as well as to help facilitate improvement in public awareness and damage prevention efforts. Accurate and timely information can lead to more effective public awareness and damage prevention programs.

The Public Awareness Metric provides a density adjusted measure of tickets versus the population.  
 The Damage Prevention Metric provides a measure of adjusted facility damages versus tickets.  
 The DIRT Reporting Metric provides a measure DIRT damage reporting by facility type.

# Colorado County Damage Prevention Report Cards - 2009

## 2009 Colorado Damage Prevention Report Card

Colorado Damage Prevention Report Card® is evaluated and published annually by Colorado 811

Reporting Year	<b>2009</b>	Note: Colorado has 64 Counties
County	<b>Mesa</b>	

Grading Area	Grade	Score	Rank of 64	Weight
Public Awareness Metric:	C+	0.847	14	50%
Damage Prevention Metric:	C	5.915	35	25%
DIRT Reporting Metric:	C+	2.375	17	25%
Stakeholder Participation:	Not Avail 2009	Not Avail 2009	Not Avail 2009	
County Composite Grade:	C+	2.417		

Report Card Metrics				
Demographic Data	County Value	% of State	State Value	Rank of 64
Population:	147,258	2.90%	5,083,221	11
Pop Density per SqMile:	44		49	
Housing Permits:	365	3.90%	9,355	10
Net Migration:	1,986	6.73%	29,531	8

One-Call Data	County Value	% of State	State Value	Rank of 64
Incoming Tickets:	16,240	3.45%	470,716	10
Adjusted Facility Damages:	141	4.40%	3,207	57
Non-Adjusted DIRT Damages:				
Telecommunications	107	5.60%	1,911	
Natural Gas	25	3.26%	768	
Electric	9	3.90%	231	
CableTV	NotReported	0.00%	200	
Water	NotReported	0.00%	40	
Sewer	NotReported	0.00%	17	
Pipeline	NotReported	0.00%	1	
Other	NotReported	0.00%	39	

The *Colorado Damage Prevention Report Card®* provides industry stakeholders in each county with current One-Call ticketing, underground facility damage and demographic information. This information is designed to provide knowledge of damage prevention conditions and programs in the county as well as to help facilitate improvement in public awareness and damage prevention efforts. Accurate and timely information can lead to more effective public awareness and damage prevention programs.

The *Public Awareness Metric* provides a density adjusted measure of tickets versus the population.  
 The *Damage Prevention Metric* provides a measure of adjusted facility damages versus tickets.  
 The *DIRT Reporting Metric* provides a measure DIRT damage reporting by facility type.

# Colorado County Damage Prevention Report Cards - 2009

## 2009 Colorado Damage Prevention Report Card

Colorado Damage Prevention Report Card® is evaluated and published annually by Colorado 811

Reporting Year	<b>2009</b>	Note: Colorado has 64 Counties
County	<b>Mineral</b>	

Grading Area	Grade	Score	Rank of 64	Weight
Public Awareness Metric:	D+	0.750	46	50%
Damage Prevention Metric:	C	5.628	34	25%
DIRT Reporting Metric:	F	0.250	58	25%
Stakeholder Participation:	Not Avail 2009	Not Avail 2009	Not Avail 2009	
County Composite Grade:	D+	1.417		

Report Card Metrics				
Demographic Data	County Value	% of State	State Value	Rank of 64
Population:	997	0.02%	5,083,221	62
Pop Density per SqMile:	1		49	
Housing Permits:	7	0.07%	9,355	47
Net Migration:	11	0.04%	29,531	41

One-Call Data	County Value	% of State	State Value	Rank of 64
Incoming Tickets:	175	0.04%	470,716	61
Adjusted Facility Damages:	1	0.03%	3,207	3
Non-Adjusted DIRT Damages:				
Telecommunications	NotReported	0.00%	1,911	
Natural Gas	NotReported	0.00%	768	
Electric	NotReported	0.00%	231	
CableTV	NotReported	0.00%	200	
Water	NotReported	0.00%	40	
Sewer	NotReported	0.00%	17	
Pipeline	NotReported	0.00%	1	
Other	1	2.56%	39	

The *Colorado Damage Prevention Report Card®* provides industry stakeholders in each county with current One-Call ticketing, underground facility damage and demographic information. This information is designed to provide knowledge of damage prevention conditions and programs in the county as well as to help facilitate improvement in public awareness and damage prevention efforts. Accurate and timely information can lead to more effective public awareness and damage prevention programs.

The *Public Awareness Metric* provides a density adjusted measure of tickets versus the population.  
 The *Damage Prevention Metric* provides a measure of adjusted facility damages versus tickets.  
 The *DIRT Reporting Metric* provides a measure DIRT damage reporting by facility type.

# Colorado County Damage Prevention Report Cards - 2009

## 2009 Colorado Damage Prevention Report Card

Colorado Damage Prevention Report Card® is evaluated and published annually by Colorado 811

Reporting Year	<b>2009</b>	
County	<b>Moffat</b>	Note: Colorado has 64 Counties

Grading Area	Grade	Score	Rank of 64	Weight
Public Awareness Metric:	C-	0.761	41	50%
Damage Prevention Metric:	C	7.488	38	25%
DIRT Reporting Metric:	D+	1.375	27	25%
Stakeholder Participation:	Not Avail 2009	Not Avail 2009	Not Avail 2009	
County Composite Grade:	C	1.833		

Report Card Metrics				
Demographic Data	County Value	% of State	State Value	Rank of 64
Population:	14,598	0.29%	5,083,221	34
Pop Density per SqMile:	3		49	
Housing Permits:	21	0.22%	9,355	35
Net Migration:	299	1.01%	29,531	18

One-Call Data	County Value	% of State	State Value	Rank of 64
Incoming Tickets:	1,337	0.28%	470,716	35
Adjusted Facility Damages:	11	0.34%	3,207	30
Non-Adjusted DIRT Damages:				
Telecommunications	8	0.42%	1,911	
Natural Gas	3	0.39%	768	
Electric	NotReported	0.00%	231	
CableTV	NotReported	0.00%	200	
Water	NotReported	0.00%	40	
Sewer	NotReported	0.00%	17	
Pipeline	NotReported	0.00%	1	
Other	NotReported	0.00%	39	

The Colorado Damage Prevention Report Card® provides industry stakeholders in each county with current One-Call ticketing, underground facility damage and demographic information. This information is designed to provide knowledge of damage prevention conditions and programs in the county as well as to help facilitate improvement in public awareness and damage prevention efforts. Accurate and timely information can lead to more effective public awareness and damage prevention programs.

The Public Awareness Metric provides a density adjusted measure of tickets versus the population.  
 The Damage Prevention Metric provides a measure of adjusted facility damages versus tickets.  
 The DIRT Reporting Metric provides a measure DIRT damage reporting by facility type.



# Colorado County Damage Prevention Report Cards - 2009

## 2009 Colorado Damage Prevention Report Card

Colorado Damage Prevention Report Card® is evaluated and published annually by Colorado 811

Reporting Year	<b>2009</b>	
County	<b>Montezuma</b>	Note: Colorado has 64 Counties

Grading Area	Grade	Score	Rank of 64	Weight
Public Awareness Metric:	C	0.799	30	50%
Damage Prevention Metric:	D+	11.911	54	25%
DIRT Reporting Metric:	B	3.000	6	25%
Stakeholder Participation:	Not Avail 2009	Not Avail 2009	Not Avail 2009	
County Composite Grade:	C+	2.250		

Report Card Metrics				
Demographic Data	County Value	% of State	State Value	Rank of 64
Population:	25,920	0.51%	5,083,221	21
Pop Density per SqMile:	13		49	
Housing Permits:	16	0.17%	9,355	40
Net Migration:	106	0.36%	29,531	27

One-Call Data	County Value	% of State	State Value	Rank of 64
Incoming Tickets:	2,646	0.56%	470,716	24
Adjusted Facility Damages:	40	1.25%	3,207	44
Non-Adjusted DIRT Damages:				
Telecommunications	36	1.88%	1,911	
Natural Gas	1	0.13%	768	
Electric	2	0.87%	231	
CableTV	NotReported	0.00%	200	
Water	NotReported	0.00%	40	
Sewer	1	5.88%	17	
Pipeline	NotReported	0.00%	1	
Other	NotReported	0.00%	39	

The *Colorado Damage Prevention Report Card®* provides industry stakeholders in each county with current One-Call ticketing, underground facility damage and demographic information. This information is designed to provide knowledge of damage prevention conditions and programs in the county as well as to help facilitate improvement in public awareness and damage prevention efforts. Accurate and timely information can lead to more effective public awareness and damage prevention programs.

The *Public Awareness Metric* provides a density adjusted measure of tickets versus the population.  
 The *Damage Prevention Metric* provides a measure of adjusted facility damages versus tickets.  
 The *DIRT Reporting Metric* provides a measure DIRT damage reporting by facility type.

# Colorado County Damage Prevention Report Cards - 2009

## 2009 Colorado Damage Prevention Report Card

Colorado Damage Prevention Report Card® is evaluated and published annually by Colorado 811

Reporting Year	<b>2009</b>	Note: Colorado has 64 Counties
County	<b>Montrose</b>	

Grading Area	Grade	Score	Rank of 64	Weight
Public Awareness Metric:	C	0.814	25	50%
Damage Prevention Metric:	C-	10.468	53	25%
DIRT Reporting Metric:	C+	2.375	17	25%
Stakeholder Participation:	Not Avail 2009	Not Avail 2009	Not Avail 2009	
County Composite Grade:	C+	2.167		

Report Card Metrics				
Demographic Data	County Value	% of State	State Value	Rank of 64
Population:	42,156	0.83%	5,083,221	17
Pop Density per SqMile:	19		49	
Housing Permits:	118	1.26%	9,355	15
Net Migration:	683	2.31%	29,531	12

One-Call Data	County Value	% of State	State Value	Rank of 64
Incoming Tickets:	4,393	0.93%	470,716	18
Adjusted Facility Damages:	61	1.90%	3,207	49
Non-Adjusted DIRT Damages:				
Telecommunications	35	1.83%	1,911	
Natural Gas	24	3.13%	768	
Electric	2	0.87%	231	
CableTV	NotReported	0.00%	200	
Water	NotReported	0.00%	40	
Sewer	NotReported	0.00%	17	
Pipeline	NotReported	0.00%	1	
Other	NotReported	0.00%	39	

The *Colorado Damage Prevention Report Card®* provides industry stakeholders in each county with current One-Call ticketing, underground facility damage and demographic information. This information is designed to provide knowledge of damage prevention conditions and programs in the county as well as to help facilitate improvement in public awareness and damage prevention efforts. Accurate and timely information can lead to more effective public awareness and damage prevention programs.

The *Public Awareness Metric* provides a density adjusted measure of tickets versus the population.  
 The *Damage Prevention Metric* provides a measure of adjusted facility damages versus tickets.  
 The *DIRT Reporting Metric* provides a measure DIRT damage reporting by facility type.

# Colorado County Damage Prevention Report Cards - 2009

## 2009 Colorado Damage Prevention Report Card

Colorado Damage Prevention Report Card® is evaluated and published annually by Colorado 811

Reporting Year	<b>2009</b>	Note: Colorado has 64 Counties
County	<b>Morgan</b>	

Grading Area	Grade	Score	Rank of 64	Weight
Public Awareness Metric:	C+	0.824	23	50%
Damage Prevention Metric:	C+	3.179	24	25%
DIRT Reporting Metric:	D+	1.375	27	25%
Stakeholder Participation:	Not Avail 2009	Not Avail 2009	Not Avail 2009	
County Composite Grade:	C+	2.250		

Report Card Metrics				
Demographic Data	County Value	% of State	State Value	Rank of 64
Population:	28,689	0.56%	5,083,221	20
Pop Density per SqMile:	22		49	
Housing Permits:	19	0.20%	9,355	37
Net Migration:	(87)	-0.29%	29,531	60

One-Call Data	County Value	% of State	State Value	Rank of 64
Incoming Tickets:	3,489	0.74%	470,716	19
Adjusted Facility Damages:	15	0.47%	3,207	34
Non-Adjusted DIRT Damages:				
Telecommunications	14	0.73%	1,911	
Natural Gas	1	0.13%	768	
Electric	NotReported	0.00%	231	
CableTV	NotReported	0.00%	200	
Water	NotReported	0.00%	40	
Sewer	NotReported	0.00%	17	
Pipeline	NotReported	0.00%	1	
Other	NotReported	0.00%	39	

The *Colorado Damage Prevention Report Card®* provides industry stakeholders in each county with current One-Call ticketing, underground facility damage and demographic information. This information is designed to provide knowledge of damage prevention conditions and programs in the county as well as to help facilitate improvement in public awareness and damage prevention efforts. Accurate and timely information can lead to more effective public awareness and damage prevention programs.

The *Public Awareness Metric* provides a density adjusted measure of tickets versus the population.  
 The *Damage Prevention Metric* provides a measure of adjusted facility damages versus tickets.  
 The *DIRT Reporting Metric* provides a measure DIRT damage reporting by facility type.

# Colorado County Damage Prevention Report Cards - 2009

## 2009 Colorado Damage Prevention Report Card

Colorado Damage Prevention Report Card® is evaluated and published annually by Colorado 811

Reporting Year	<b>2009</b>	Note: Colorado has 64 Counties
County	<b>Otero</b>	

Grading Area	Grade	Score	Rank of 64	Weight
Public Awareness Metric:	D+	0.756	43	50%
Damage Prevention Metric:	B-	2.912	21	25%
DIRT Reporting Metric:	F	0.250	58	25%
Stakeholder Participation:	Not Avail 2009	Not Avail 2009	Not Avail 2009	
County Composite Grade:	C-	1.583		

Report Card Metrics				
Demographic Data	County Value	% of State	State Value	Rank of 64
Population:	19,005	0.37%	5,083,221	26
Pop Density per SqMile:	15		49	
Housing Permits:	3	0.03%	9,355	54
Net Migration:	(105)	-0.36%	29,531	61

One-Call Data	County Value	% of State	State Value	Rank of 64
Incoming Tickets:	1,328	0.28%	470,716	36
Adjusted Facility Damages:	5	0.16%	3,207	24
Non-Adjusted DIRT Damages:				
Telecommunications	NotReported	0.00%	1,911	
Natural Gas	NotReported	0.00%	768	
Electric	NotReported	0.00%	231	
CableTV	NotReported	0.00%	200	
Water	NotReported	0.00%	40	
Sewer	NotReported	0.00%	17	
Pipeline	NotReported	0.00%	1	
Other	5	12.82%	39	

The *Colorado Damage Prevention Report Card®* provides industry stakeholders in each county with current One-Call ticketing, underground facility damage and demographic information. This information is designed to provide knowledge of damage prevention conditions and programs in the county as well as to help facilitate improvement in public awareness and damage prevention efforts. Accurate and timely information can lead to more effective public awareness and damage prevention programs.

The *Public Awareness Metric* provides a density adjusted measure of tickets versus the population.  
 The *Damage Prevention Metric* provides a measure of adjusted facility damages versus tickets.  
 The *DIRT Reporting Metric* provides a measure DIRT damage reporting by facility type.

# Colorado County Damage Prevention Report Cards - 2009

## 2009 Colorado Damage Prevention Report Card

Colorado Damage Prevention Report Card® is evaluated and published annually by Colorado 811

Reporting Year	<b>2009</b>	Note: Colorado has 64 Counties
County	<b>Ouray</b>	

Grading Area	Grade	Score	Rank of 64	Weight
Public Awareness Metric:	C	0.801	29	50%
Damage Prevention Metric:	C	6.718	37	25%
DIRT Reporting Metric:	D+	1.375	27	25%
Stakeholder Participation:	Not Avail 2009	Not Avail 2009	Not Avail 2009	
County Composite Grade:	C	2.000		

Report Card Metrics				
Demographic Data	County Value	% of State	State Value	Rank of 64
Population:	4,816	0.09%	5,083,221	51
Pop Density per SqMile:	9		49	
Housing Permits:	21	0.22%	9,355	35
Net Migration:	100	0.34%	29,531	28

One-Call Data	County Value	% of State	State Value	Rank of 64
Incoming Tickets:	732	0.16%	470,716	44
Adjusted Facility Damages:	6	0.19%	3,207	26
Non-Adjusted DIRT Damages:				
Telecommunications	4	0.21%	1,911	
Natural Gas	2	0.26%	768	
Electric	NotReported	0.00%	231	
CableTV	NotReported	0.00%	200	
Water	NotReported	0.00%	40	
Sewer	NotReported	0.00%	17	
Pipeline	NotReported	0.00%	1	
Other	NotReported	0.00%	39	

The *Colorado Damage Prevention Report Card®* provides industry stakeholders in each county with current One-Call ticketing, underground facility damage and demographic information. This information is designed to provide knowledge of damage prevention conditions and programs in the county as well as to help facilitate improvement in public awareness and damage prevention efforts. Accurate and timely information can lead to more effective public awareness and damage prevention programs.

The *Public Awareness Metric* provides a density adjusted measure of tickets versus the population.  
 The *Damage Prevention Metric* provides a measure of adjusted facility damages versus tickets.  
 The *DIRT Reporting Metric* provides a measure DIRT damage reporting by facility type.

# Colorado County Damage Prevention Report Cards - 2009

## 2009 Colorado Damage Prevention Report Card

Colorado Damage Prevention Report Card® is evaluated and published annually by Colorado 811

Reporting Year	<b>2009</b>	Note: Colorado has 64 Counties
County	<b>Park</b>	

Grading Area	Grade	Score	Rank of 64	Weight
Public Awareness Metric:	D+	0.752	45	50%
Damage Prevention Metric:	C-	10.450	52	25%
DIRT Reporting Metric:	F	0.375	50	25%
Stakeholder Participation:	Not Avail 2009	Not Avail 2009	Not Avail 2009	
County Composite Grade:	D+	1.333		

Report Card Metrics				
Demographic Data	County Value	% of State	State Value	Rank of 64
Population:	17,271	0.34%	5,083,221	28
Pop Density per SqMile:	8		49	
Housing Permits:	106	1.13%	9,355	16
Net Migration:	129	0.44%	29,531	25

One-Call Data	County Value	% of State	State Value	Rank of 64
Incoming Tickets:	1,272	0.27%	470,716	37
Adjusted Facility Damages:	16	0.50%	3,207	35
Non-Adjusted DIRT Damages:				
Telecommunications	16	0.84%	1,911	
Natural Gas	NotReported	0.00%	768	
Electric	NotReported	0.00%	231	
CableTV	NotReported	0.00%	200	
Water	NotReported	0.00%	40	
Sewer	NotReported	0.00%	17	
Pipeline	NotReported	0.00%	1	
Other	NotReported	0.00%	39	

The *Colorado Damage Prevention Report Card®* provides industry stakeholders in each county with current One-Call ticketing, underground facility damage and demographic information. This information is designed to provide knowledge of damage prevention conditions and programs in the county as well as to help facilitate improvement in public awareness and damage prevention efforts. Accurate and timely information can lead to more effective public awareness and damage prevention programs.

The *Public Awareness Metric* provides a density adjusted measure of tickets versus the population.  
 The *Damage Prevention Metric* provides a measure of adjusted facility damages versus tickets.  
 The *DIRT Reporting Metric* provides a measure DIRT damage reporting by facility type.

# Colorado County Damage Prevention Report Cards - 2009

## 2009 Colorado Damage Prevention Report Card

Colorado Damage Prevention Report Card® is evaluated and published annually by Colorado 811

Reporting Year	<b>2009</b>	Note: Colorado has 64 Counties
County	<b>Phillips</b>	

Grading Area	Grade	Score	Rank of 64	Weight
Public Awareness Metric:	C-	0.765	38	50%
Damage Prevention Metric:	D+	14.265	57	25%
DIRT Reporting Metric:	D+	1.375	27	25%
Stakeholder Participation:	Not Avail 2009	Not Avail 2009	Not Avail 2009	
County Composite Grade:	C-	1.667		

Report Card Metrics				
Demographic Data	County Value	% of State	State Value	Rank of 64
Population:	4,582	0.09%	5,083,221	53
Pop Density per SqMile:	7		49	
Housing Permits:	7	0.07%	9,355	47
Net Migration:	(27)	-0.09%	29,531	53

One-Call Data	County Value	% of State	State Value	Rank of 64
Incoming Tickets:	533	0.11%	470,716	47
Adjusted Facility Damages:	9	0.28%	3,207	28
Non-Adjusted DIRT Damages:				
Telecommunications	6	0.31%	1,911	
Natural Gas	3	0.39%	768	
Electric	NotReported	0.00%	231	
CableTV	NotReported	0.00%	200	
Water	NotReported	0.00%	40	
Sewer	NotReported	0.00%	17	
Pipeline	NotReported	0.00%	1	
Other	NotReported	0.00%	39	

The *Colorado Damage Prevention Report Card®* provides industry stakeholders in each county with current One-Call ticketing, underground facility damage and demographic information. This information is designed to provide knowledge of damage prevention conditions and programs in the county as well as to help facilitate improvement in public awareness and damage prevention efforts. Accurate and timely information can lead to more effective public awareness and damage prevention programs.

The *Public Awareness Metric* provides a density adjusted measure of tickets versus the population.  
 The *Damage Prevention Metric* provides a measure of adjusted facility damages versus tickets.  
 The *DIRT Reporting Metric* provides a measure DIRT damage reporting by facility type.

# Colorado County Damage Prevention Report Cards - 2009

## 2009 Colorado Damage Prevention Report Card

Colorado Damage Prevention Report Card® is evaluated and published annually by Colorado 811

Reporting Year	<b>2009</b>	Note: Colorado has 64 Counties
County	<b>Pitkin</b>	

Grading Area	Grade	Score	Rank of 64	Weight
Public Awareness Metric:	C+	0.844	17	50%
Damage Prevention Metric:	D	25.007	62	25%
DIRT Reporting Metric:	B+	3.375	5	25%
Stakeholder Participation:	Not Avail 2009	Not Avail 2009	Not Avail 2009	
County Composite Grade:	C+	2.417		

Report Card Metrics				
Demographic Data	County Value	% of State	State Value	Rank of 64
Population:	17,268	0.34%	5,083,221	29
Pop Density per SqMile:	18		49	
Housing Permits:	27	0.29%	9,355	33
Net Migration:	46	0.16%	29,531	35

One-Call Data	County Value	% of State	State Value	Rank of 64
Incoming Tickets:	2,851	0.61%	470,716	22
Adjusted Facility Damages:	94	2.93%	3,207	53
Non-Adjusted DIRT Damages:				
Telecommunications	62	3.24%	1,911	
Natural Gas	12	1.56%	768	
Electric	10	4.33%	231	
CableTV	6	3.00%	200	
Water	NotReported	0.00%	40	
Sewer	4	23.53%	17	
Pipeline	NotReported	0.00%	1	
Other	NotReported	0.00%	39	

The *Colorado Damage Prevention Report Card®* provides industry stakeholders in each county with current One-Call ticketing, underground facility damage and demographic information. This information is designed to provide knowledge of damage prevention conditions and programs in the county as well as to help facilitate improvement in public awareness and damage prevention efforts. Accurate and timely information can lead to more effective public awareness and damage prevention programs.

The *Public Awareness Metric* provides a density adjusted measure of tickets versus the population.  
 The *Damage Prevention Metric* provides a measure of adjusted facility damages versus tickets.  
 The *DIRT Reporting Metric* provides a measure DIRT damage reporting by facility type.



# Colorado County Damage Prevention Report Cards - 2009

## 2009 Colorado Damage Prevention Report Card

Colorado Damage Prevention Report Card® is evaluated and published annually by Colorado 811

Reporting Year	<b>2009</b>	
County	<b>Prowers</b>	Note: Colorado has 64 Counties

Grading Area	Grade	Score	Rank of 64	Weight
Public Awareness Metric:	D+	0.747	49	50%
Damage Prevention Metric:	B+	1.651	9	25%
DIRT Reporting Metric:	F	0.250	58	25%
Stakeholder Participation:	Not Avail 2009	Not Avail 2009	Not Avail 2009	
County Composite Grade:	C-	1.750		

Report Card Metrics				
Demographic Data	County Value	% of State	State Value	Rank of 64
Population:	13,406	0.26%	5,083,221	35
Pop Density per SqMile:	8		49	
Housing Permits:	1	0.01%	9,355	56
Net Migration:	(64)	-0.22%	29,531	57

One-Call Data	County Value	% of State	State Value	Rank of 64
Incoming Tickets:	1,002	0.21%	470,716	40
Adjusted Facility Damages:	2	0.06%	3,207	15
Non-Adjusted DIRT Damages:				
Telecommunications	NotReported	0.00%	1,911	
Natural Gas	NotReported	0.00%	768	
Electric	NotReported	0.00%	231	
CableTV	NotReported	0.00%	200	
Water	NotReported	0.00%	40	
Sewer	NotReported	0.00%	17	
Pipeline	NotReported	0.00%	1	
Other	2	5.13%	39	

The *Colorado Damage Prevention Report Card®* provides industry stakeholders in each county with current One-Call ticketing, underground facility damage and demographic information. This information is designed to provide knowledge of damage prevention conditions and programs in the county as well as to help facilitate improvement in public awareness and damage prevention efforts. Accurate and timely information can lead to more effective public awareness and damage prevention programs.

The *Public Awareness Metric* provides a density adjusted measure of tickets versus the population.  
 The *Damage Prevention Metric* provides a measure of adjusted facility damages versus tickets.  
 The *DIRT Reporting Metric* provides a measure DIRT damage reporting by facility type.

# Colorado County Damage Prevention Report Cards - 2009

## 2009 Colorado Damage Prevention Report Card

Colorado Damage Prevention Report Card® is evaluated and published annually by Colorado 811

Reporting Year	<b>2009</b>	Note: Colorado has 64 Counties
County	<b>Pueblo</b>	

Grading Area	Grade	Score	Rank of 64	Weight
Public Awareness Metric:	C+	0.828	22	50%
Damage Prevention Metric:	C-	9.619	50	25%
DIRT Reporting Metric:	C-	1.750	23	25%
Stakeholder Participation:	Not Avail 2009	Not Avail 2009	Not Avail 2009	
County Composite Grade:	C+	2.167		

Report Card Metrics				
Demographic Data	County Value	% of State	State Value	Rank of 64
Population:	159,687	3.14%	5,083,221	10
Pop Density per SqMile:	67		49	
Housing Permits:	377	4.03%	9,355	9
Net Migration:	1,541	5.22%	29,531	9

One-Call Data	County Value	% of State	State Value	Rank of 64
Incoming Tickets:	13,134	2.79%	470,716	11
Adjusted Facility Damages:	195	6.08%	3,207	61
Non-Adjusted DIRT Damages:				
Telecommunications	164	8.58%	1,911	
Natural Gas	28	3.65%	768	
Electric	NotReported	0.00%	231	
CableTV	3	1.50%	200	
Water	NotReported	0.00%	40	
Sewer	NotReported	0.00%	17	
Pipeline	NotReported	0.00%	1	
Other	NotReported	0.00%	39	

The *Colorado Damage Prevention Report Card®* provides industry stakeholders in each county with current One-Call ticketing, underground facility damage and demographic information. This information is designed to provide knowledge of damage prevention conditions and programs in the county as well as to help facilitate improvement in public awareness and damage prevention efforts. Accurate and timely information can lead to more effective public awareness and damage prevention programs.

The *Public Awareness Metric* provides a density adjusted measure of tickets versus the population.  
 The *Damage Prevention Metric* provides a measure of adjusted facility damages versus tickets.  
 The *DIRT Reporting Metric* provides a measure DIRT damage reporting by facility type.

# Colorado County Damage Prevention Report Cards - 2009

## 2009 Colorado Damage Prevention Report Card

Colorado Damage Prevention Report Card® is evaluated and published annually by Colorado 811

Reporting Year	<b>2009</b>	Note: Colorado has 64 Counties
County	<b>Rio Blanco</b>	

Grading Area	Grade	Score	Rank of 64	Weight
Public Awareness Metric:	A-	0.909	2	50%
Damage Prevention Metric:	A+	0.309	3	25%
DIRT Reporting Metric:	F	0.375	50	25%
Stakeholder Participation:	Not Avail 2009	Not Avail 2009	Not Avail 2009	
County Composite Grade:	B	2.958		

Report Card Metrics				
Demographic Data	County Value	% of State	State Value	Rank of 64
Population:	7,258	0.14%	5,083,221	45
Pop Density per SqMile:	2		49	
Housing Permits:	26	0.28%	9,355	34
Net Migration:	638	2.16%	29,531	13

One-Call Data	County Value	% of State	State Value	Rank of 64
Incoming Tickets:	3,023	0.64%	470,716	21
Adjusted Facility Damages:	1	0.03%	3,207	3
Non-Adjusted DIRT Damages:				
Telecommunications	1	0.05%	1,911	
Natural Gas	NotReported	0.00%	768	
Electric	NotReported	0.00%	231	
CableTV	NotReported	0.00%	200	
Water	NotReported	0.00%	40	
Sewer	NotReported	0.00%	17	
Pipeline	NotReported	0.00%	1	
Other	NotReported	0.00%	39	

The *Colorado Damage Prevention Report Card®* provides industry stakeholders in each county with current One-Call ticketing, underground facility damage and demographic information. This information is designed to provide knowledge of damage prevention conditions and programs in the county as well as to help facilitate improvement in public awareness and damage prevention efforts. Accurate and timely information can lead to more effective public awareness and damage prevention programs.

The *Public Awareness Metric* provides a density adjusted measure of tickets versus the population.  
 The *Damage Prevention Metric* provides a measure of adjusted facility damages versus tickets.  
 The *DIRT Reporting Metric* provides a measure DIRT damage reporting by facility type.

# Colorado County Damage Prevention Report Cards - 2009

## 2009 Colorado Damage Prevention Report Card

Colorado Damage Prevention Report Card® is evaluated and published annually by Colorado 811

Reporting Year	<b>2009</b>	
County	<b>Rio Grande</b>	Note: Colorado has 64 Counties

Grading Area	Grade	Score	Rank of 64	Weight
Public Awareness Metric:	D+	0.748	48	50%
Damage Prevention Metric:	C-	8.573	42	25%
DIRT Reporting Metric:	C+	2.375	17	25%
Stakeholder Participation:	Not Avail 2009	Not Avail 2009	Not Avail 2009	
County Composite Grade:	C	1.833		

### Report Card Metrics

Demographic Data	County Value	% of State	State Value	Rank of 64
Population:	12,569	0.25%	5,083,221	37
Pop Density per SqMile:	14		49	
Housing Permits:	14	0.15%	9,355	43
Net Migration:	(65)	-0.22%	29,531	58

One-Call Data	County Value	% of State	State Value	Rank of 64
Incoming Tickets:	911	0.19%	470,716	42
Adjusted Facility Damages:	10	0.31%	3,207	29
Non-Adjusted DIRT Damages:				
Telecommunications	2	0.10%	1,911	
Natural Gas	6	0.78%	768	
Electric	2	0.87%	231	
CableTV	NotReported	0.00%	200	
Water	NotReported	0.00%	40	
Sewer	NotReported	0.00%	17	
Pipeline	NotReported	0.00%	1	
Other	NotReported	0.00%	39	

The *Colorado Damage Prevention Report Card®* provides industry stakeholders in each county with current One-Call ticketing, underground facility damage and demographic information. This information is designed to provide knowledge of damage prevention conditions and programs in the county as well as to help facilitate improvement in public awareness and damage prevention efforts. Accurate and timely information can lead to more effective public awareness and damage prevention programs.

The *Public Awareness Metric* provides a density adjusted measure of tickets versus the population.  
 The *Damage Prevention Metric* provides a measure of adjusted facility damages versus tickets.  
 The *DIRT Reporting Metric* provides a measure DIRT damage reporting by facility type.

# Colorado County Damage Prevention Report Cards - 2009

## 2009 Colorado Damage Prevention Report Card

Colorado Damage Prevention Report Card® is evaluated and published annually by Colorado 811

Reporting Year	<b>2009</b>	
County	<b>Routt</b>	Note: Colorado has 64 Counties

Grading Area	Grade	Score	Rank of 64	Weight
Public Awareness Metric:	C	0.803	27	50%
Damage Prevention Metric:	D	20.581	61	25%
DIRT Reporting Metric:	D-	0.750	47	25%
Stakeholder Participation:	Not Avail 2009	Not Avail 2009	Not Avail 2009	
County Composite Grade:	C-	1.583		

Report Card Metrics				
Demographic Data	County Value	% of State	State Value	Rank of 64
Population:	23,991	0.47%	5,083,221	22
Pop Density per SqMile:	10		49	
Housing Permits:	70	0.75%	9,355	22
Net Migration:	84	0.28%	29,531	31

One-Call Data	County Value	% of State	State Value	Rank of 64
Incoming Tickets:	2,669	0.57%	470,716	23
Adjusted Facility Damages:	68	2.12%	3,207	51
Non-Adjusted DIRT Damages:				
Telecommunications	61	3.19%	1,911	
Natural Gas	NotReported	0.00%	768	
Electric	NotReported	0.00%	231	
CableTV	7	3.50%	200	
Water	NotReported	0.00%	40	
Sewer	NotReported	0.00%	17	
Pipeline	NotReported	0.00%	1	
Other	NotReported	0.00%	39	

The *Colorado Damage Prevention Report Card®* provides industry stakeholders in each county with current One-Call ticketing, underground facility damage and demographic information. This information is designed to provide knowledge of damage prevention conditions and programs in the county as well as to help facilitate improvement in public awareness and damage prevention efforts. Accurate and timely information can lead to more effective public awareness and damage prevention programs.

The *Public Awareness Metric* provides a density adjusted measure of tickets versus the population.  
 The *Damage Prevention Metric* provides a measure of adjusted facility damages versus tickets.  
 The *DIRT Reporting Metric* provides a measure DIRT damage reporting by facility type.

# Colorado County Damage Prevention Report Cards - 2009

# Colorado County Damage Prevention Report Cards - 2009

## 2009 Colorado Damage Prevention Report Card

Colorado Damage Prevention Report Card® is evaluated and published annually by Colorado 811

Reporting Year	<b>2009</b>	
County	<b>Saguache</b>	Note: Colorado has 64 Counties

Grading Area	Grade	Score	Rank of 64	Weight
Public Awareness Metric:	F	0.696	58	50%
Damage Prevention Metric:	B	2.072	16	25%
DIRT Reporting Metric:	D	1.000	40	25%
Stakeholder Participation:	Not Avail 2009	Not Avail 2009	Not Avail 2009	
County Composite Grade:	D+	1.333		

Report Card Metrics				
Demographic Data	County Value	% of State	State Value	Rank of 64
Population:	7,154	0.14%	5,083,221	46
Pop Density per SqMile:	2		49	
Housing Permits:	39	0.42%	9,355	27
Net Migration:	49	0.17%	29,531	32

One-Call Data	County Value	% of State	State Value	Rank of 64
Incoming Tickets:	451	0.10%	470,716	51
Adjusted Facility Damages:	1	0.03%	3,207	3
Non-Adjusted DIRT Damages:				
Telecommunications	NotReported	0.00%	1,911	
Natural Gas	1	0.13%	768	
Electric	NotReported	0.00%	231	
CableTV	NotReported	0.00%	200	
Water	NotReported	0.00%	40	
Sewer	NotReported	0.00%	17	
Pipeline	NotReported	0.00%	1	
Other	NotReported	0.00%	39	

The *Colorado Damage Prevention Report Card®* provides industry stakeholders in each county with current One-Call ticketing, underground facility damage and demographic information. This information is designed to provide knowledge of damage prevention conditions and programs in the county as well as to help facilitate improvement in public awareness and damage prevention efforts. Accurate and timely information can lead to more effective public awareness and damage prevention programs.

The *Public Awareness Metric* provides a density adjusted measure of tickets versus the population.  
 The *Damage Prevention Metric* provides a measure of adjusted facility damages versus tickets.  
 The *DIRT Reporting Metric* provides a measure DIRT damage reporting by facility type.

# Colorado County Damage Prevention Report Cards - 2009

## 2009 Colorado Damage Prevention Report Card

Colorado Damage Prevention Report Card® is evaluated and published annually by Colorado 811

Reporting Year	<b>2009</b>	Note: Colorado has 64 Counties
County	<b>San Juan</b>	

Grading Area	Grade	Score	Rank of 64	Weight
Public Awareness Metric:	F	0.578	64	50%
Damage Prevention Metric:	D	25.434	63	25%
DIRT Reporting Metric:	F	0.375	50	25%
Stakeholder Participation:	Not Avail 2009	Not Avail 2009	Not Avail 2009	
County Composite Grade:	D-	0.667		

Report Card Metrics				
Demographic Data	County Value	% of State	State Value	Rank of 64
Population:	574	0.01%	5,083,221	64
Pop Density per SqMile:	1		49	
Housing Permits:	4	0.04%	9,355	53
Net Migration:	3	0.01%	29,531	46

One-Call Data	County Value	% of State	State Value	Rank of 64
Incoming Tickets:	38	0.01%	470,716	64
Adjusted Facility Damages:	1	0.03%	3,207	3
Non-Adjusted DIRT Damages:				
Telecommunications	1	0.05%	1,911	
Natural Gas	NotReported	0.00%	768	
Electric	NotReported	0.00%	231	
CableTV	NotReported	0.00%	200	
Water	NotReported	0.00%	40	
Sewer	NotReported	0.00%	17	
Pipeline	NotReported	0.00%	1	
Other	NotReported	0.00%	39	

The *Colorado Damage Prevention Report Card®* provides industry stakeholders in each county with current One-Call ticketing, underground facility damage and demographic information. This information is designed to provide knowledge of damage prevention conditions and programs in the county as well as to help facilitate improvement in public awareness and damage prevention efforts. Accurate and timely information can lead to more effective public awareness and damage prevention programs.

The *Public Awareness Metric* provides a density adjusted measure of tickets versus the population.  
 The *Damage Prevention Metric* provides a measure of adjusted facility damages versus tickets.  
 The *DIRT Reporting Metric* provides a measure DIRT damage reporting by facility type.



# Colorado County Damage Prevention Report Cards - 2009

## 2009 Colorado Damage Prevention Report Card

Colorado Damage Prevention Report Card® is evaluated and published annually by Colorado 811

Reporting Year	<b>2009</b>	
County	<b>San Miguel</b>	Note: Colorado has 64 Counties

Grading Area	Grade	Score	Rank of 64	Weight
Public Awareness Metric:	C	0.796	31	50%
Damage Prevention Metric:	C-	8.625	43	25%
DIRT Reporting Metric:	D+	1.375	27	25%
Stakeholder Participation:	Not Avail 2009	Not Avail 2009	Not Avail 2009	
County Composite Grade:	C	1.917		

Report Card Metrics				
Demographic Data	County Value	% of State	State Value	Rank of 64
Population:	7,957	0.16%	5,083,221	44
Pop Density per SqMile:	6		49	
Housing Permits:	44	0.47%	9,355	25
Net Migration:	99	0.34%	29,531	29

One-Call Data	County Value	% of State	State Value	Rank of 64
Incoming Tickets:	1,086	0.23%	470,716	38
Adjusted Facility Damages:	11	0.34%	3,207	30
Non-Adjusted DIRT Damages:				
Telecommunications	1	0.05%	1,911	
Natural Gas	10	1.30%	768	
Electric	NotReported	0.00%	231	
CableTV	NotReported	0.00%	200	
Water	NotReported	0.00%	40	
Sewer	NotReported	0.00%	17	
Pipeline	NotReported	0.00%	1	
Other	NotReported	0.00%	39	

The *Colorado Damage Prevention Report Card®* provides industry stakeholders in each county with current One-Call ticketing, underground facility damage and demographic information. This information is designed to provide knowledge of damage prevention conditions and programs in the county as well as to help facilitate improvement in public awareness and damage prevention efforts. Accurate and timely information can lead to more effective public awareness and damage prevention programs.

The *Public Awareness Metric* provides a density adjusted measure of tickets versus the population.  
 The *Damage Prevention Metric* provides a measure of adjusted facility damages versus tickets.  
 The *DIRT Reporting Metric* provides a measure DIRT damage reporting by facility type.

# Colorado County Damage Prevention Report Cards - 2009

## 2009 Colorado Damage Prevention Report Card

Colorado Damage Prevention Report Card® is evaluated and published annually by Colorado 811

Reporting Year	<b>2009</b>	Note: Colorado has 64 Counties
County	<b>Sedgwick</b>	

Grading Area	Grade	Score	Rank of 64	Weight
Public Awareness Metric:	D	0.723	55	50%
Damage Prevention Metric:	C+	3.434	26	25%
DIRT Reporting Metric:	D	1.000	40	25%
Stakeholder Participation:	Not Avail 2009	Not Avail 2009	Not Avail 2009	
County Composite Grade:	C-	1.500		

Report Card Metrics				
Demographic Data	County Value	% of State	State Value	Rank of 64
Population:	2,555	0.05%	5,083,221	57
Pop Density per SqMile:	5		49	
Housing Permits:	1	0.01%	9,355	56
Net Migration:	25	0.08%	29,531	38

One-Call Data	County Value	% of State	State Value	Rank of 64
Incoming Tickets:	255	0.05%	470,716	56
Adjusted Facility Damages:	1	0.03%	3,207	3
Non-Adjusted DIRT Damages:				
Telecommunications	NotReported	0.00%	1,911	
Natural Gas	1	0.13%	768	
Electric	NotReported	0.00%	231	
CableTV	NotReported	0.00%	200	
Water	NotReported	0.00%	40	
Sewer	NotReported	0.00%	17	
Pipeline	NotReported	0.00%	1	
Other	NotReported	0.00%	39	

The *Colorado Damage Prevention Report Card®* provides industry stakeholders in each county with current One-Call ticketing, underground facility damage and demographic information. This information is designed to provide knowledge of damage prevention conditions and programs in the county as well as to help facilitate improvement in public awareness and damage prevention efforts. Accurate and timely information can lead to more effective public awareness and damage prevention programs.

The *Public Awareness Metric* provides a density adjusted measure of tickets versus the population.  
 The *Damage Prevention Metric* provides a measure of adjusted facility damages versus tickets.  
 The *DIRT Reporting Metric* provides a measure DIRT damage reporting by facility type.

# Colorado County Damage Prevention Report Cards - 2009

## 2009 Colorado Damage Prevention Report Card

Colorado Damage Prevention Report Card® is evaluated and published annually by Colorado 811

Reporting Year	<b>2009</b>	
County	<b>Summit</b>	Note: Colorado has 64 Counties

Grading Area	Grade	Score	Rank of 64	Weight
Public Awareness Metric:	B-	0.857	12	50%
Damage Prevention Metric:	C	7.810	40	25%
DIRT Reporting Metric:	B-	2.750	10	25%
Stakeholder Participation:	Not Avail 2009	Not Avail 2009	Not Avail 2009	
County Composite Grade:	B-	2.667		

Report Card Metrics				
Demographic Data	County Value	% of State	State Value	Rank of 64
Population:	29,460	0.58%	5,083,221	19
Pop Density per SqMile:	48		49	
Housing Permits:	78	0.83%	9,355	19
Net Migration:	9	0.03%	29,531	43

One-Call Data	County Value	% of State	State Value	Rank of 64
Incoming Tickets:	4,580	0.97%	470,716	16
Adjusted Facility Damages:	53	1.65%	3,207	47
Non-Adjusted DIRT Damages:				
Telecommunications	41	2.15%	1,911	
Natural Gas	9	1.17%	768	
Electric	2	0.87%	231	
CableTV	1	0.50%	200	
Water	NotReported	0.00%	40	
Sewer	NotReported	0.00%	17	
Pipeline	NotReported	0.00%	1	
Other	NotReported	0.00%	39	

The *Colorado Damage Prevention Report Card®* provides industry stakeholders in each county with current One-Call ticketing, underground facility damage and demographic information. This information is designed to provide knowledge of damage prevention conditions and programs in the county as well as to help facilitate improvement in public awareness and damage prevention efforts. Accurate and timely information can lead to more effective public awareness and damage prevention programs.

The *Public Awareness Metric* provides a density adjusted measure of tickets versus the population.  
 The *Damage Prevention Metric* provides a measure of adjusted facility damages versus tickets.  
 The *DIRT Reporting Metric* provides a measure DIRT damage reporting by facility type.

# Colorado County Damage Prevention Report Cards - 2009

## 2009 Colorado Damage Prevention Report Card

Colorado Damage Prevention Report Card® is evaluated and published annually by Colorado 811

Reporting Year	<b>2009</b>	Note: Colorado has 64 Counties
County	<b>Teller</b>	

Grading Area	Grade	Score	Rank of 64	Weight
Public Awareness Metric:	A	0.919	1	50%
Damage Prevention Metric:	B	1.777	10	25%
DIRT Reporting Metric:	D+	1.375	27	25%
Stakeholder Participation:	Not Avail 2009	Not Avail 2009	Not Avail 2009	
County Composite Grade:	B	3.083		

Report Card Metrics				
Demographic Data	County Value	% of State	State Value	Rank of 64
Population:	22,738	0.45%	5,083,221	24
Pop Density per SqMile:	41		49	
Housing Permits:	36	0.38%	9,355	29
Net Migration:	(129)	-0.44%	29,531	63

One-Call Data	County Value	% of State	State Value	Rank of 64
Incoming Tickets:	6,969	1.48%	470,716	14
Adjusted Facility Damages:	18	0.56%	3,207	37
Non-Adjusted DIRT Damages:				
Telecommunications	17	0.89%	1,911	
Natural Gas	1	0.13%	768	
Electric	NotReported	0.00%	231	
CableTV	NotReported	0.00%	200	
Water	NotReported	0.00%	40	
Sewer	NotReported	0.00%	17	
Pipeline	NotReported	0.00%	1	
Other	NotReported	0.00%	39	

The *Colorado Damage Prevention Report Card®* provides industry stakeholders in each county with current One-Call ticketing, underground facility damage and demographic information. This information is designed to provide knowledge of damage prevention conditions and programs in the county as well as to help facilitate improvement in public awareness and damage prevention efforts. Accurate and timely information can lead to more effective public awareness and damage prevention programs.

The *Public Awareness Metric* provides a density adjusted measure of tickets versus the population.  
 The *Damage Prevention Metric* provides a measure of adjusted facility damages versus tickets.  
 The *DIRT Reporting Metric* provides a measure DIRT damage reporting by facility type.

# Colorado County Damage Prevention Report Cards - 2009

## 2009 Colorado Damage Prevention Report Card

Colorado Damage Prevention Report Card® is evaluated and published annually by Colorado 811

Reporting Year	<b>2009</b>	
County	<b>Washington</b>	Note: Colorado has 64 Counties

Grading Area	Grade	Score	Rank of 64	Weight
Public Awareness Metric:	D+	0.741	50	50%
Damage Prevention Metric:	A+	0.000	1	25%
DIRT Reporting Metric:	A	4.000	3	25%
Stakeholder Participation:	Not Avail 2009	Not Avail 2009	Not Avail 2009	
County Composite Grade:	B-	2.708		

Report Card Metrics				
Demographic Data	County Value	% of State	State Value	Rank of 64
Population:	4,743	0.09%	5,083,221	52
Pop Density per SqMile:	2		49	
Housing Permits:	7	0.07%	9,355	47
Net Migration:	10	0.03%	29,531	42

One-Call Data	County Value	% of State	State Value	Rank of 64
Incoming Tickets:	503	0.11%	470,716	48
Adjusted Facility Damages:	NoDamages	0.00%	3,207	1
Non-Adjusted DIRT Damages:				
Telecommunications	NotReported	0.00%	1,911	
Natural Gas	NotReported	0.00%	768	
Electric	NotReported	0.00%	231	
CableTV	NotReported	0.00%	200	
Water	NotReported	0.00%	40	
Sewer	NotReported	0.00%	17	
Pipeline	NotReported	0.00%	1	
Other	NotReported	0.00%	39	

The *Colorado Damage Prevention Report Card®* provides industry stakeholders in each county with current One-Call ticketing, underground facility damage and demographic information. This information is designed to provide knowledge of damage prevention conditions and programs in the county as well as to help facilitate improvement in public awareness and damage prevention efforts. Accurate and timely information can lead to more effective public awareness and damage prevention programs.

The *Public Awareness Metric* provides a density adjusted measure of tickets versus the population.  
 The *Damage Prevention Metric* provides a measure of adjusted facility damages versus tickets.  
 The *DIRT Reporting Metric* provides a measure DIRT damage reporting by facility type.

# Colorado County Damage Prevention Report Cards - 2009

## 2009 Colorado Damage Prevention Report Card

Colorado Damage Prevention Report Card® is evaluated and published annually by Colorado 811

Reporting Year	<b>2009</b>	Note: Colorado has 64 Counties
County	<b>Weld</b>	

Grading Area	Grade	Score	Rank of 64	Weight
Public Awareness Metric:	A-	0.878	4	50%
Damage Prevention Metric:	C+	3.773	28	25%
DIRT Reporting Metric:	A+	4.250	1	25%
Stakeholder Participation:	Not Avail 2009	Not Avail 2009	Not Avail 2009	
County Composite Grade:	B+	3.458		

Report Card Metrics				
Demographic Data	County Value	% of State	State Value	Rank of 64
Population:	256,982	5.06%	5,083,221	9
Pop Density per SqMile:	64		49	
Housing Permits:	761	8.13%	9,355	5
Net Migration:	2,996	10.15%	29,531	4

One-Call Data	County Value	% of State	State Value	Rank of 64
Incoming Tickets:	36,576	7.77%	470,716	5
Adjusted Facility Damages:	212	6.61%	3,207	63
Non-Adjusted DIRT Damages:				
Telecommunications	136	7.12%	1,911	
Natural Gas	48	6.25%	768	
Electric	4	1.73%	231	
CableTV	5	2.50%	200	
Water	2	5.00%	40	
Sewer	2	11.76%	17	
Pipeline	NotReported	0.00%	1	
Other	15	38.46%	39	

The *Colorado Damage Prevention Report Card®* provides industry stakeholders in each county with current One-Call ticketing, underground facility damage and demographic information. This information is designed to provide knowledge of damage prevention conditions and programs in the county as well as to help facilitate improvement in public awareness and damage prevention efforts. Accurate and timely information can lead to more effective public awareness and damage prevention programs.

The *Public Awareness Metric* provides a density adjusted measure of tickets versus the population.  
 The *Damage Prevention Metric* provides a measure of adjusted facility damages versus tickets.  
 The *DIRT Reporting Metric* provides a measure DIRT damage reporting by facility type.

# Colorado County Damage Prevention Report Cards - 2009

## 2009 Colorado Damage Prevention Report Card

Colorado Damage Prevention Report Card® is evaluated and published annually by Colorado 811

Reporting Year	<b>2009</b>	Note: Colorado has 64 Counties
County	<b>Yuma</b>	

Grading Area	Grade	Score	Rank of 64	Weight
Public Awareness Metric:	C+	0.831	21	50%
Damage Prevention Metric:	A-	0.952	6	25%
DIRT Reporting Metric:	D+	1.375	27	25%
Stakeholder Participation:	Not Avail 2009	Not Avail 2009	Not Avail 2009	
County Composite Grade:	B-	2.542		

Report Card Metrics				
Demographic Data	County Value	% of State	State Value	Rank of 64
Population:	10,003	0.20%	5,083,221	38
Pop Density per SqMile:	4		49	
Housing Permits:	0	0.00%	9,355	62
Net Migration:	(52)	-0.18%	29,531	56

One-Call Data	County Value	% of State	State Value	Rank of 64
Incoming Tickets:	1,857	0.39%	470,716	31
Adjusted Facility Damages:	2	0.06%	3,207	15
Non-Adjusted DIRT Damages:				
Telecommunications	1	0.05%	1,911	
Natural Gas	1	0.13%	768	
Electric	NotReported	0.00%	231	
CableTV	NotReported	0.00%	200	
Water	NotReported	0.00%	40	
Sewer	NotReported	0.00%	17	
Pipeline	NotReported	0.00%	1	
Other	NotReported	0.00%	39	

The *Colorado Damage Prevention Report Card®* provides industry stakeholders in each county with current One-Call ticketing, underground facility damage and demographic information. This information is designed to provide knowledge of damage prevention conditions and programs in the county as well as to help facilitate improvement in public awareness and damage prevention efforts. Accurate and timely information can lead to more effective public awareness and damage prevention programs.

The *Public Awareness Metric* provides a density adjusted measure of tickets versus the population.  
 The *Damage Prevention Metric* provides a measure of adjusted facility damages versus tickets.  
 The *DIRT Reporting Metric* provides a measure DIRT damage reporting by facility type.